

**New Jersey Department of Health and Senior Services**  
**Communicable Disease Service**  
**Influenza Activity Summary**  
**Week Ending January 13, 2007 (MMWR Week 2)**

**Influenza activity level:**    **LOCAL**

No Activity- At least 2 of 3 parameters at or below state baseline **AND** no lab confirmed cases

Sporadic – At least 2 of 3 parameters above state baseline **AND** confirmed laboratory cases anywhere in the state within previous 3 weeks **OR** at least one laboratory confirmed outbreak in an institution anywhere in the state

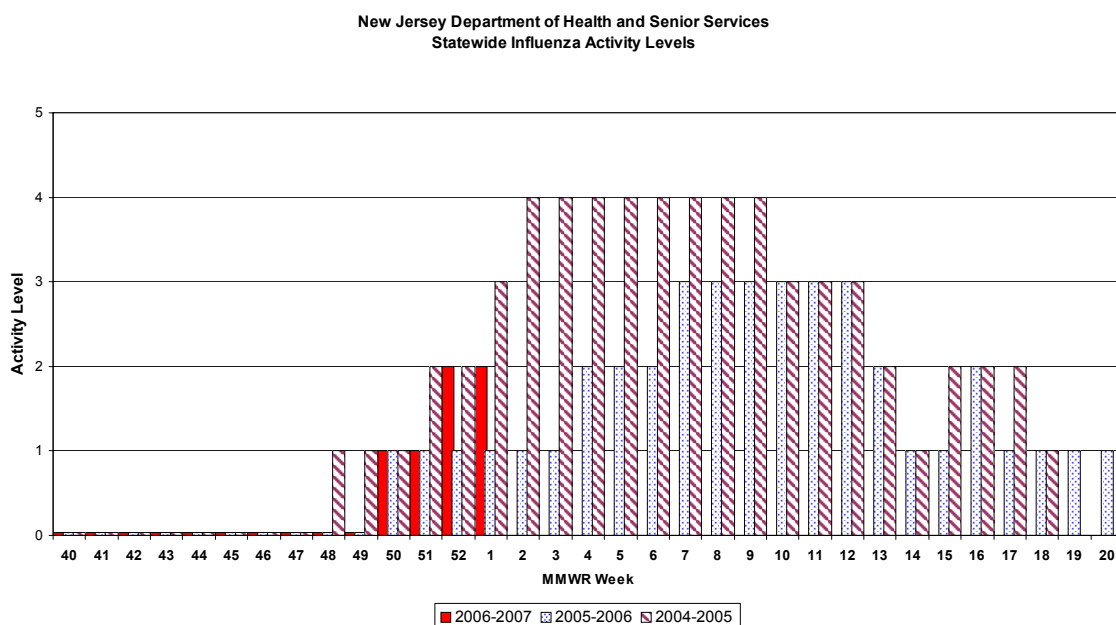
Local – At least 2 of 3 parameters above state baseline in a single county **AND** confirmed laboratory cases from that same county within the previous 3 weeks (other counties may be above baseline without lab confirmed cases) **OR** confirmed outbreaks in 2 or more institutions in a single county

Regional – At least 2 of 3 parameters above state baseline in  $\geq 2$  but  $\leq 10$  counties **AND** laboratory confirmed cases from these same counties in past 3 weeks **OR** confirmed outbreaks institutions in  $\geq 2$  but  $\leq 10$  counties

Widespread – At least 2 of 3 parameters above state baseline in  $> 10$  counties **OR** institutional outbreaks in  $> 10$  counties **AND** lab confirmed influenza cases in previous 3 weeks.

Parameter = School, emergency department, or long term care weekly surveillance data

Baseline is calculated by taking the average of statewide percentages of ILI for a 3 year (2004, 2005, 2006) period during months when influenza is less likely to be circulating (May-August). Weeks in which less than 4 counties reported were not included in the calculation.



## **Regional Data**

### **SPORADIC ACTIVITY NORTHWEST REGION NO ACTIVITY IN CW, NE, CE AND SOUTH PUBLIC HEALTH REGION**

**NOTE:** One specimen from the NW public health region tested positive for influenza B by viral isolation. Two of three parameters for this region were above the state baseline. Therefore, this region is listed as having sporadic activity.

#### Public Health Regions

NW Region (Morris, Passaic, Sussex, Warren)

NE Region (Bergen, Essex, Hudson)

CW Region (Hunterdon, Mercer, Somerset)

CE Region (Middlesex, Monmouth, Ocean, Union)

South Region (Atlantic, Burlington, Camden, Cape May, Cumberland, Gloucester, Salem)

No Activity- At least 2 of 3 parameters at or below state baseline **AND** no lab confirmed cases in the public health region

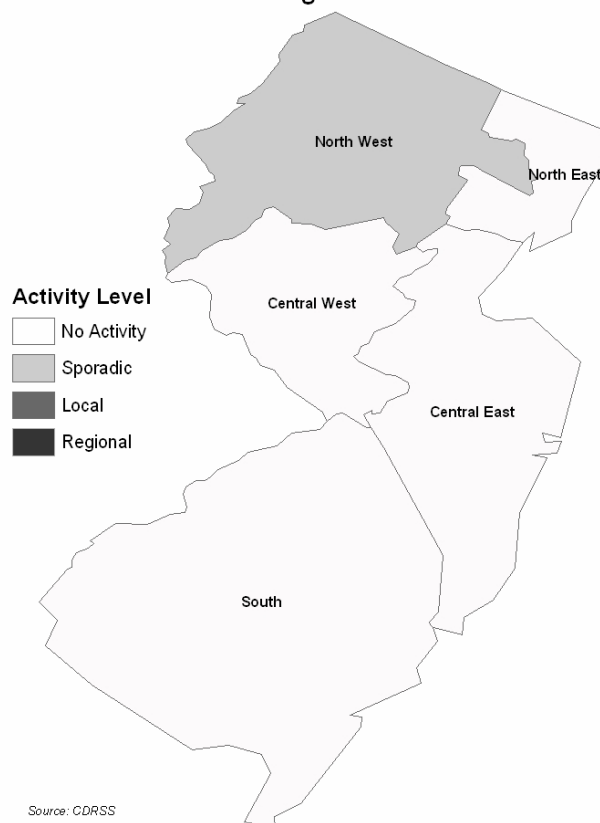
Sporadic – At least 2 of 3 parameters above state baseline **AND** confirmed laboratory cases anywhere in the public health region **OR** at least one laboratory confirmed outbreak in an institution anywhere in the public health region

Local – At least 2 or 3 parameters above state baseline in a single county of a public health region **AND** confirmed laboratory cases from that same county within the previous 3 weeks (other counties may be above baseline without lab confirmed cases) **OR** confirmed outbreaks in 2 or more institutions in a single county of a public health region

Regional – At least 2 of 3 parameters above state baseline in at least half of counties of public health region **AND** laboratory confirmed cases from these same counties in past 3 weeks **OR** confirmed outbreaks institutions in at least half of counties of public health region counties

Widespread – Not used for public health region data

**Public Health Region Influenza Data**



## Laboratory Surveillance

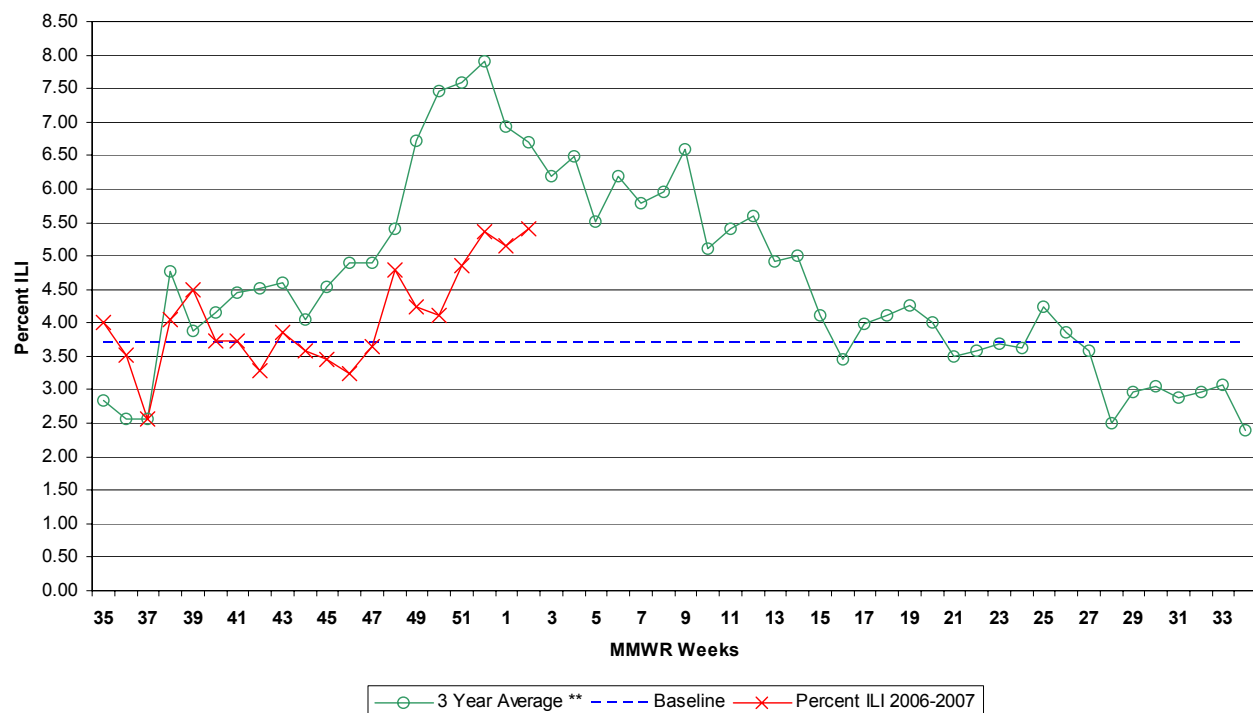
During week 2, one sample was positive for influenza B by viral isolation from the northwest region. In addition to this sample, one influenza A H1 was identified in week 51 and one influenza B in week 1.

## Influenza-like Illness (ILI) Surveillance\*

### **Emergency Departments**

During week 2, 5.41% ILI was reported statewide from emergency departments. This is an increase over the previous week (5.16%). The percent ILI for each county ranged from 0.00 to 13.33%. The percent ILI for this same week last year was 5.43% in emergency departments. The percent ILI for the northeast (7.96%), north west (4.18%), and the central east (7.25%) public health regions were above state baseline (3.71%).

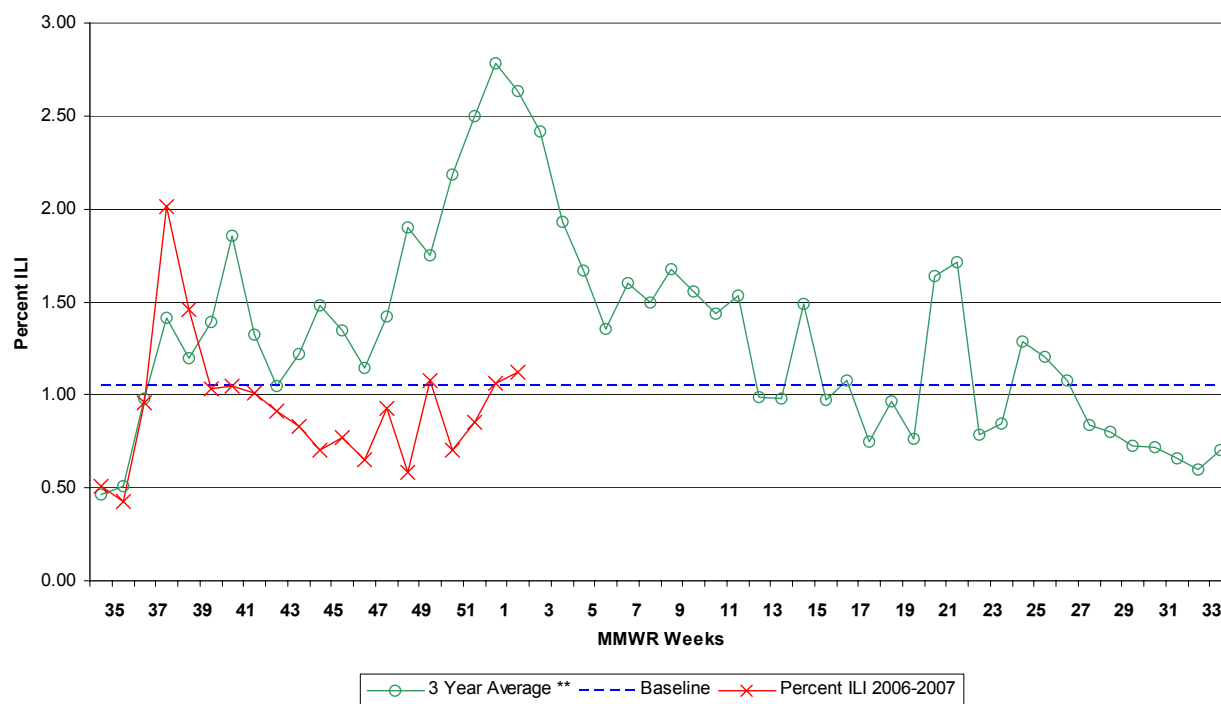
**New Jersey Department of Health and Senior Services  
Influenza-like Activity - Emergency Departments**



## Long-term Care Facilities

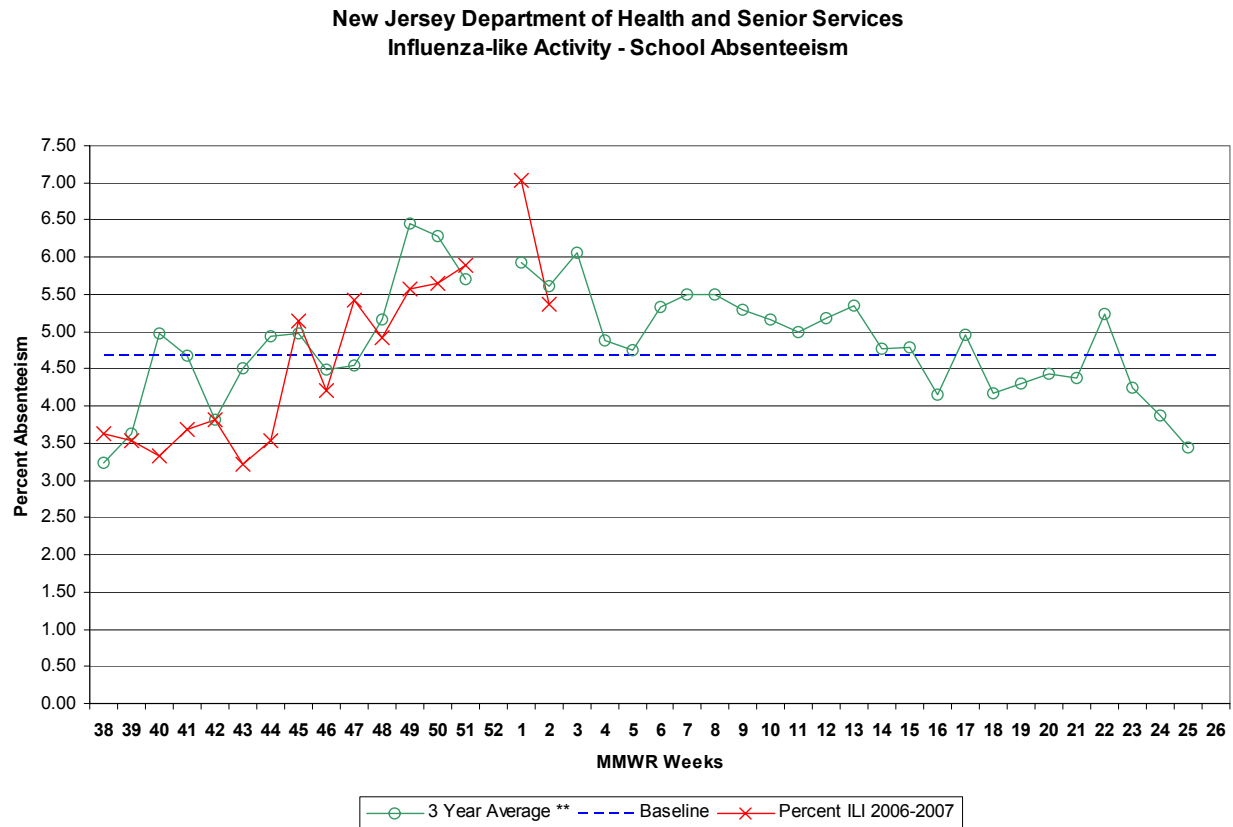
During week 2, 1.12% ILI was reported statewide from long term care facilities. This is an increase over the previous week (1.06%). The percent ILI for each county ranged from 0.00% to 3.10%. No reports regarding ILI/respiratory outbreaks in communal living facilities were received. The percent ILI for this same week last year was 1.31% in long-term care facilities. The percent ILI for the northwest (1.14), northeast (1.51%) and the south (1.27%) public health region was above state baseline (1.05%).

**New Jersey Department of Health and Senior Services**  
**Influenza-like Activity - Long Term Care Facilities**



## School Absenteeism

During week 2, schools reported 5.37% absenteeism. This is a decrease over the previous week (7.04%). The percent ILI for each county ranged from 2.27- 7.84%. The percent absent for this same week last year was 5.97%. The percent ILI for the northwest (6.16%), the northeast (6.12%), the central east (5.36%) and the south (5.34%) public health regions were above state baseline (4.68%).



## **Sentinel Provider Surveillance**

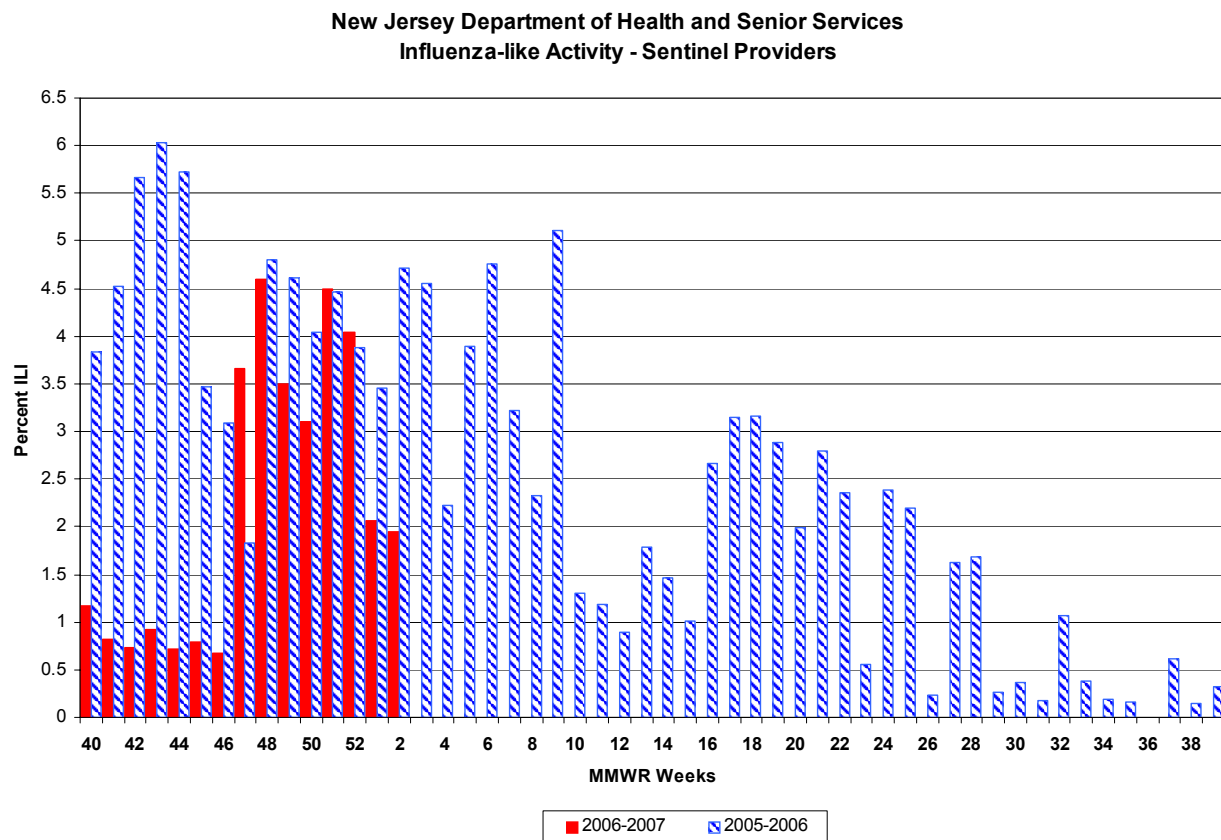
During week 2, 1.94% of sentinel provider patient visits were due to ILI. These data reflect reports from seven (16%) of the enrolled sentinel providers.

**UPDATE (Note: Several other additions to this data were made. Please refer to the chart for information beyond what is listed in the text.)**

During week 1, 2.06% of sentinel provider patient visits were due to ILI. These data reflect reports from sixteen (36%) of the enrolled sentinel providers.

During week 52, 4.04% of sentinel provider patient visits were due to ILI. These data reflect reports from fourteen (32%) of the enrolled sentinel providers.

During week 51, 4.49% of sentinel provider patient visits were due to ILI. These data reflect reports from seventeen (39%) of the enrolled sentinel providers.



## **Pediatric Influenza Surveillance**

To date, NJDHSS has received 23 reports of pediatric illness. To date, three cases have met the case definition for pediatric illness or death associated with influenza.

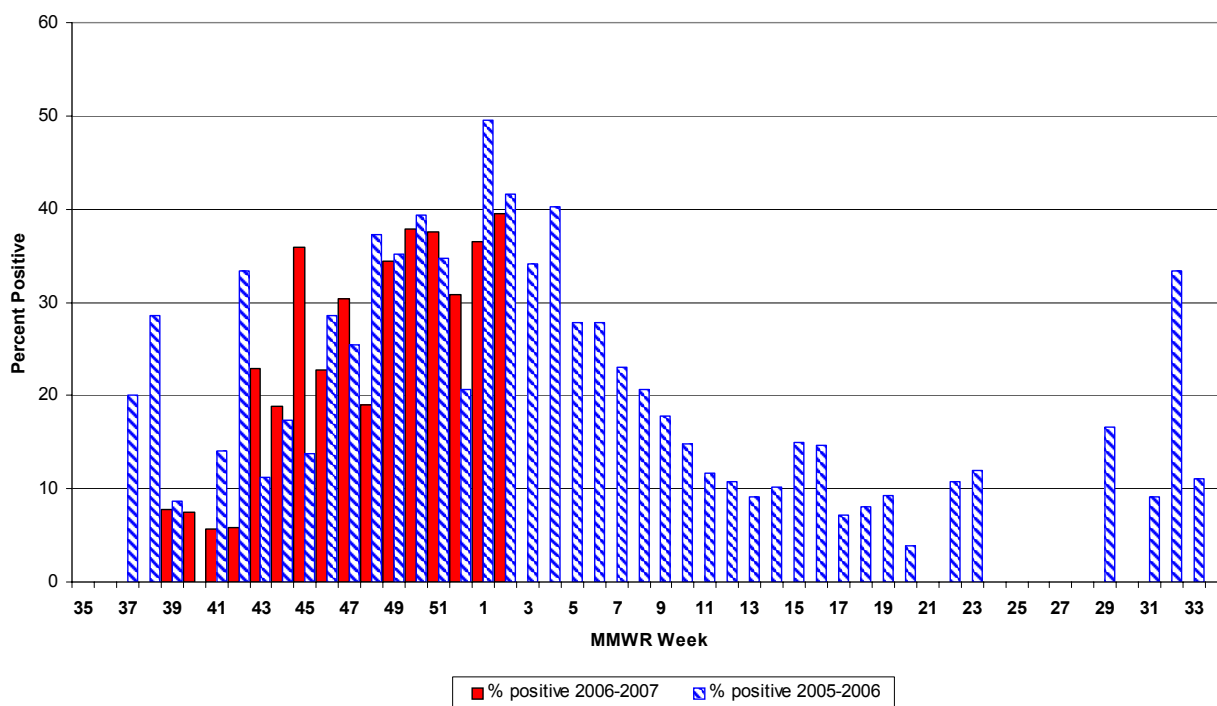
## **122 City Mortality Report**

During week 1, 3.70% of all deaths reported by the vital statistics offices in 6 New Jersey cities (i.e., Camden, Elizabeth, Jersey City, Newark, Paterson, Trenton) were due to pneumonia or influenza. This was a decrease over the previous week (5.26%). The percentage of death due to pneumonia or influenza for this same week last year was 6.67%.

## **RSV Reports**

During week 2, 39.43% of all RSV samples tested were positive. This was an increase over the previous week 36.53%. The percent of samples positive RSV for this same week last year was 41.56%.

**New Jersey Department of Health and Senior Services  
Respiratory Syncytial Virus (RSV) Surveillance by Week**



## **Additional Information**

For additional information regarding influenza surveillance please visit the following websites.

<http://nj.gov/health/flu/surveillance.shtml>

<http://www.cdc.gov/flu/>

\* Baseline is calculated by taking the average of statewide percentages of ILI for a 3 year (2004, 2005, 2006) period during months when influenza is less likely to be circulating (May-August). Weeks in which less than 4 counties reported were not included in the calculation.

\*\*Three year average is an average of the 2003-2004, 2004-2005, and 2005-2006 influenza seasons.

	Long Term Care			Schools			Hospital Emergency Department			RSV Tests	
County	# Enrolled	# Reports Rec'd	% ILI	# Enrolled	# Reports Rec'd	% Absent	# Enrolled	# Reports Rec'd	% ILI	# Positive	Total Tests Performed
ATLANTIC	5	3	1.03	16	15	6.93	4	4	1.90	17	41
BERGEN	3	0	0.00	11	0	0.00	6	0	0.00	0	0
BURLINGTON	5	4	0.00	103	68	4.58	3	2	2.54	20	48
CAMDEN	7	3	1.09	17	5	4.96	7	5	1.22	0	0
CAPE MAY	4	4	3.10	11	11	5.62	1	1	12.05	3	14
CUMBERLAND	4	2	2.35	18	10	7.84	3	3	7.06	4	17
ESSEX	14	6	1.63	31	13	5.95	11	8	8.59	67	165
GLOUCESTER	2	1	0.00	4	3	2.42	2	2	0.94	7	10
HUDSON	10	3	1.30	75	43	6.16	7	3	5.02	12	34
HUNTERDON	4	4	0.00	8	8	3.63	1	1	0.00	7	12
MERCER	10	4	0.51	12	11	4.04	5	2	2.48	4	8
MIDDLESEX	2	1	2.04	3	1	2.27	5	2	13.33	21	51
MONMOUTH	5	1	0.00	24	16	7.37	5	4	2.09	10	24
MORRIS	11	4	0.67	14	14	3.13	4	4	1.98	7	22
OCEAN	6	4	1.32	17	10	6.48	4	4	11.68	0	0
PASSAIC	8	3	1.75	22	3	5.52	6	0	0.00	0	0
SALEM	4	3	0.00	5	0	0.00	1	1	1.49	0	0
SOMERSET	5	4	1.32	52	25	3.14	2	1	5.49	0	0
SUSSEX	5	5	1.59	18	18	6.81	2	2	6.12	7	21
UNION	4	2	0.00	78	51	4.65	5	5	4.83	7	19
UNKNOWN	0	0	0.00	2	0	0.00	0	0	0.00	0	0
WARREN	7	6	0.93	21	21	8.05	2	2	10.87	1	6
<b>NW Region</b>	31	18	1.14	75	56	6.16	14	8	4.18	15	49
<b>NE Region</b>	27	9	1.51	117	56	6.12	24	11	7.96	79	199
<b>CW Region</b>	19	12	0.61	72	44	3.50	8	4	2.68	11	20
<b>CE Region</b>	17	8	0.71	122	78	5.36	19	15	7.25	38	94
<b>South Region</b>	31	20	1.27	174	112	5.34	21	18	2.77	51	130
<b>State Total</b>	<b>125</b>	<b>67</b>	<b>1.12</b>	<b>560</b>	<b>346</b>	<b>5.37</b>	<b>86</b>	<b>56</b>	<b>5.41</b>	<b>194</b>	<b>492</b>