

**New Jersey Department of Health and Senior Services**  
**Communicable Disease Service**  
**Influenza Activity Summary**  
**Week Ending December 19, 2007 (MMWR Week 51)**

**Influenza Activity Level:**    **LOCAL**

**NOTE:** Three of three reporting parameters are above state baseline. Additionally, one county had 2 of 3 parameters above baseline as well as laboratory confirmed cases in the previous 3 weeks.

**No Activity** - At least 2 of 3 parameters at or below state baseline **AND** no lab confirmed cases

**Sporadic** - At least 2 of 3 parameters above state baseline **AND** confirmed laboratory cases anywhere in the state within previous 3 weeks **OR** at least one laboratory confirmed outbreak in an institution anywhere in the state

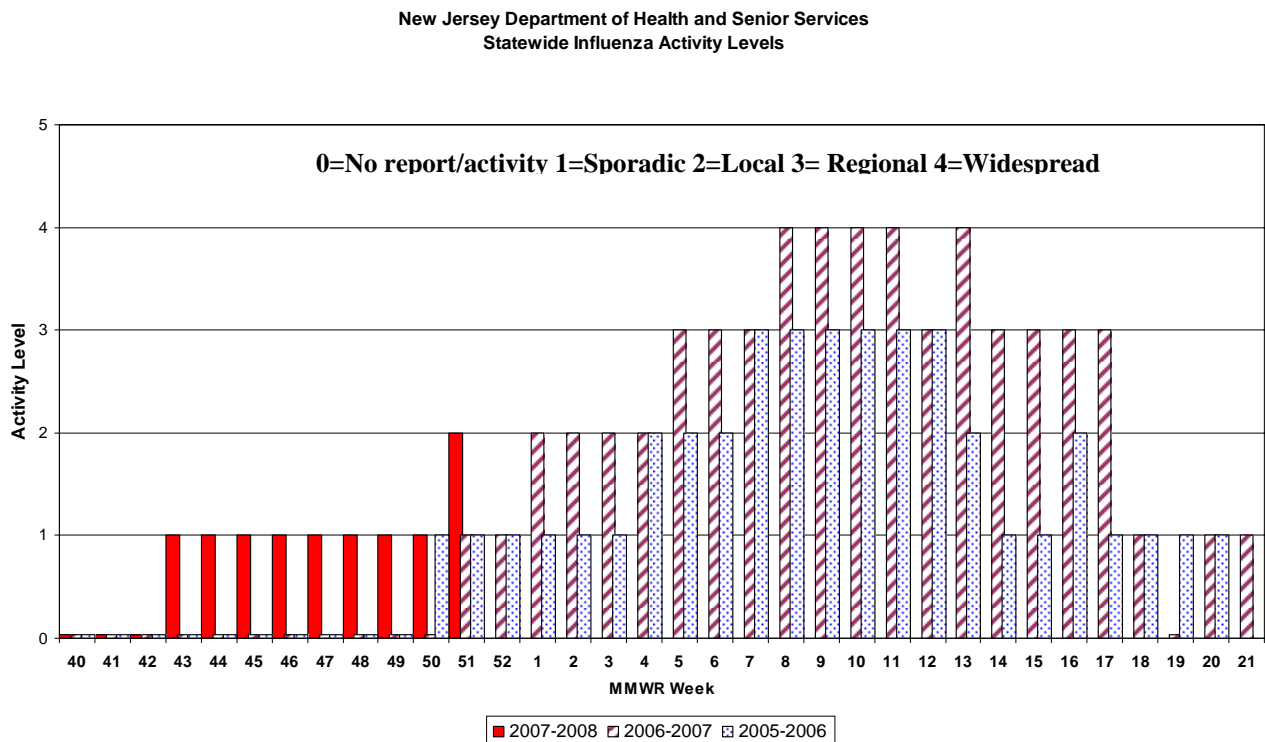
**Local** - At least 2 or 3 parameters above state baseline in a single county **AND** confirmed laboratory cases from that same county within the previous 3 weeks (other counties may be above baseline without lab confirmed cases) **OR** confirmed outbreaks in 2 or more institutions in a single county

**Regional** - At least 2 of 3 parameters above state baseline in  $\geq 2$  but  $\leq 10$  counties **AND** laboratory confirmed cases from these same counties in past 3 weeks **OR** confirmed outbreaks institutions in  $\geq 2$  but  $\leq 10$  counties

**Widespread** - At least 2 of 3 parameters above state baseline in  $> 10$  counties **OR** institutional outbreaks in  $> 10$  counties **AND** lab confirmed influenza cases in previous 3 weeks.

Parameter = School, emergency department, or long term care weekly surveillance data

Baseline is calculated by taking the average of statewide percentages of ILI for a 4 year (2004, 2005, 2006, 2007) period during months when influenza is less likely to be circulating (May-August). Weeks in which less than 4 counties reported were not included in the calculation.



## **Regional Data**

**LOCAL - CE**

**SPORADIC – NW, NE, CW**

**NO ACTIVITY – South**

**NOTE:** The CE public health region was above baseline and had laboratory confirmed influenza from a single county. Rapid or culture influenza positive tests were received from the NE, NW and CW public health regions in the previous 3 weeks along with 2 of 3 parameters above baseline.

### Public Health Regions

NW Region (Morris, Passaic, Sussex, Warren)

NE Region (Bergen, Essex, Hudson)

CW Region (Hunterdon, Mercer, Somerset)

CE Region (Middlesex, Monmouth, Ocean, Union)

South Region (Atlantic, Burlington, Camden, Cape May, Cumberland, Gloucester, Salem)

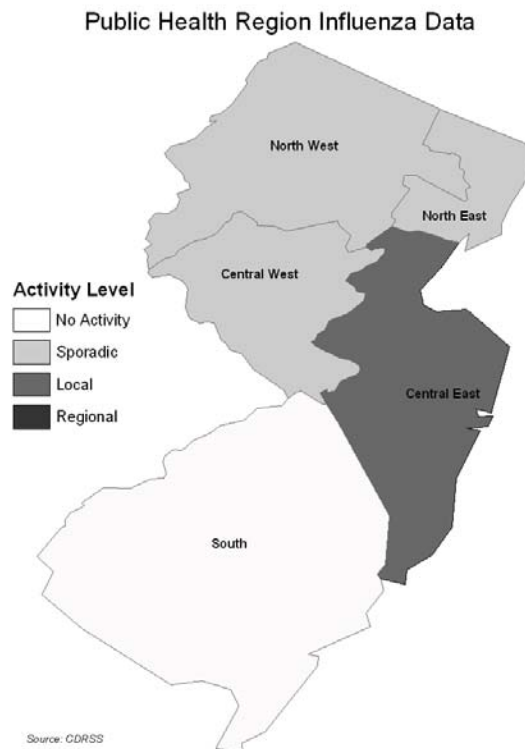
No Activity- At least 2 of 3 parameters at or below state baseline **AND** no lab confirmed cases in the public health region

Sporadic – At least 2 of 3 parameters above state baseline **AND** confirmed laboratory cases anywhere in the public health region **OR** at least one laboratory confirmed outbreak in an institution anywhere in the public health region

Local – At least 2 or 3 parameters above state baseline in a single county of a public health region **AND** confirmed laboratory cases from that same county within the previous 3 weeks (other counties may be above baseline without lab confirmed cases) **OR** confirmed outbreaks in 2 or more institutions in a single county of a public health region

Regional – At least 2 of 3 parameters above state baseline in at least half of counties of public health region **AND** laboratory confirmed cases from these same counties in past 3 weeks **OR** confirmed outbreaks institutions in at least half of counties of public health region counties

Widespread – Not used for public health region data



## Laboratory Surveillance

As of week 51, 10 samples have been found to be positive by viral culture (4- AH1, 1-AH3 and 5-B). Rapid and culture results by county are displayed below.

County	Week 40 to Week 51							Weeks 49, 50, 51						
	Rapid*			Culture*				Rapid*			Culture*			
	A	B	A/B	A H1	A H3	A UNK	B	A	B	A/B	A H1	A H3	A UNK	B
Atlantic County														
Bergen County	1			3			1	1			2			3
Burlington County	4							2						
Camden County														
Cape May County														
Cumberland County														
Essex County	2		1					2		1				
Gloucester County			3											
Hudson County														
Hunterdon County														
Mercer County	5	4						1	3					
Middlesex County							1							
Monmouth County	2													
Morris County														
Ocean County														
Passaic County														
Salem County														
Somerset County														
Sussex County		1							1					
Union County	1			1	1		3	1			1	1		1
Warren County														
Unknown														
<b>State Total</b>	15	5	4	4	1		5	7	4	1	3	1		4

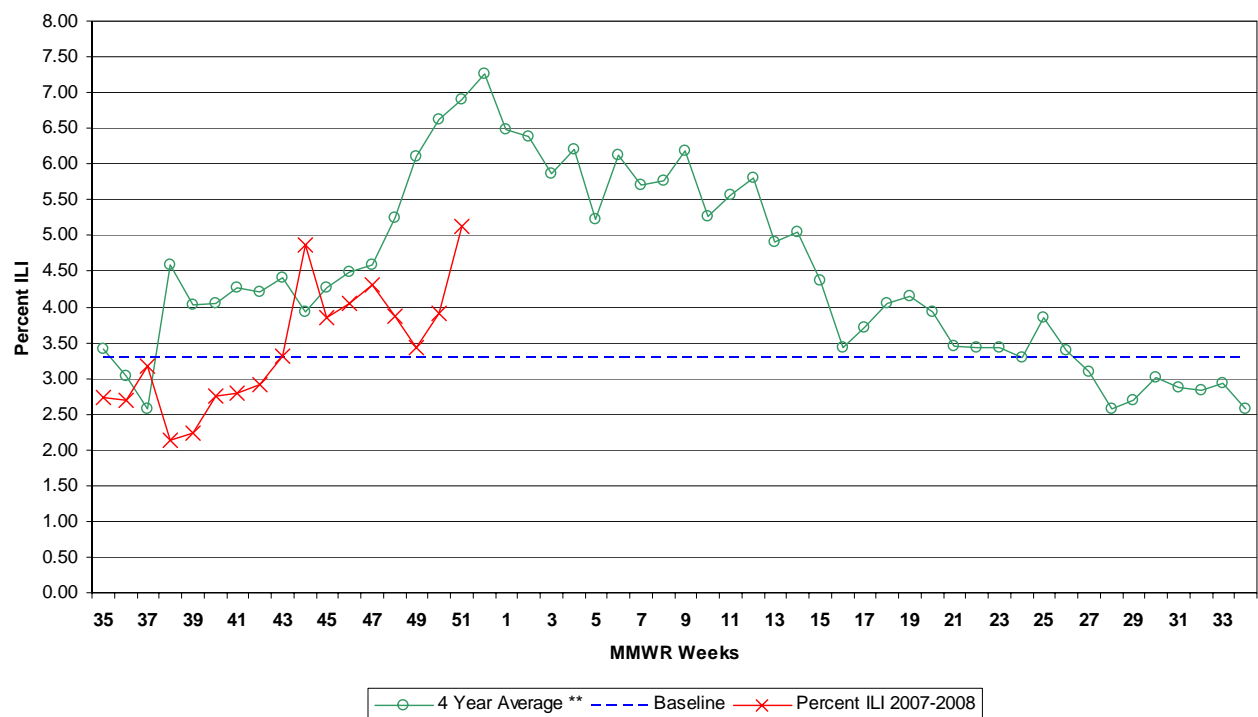
\*Rapid data is acquired from facilities reporting rapid influenza tests via NREVSS or CDRSS ILI module. Culture results are obtained via PHEL, hospital viral culture laboratories or commercial laboratories.

## **Influenza-like Illness (ILI) Surveillance\***

### **Emergency Departments**

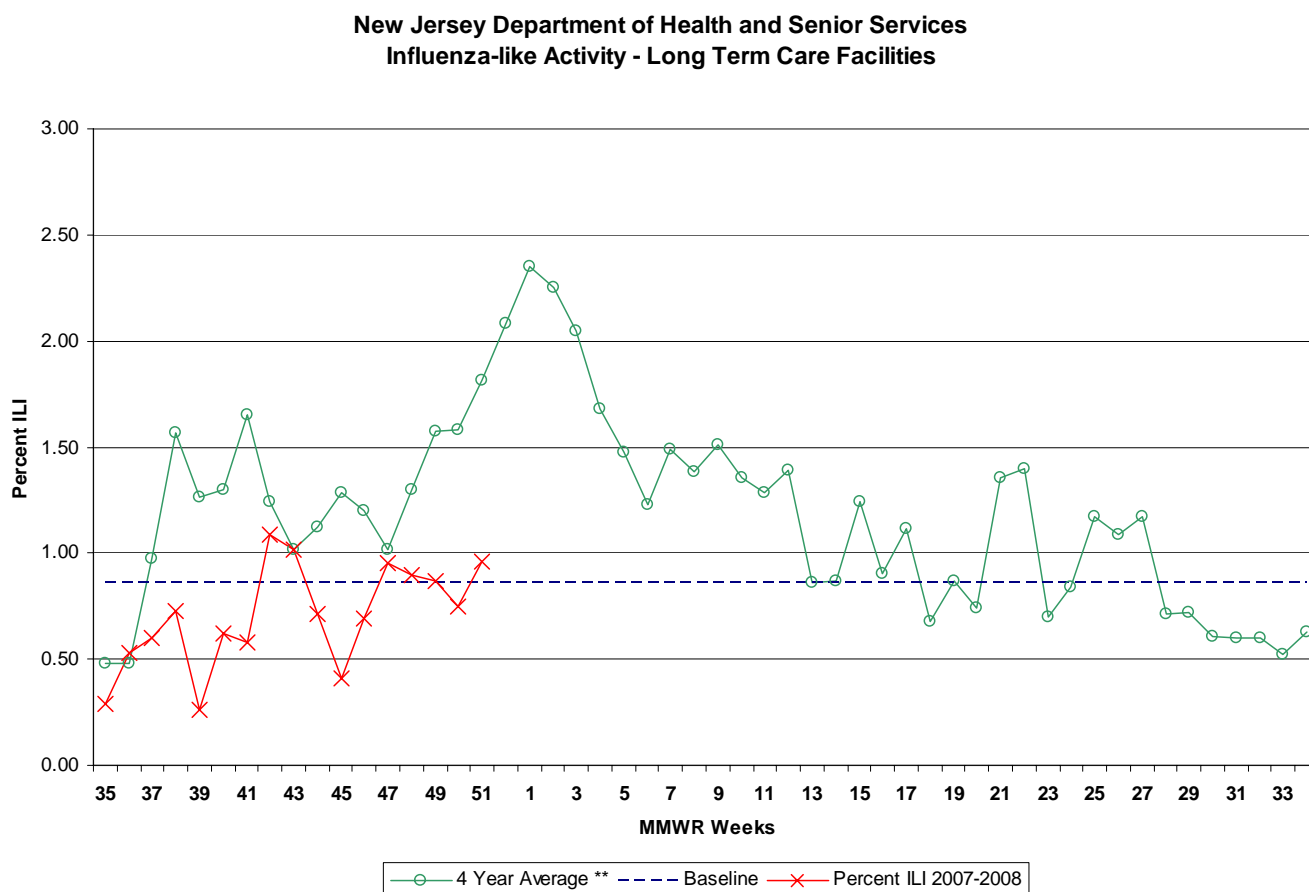
During week 51, 5.12% ILI was reported statewide from emergency departments. This is an increase over the previous week (3.92%). The percent ILI for each county ranged from 0.00 to 12.24%. The percent ILI for this same week last year was 4.85% in emergency departments. The percent ILI for the northwest (4.06%), northeast (9.04%) and central east (6.25%) public health regions were above state baseline (3.30%).

**New Jersey Department of Health and Senior Services  
Influenza-like Activity - Emergency Departments**



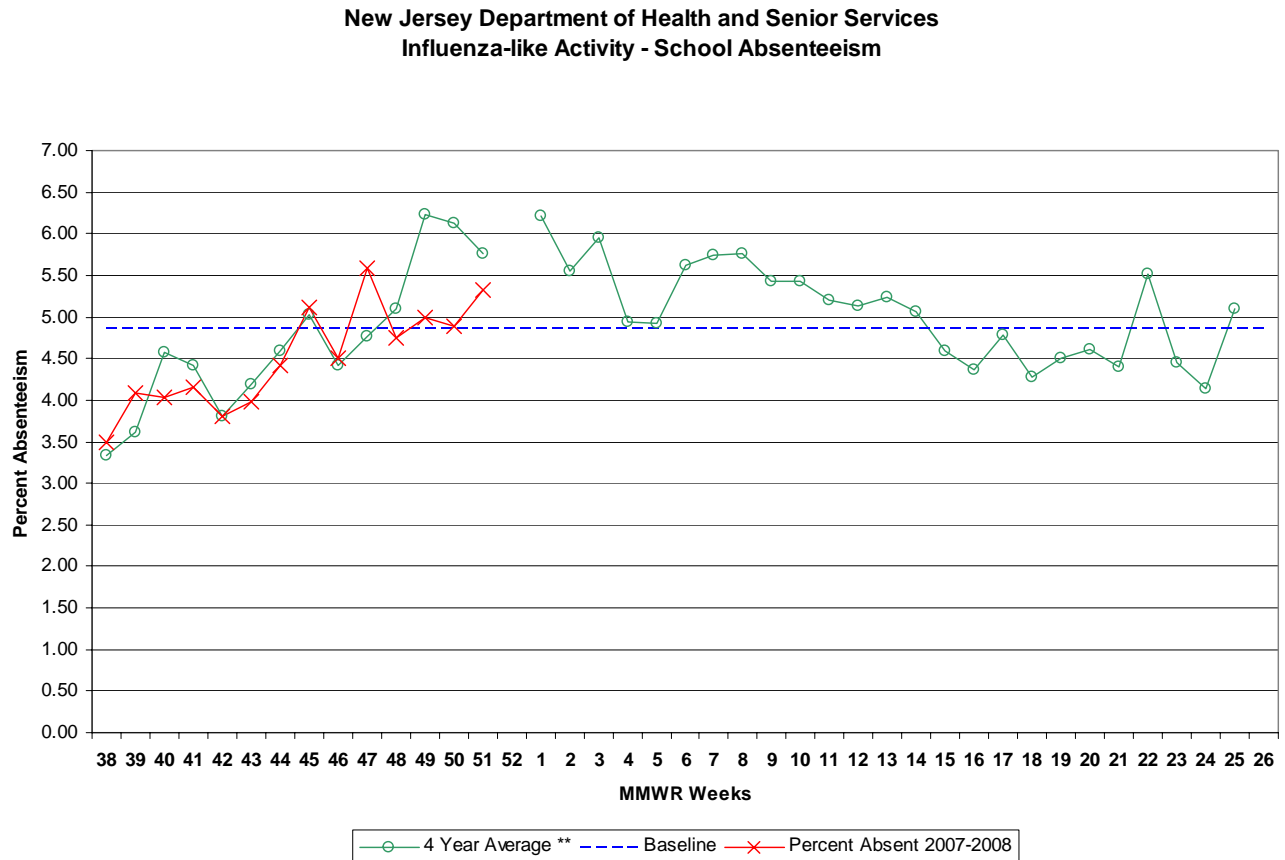
## Long-term Care Facilities

During week 51, 0.96% ILI was reported statewide from long term care facilities. This is an increase over the previous week (0.70%). The percent ILI for each county ranged from 0.00% to 3.85%. The percent ILI for this same week last year was 0.70% in long-term care facilities. The percent ILI for the northwest (0.87%), northeast (1.24%), and south (1.13%) public health regions were above state baseline (0.86%). No reports of ILI/respiratory outbreaks in communal living facilities were received in week 50.



## School Absenteeism

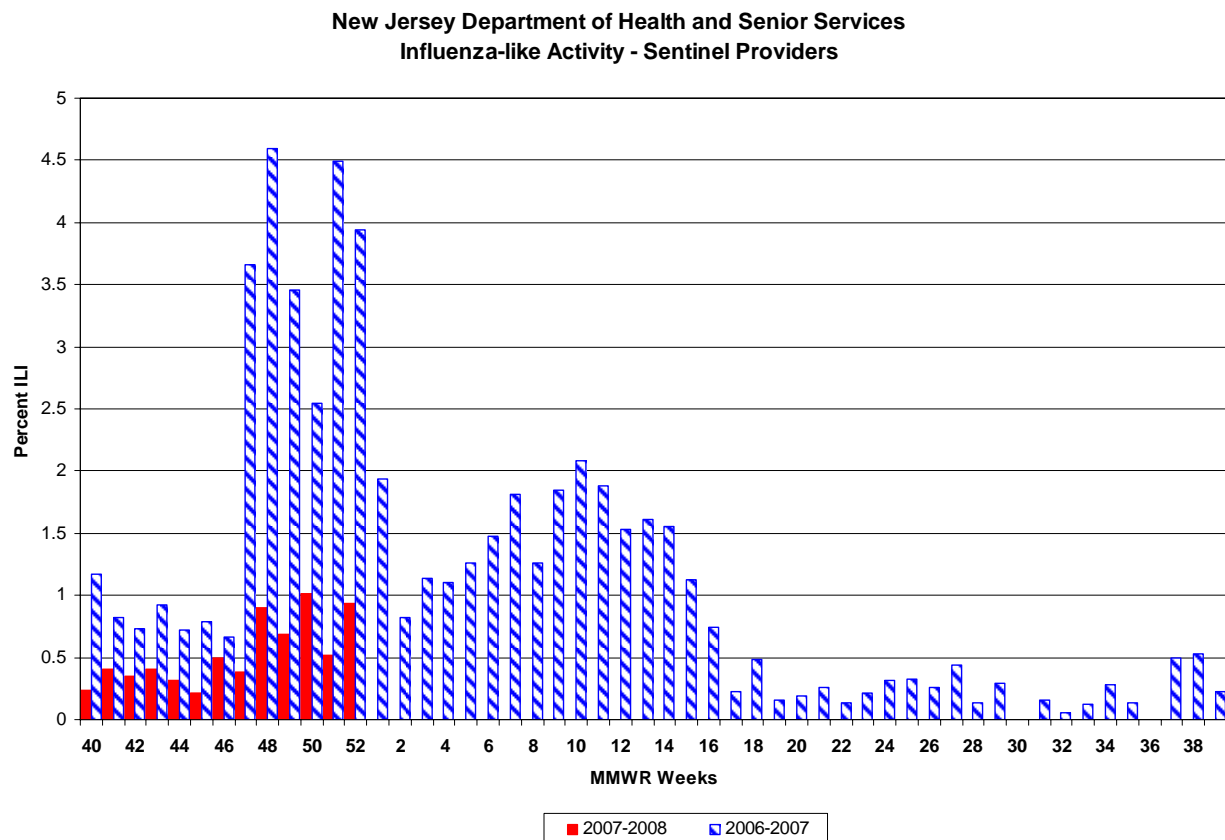
During week 51, schools reported 5.33% absenteeism. This is an increase over the previous week (4.89%). The percent ILI for each county ranged from 0.00 – 7.84%. The percent absent for this same week last year was 5.89%. The percent ILI for the northwest (5.31%), northeast (5.71%), central east (5.58%) and south (5.43%) public health regions were above state baseline (4.85%).



## **Sentinel Provider Surveillance**

During week 51, 0.52% of sentinel provider patient visits were due to ILI. These data reflect reports from nine (23%) of the enrolled sentinel providers.

During week 50, 1.01% of sentinel provider patient visits were due to ILI. These data reflect reports from twelve (31%) of the enrolled sentinel providers.



## **Pediatric Influenza Surveillance**

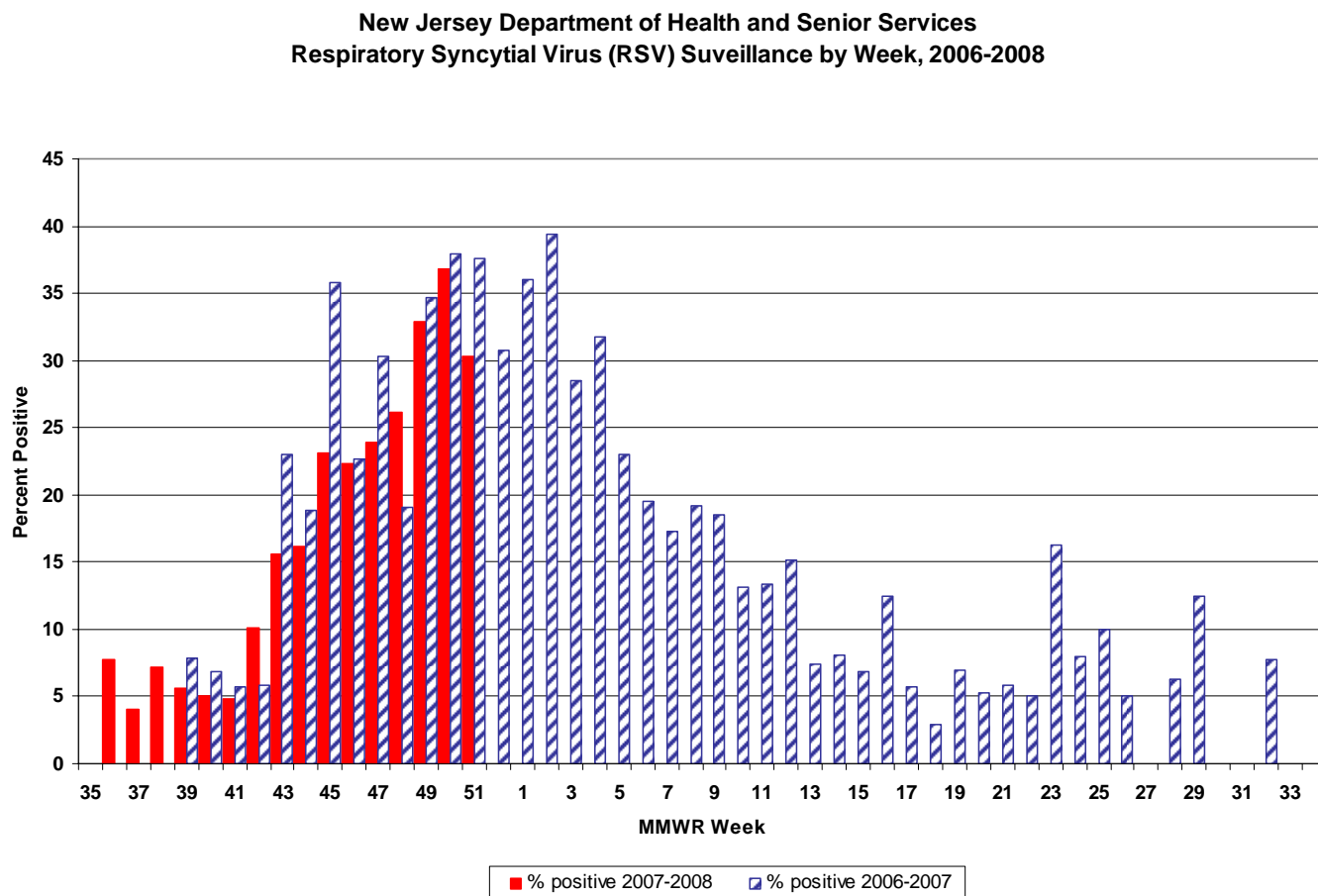
To date, NJDHSS has received 4 reports of pediatric illness. Three of these cases have met the case definition for pediatric illness or death associated with influenza

## **122 City Mortality Report**

During week 50, 5.61% of all deaths reported by the vital statistics offices in 6 New Jersey cities (i.e., Camden, Elizabeth, Jersey City, Newark, Paterson, Trenton) were due to pneumonia or influenza. This is an increase as the previous week (2.33%). The percentage of death due to pneumonia or influenza for this same week last year was 3.57%.

## **RSV Reports**

During week 51, 30.30% of all RSV samples tested were positive. This was a decrease over the previous week 36.80%. The percent of samples positive for RSV for this same week last year was 37.58%.



## **Additional Information**

For additional information regarding influenza surveillance please visit the following websites.

<http://nj.gov/health/flu/surveillance.shtml>

<http://www.cdc.gov/flu/>

\* Baseline is calculated by taking the average of statewide percentages of ILI for a 4 year (2004, 2005, 2006, 2007) period during months when influenza is less likely to be circulating (May-August). Weeks in which less than 4 counties reported were not included in the calculation.

\*\*Four year average is an average of the 2003-2004, 2004-2005, 2005-2006, 2006-2007 influenza seasons.





	Long Term Care			Schools			Hospital Emergency Department			RSV Tests	
County	# Enrolled	# Reports Rec'd	% ILI	# Enrolled	# Reports Rec'd	% Absent	# Enrolled	# Reports Rec'd	% ILI	# Positive	Total Tests Performed
ATLANTIC	5	2	0.80	18	15	6.79	4	4	2.16	6	35
BERGEN	3	0	0.00	14	0	0.00	6	0	0.00	0	0
BURLINGTON	6	2	0.00	104	52	4.97	3	0	0.00	0	0
CAMDEN	7	2	0.82	17	1	6.24	7	4	0.28	0	0
CAPE MAY	5	4	0.88	11	9	4.43	1	1	12.24	0	4
CUMBERLAND	4	2	2.43	18	9	7.84	3	3	5.91	2	8
ESSEX	14	1	3.85	31	3	4.12	11	5	9.08	18	41
GLOUCESTER	2	0	0.00	5	2	0.00	2	2	2.84	3	6
HUDSON	10	4	1.15	87	64	5.74	8	1	8.33	0	4
HUNTERDON	4	4	0.45	8	7	3.47	1	1	0.98	10	14
MERCER	10	4	0.57	24	10	4.21	5	2	3.23	12	45
MIDDLESEX	2	0	0.00	46	14	5.65	5	1	11.63	32	111
MONMOUTH	6	1	0.85	25	14	7.62	5	3	2.82	0	0
MORRIS	11	1	0.98	14	12	2.44	4	2	1.79	0	0
OCEAN	6	2	0.37	27	5	5.15	4	3	7.18	0	0
PASSAIC	8	0	0.00	23	0	0.00	6	0	0.00	0	0
SALEM	4	1	1.40	5	0	0.00	1	1	0.00	0	0
SOMERSET	5	2	1.19	62	23	4.16	2	0	0.00	0	0
SUSSEX	5	5	0.86	24	24	6.16	2	2	5.97	0	11
UNION	4	0	0.00	118	47	4.95	5	5	6.45	7	18
UNKNOWN	0	0	0.00	0	0	0.00	0	0	0.00	0	0
WARREN	7	2	0.89	21	12	6.11	2	2	6.21	0	0
NW Region	31	8	0.87	82	48	5.31	14	6	4.06	0	11
NE Region	27	5	1.24	132	67	5.71	25	6	9.04	18	45
CW Region	19	10	0.67	94	40	4.06	8	3	2.21	22	59
CE Region	18	3	0.51	216	80	5.58	19	12	6.25	39	129
South Region	33	13	1.13	178	88	5.43	21	15	3.08	11	53
State Total	128	39	0.96	702	323	5.33	87	42	5.12	90	297