

New Jersey Department of Health and Senior Services
Communicable Disease Service
Influenza Brief
Week Ending August 8, 2009 (MMWR Week 31)

Influenza activity level: REGIONAL

NOTE: ILI activity is down in all counties. Regional activity is primarily indicative of confirmatory laboratory results for novel influenza A H1N1 from 5 counties.

New Jersey	% ILI week 31 (range county level)	% ILI week 31 last year	State Baseline*	% ILI previous week 30 same year
Long Term Care Facilities	0.73% (0.00-2.18)	0.25%	0.69%	0.70%
Schools (absenteeism)	CLOSED	CLOSED	CLOSED	CLOSED
Emergency Departments	2.31% (0.00-8.51)	2.04%	2.60%	2.57%

Influenza Activity Level Public Health Regions*

Region	Counties in Region	Activity Level
NW Region	Morris, Passaic, Sussex, Warren	SPORADIC
NE Region	Bergen, Essex, Hudson	SPORADIC
CW Region	Hunterdon, Mercer, Somerset	NO ACTIVITY
CE Region	Middlesex, Monmouth, Ocean, Union	SPORADIC
South Region	Atlantic, Burlington, Camden, Cape May, Salem, Cumberland, Gloucester	LOCAL

*See note above

Sentinel Provider Surveillance

During week 31, 1.32% of sentinel provider patient visits were due to ILI. These data reflect reports from eight (18%) of the enrolled sentinel providers.

During week 30, 1.12% of sentinel provider patient visits were due to ILI. These data reflect reports from seventeen (39%) of the enrolled sentinel providers.

* Baseline is calculated by taking the average of statewide percentages of ILI for a 3 year (2006, 2007, 2008) period during months when influenza is less likely to be circulating (May-August).

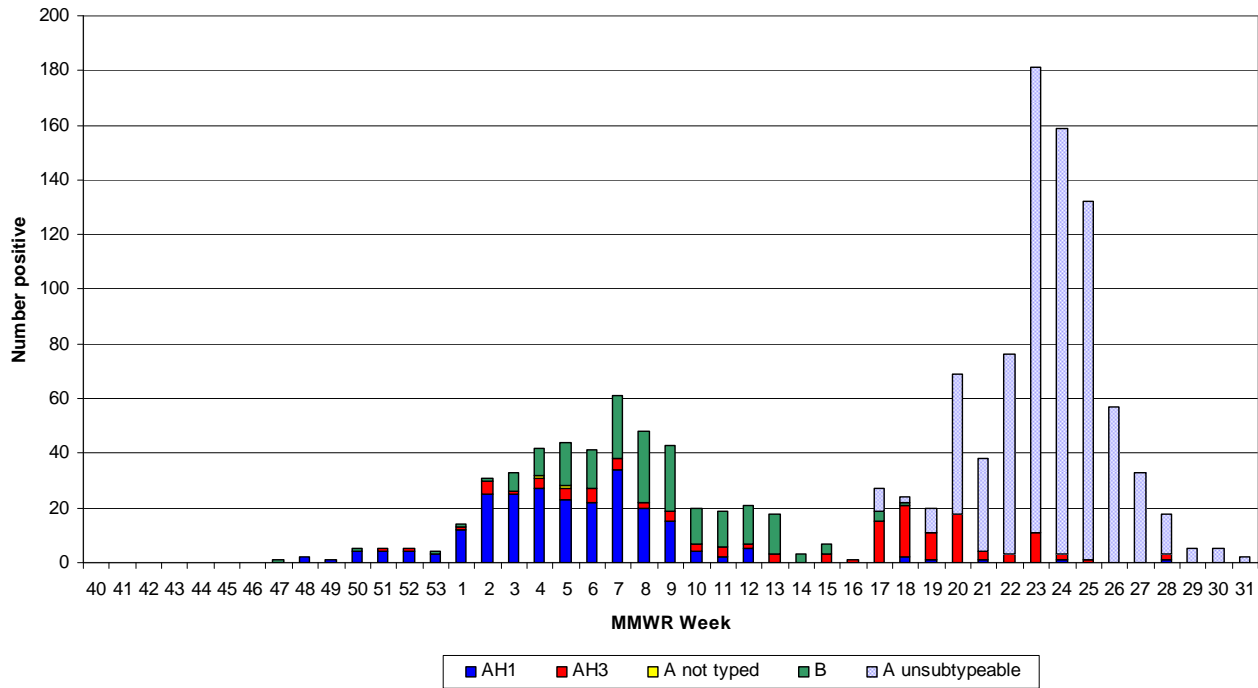
Laboratory

As of week 31, 563 samples were found to be positive by viral culture or PCR for influenza AH1, AH3 and influenza B. Please see graph on next page for weekly distribution.

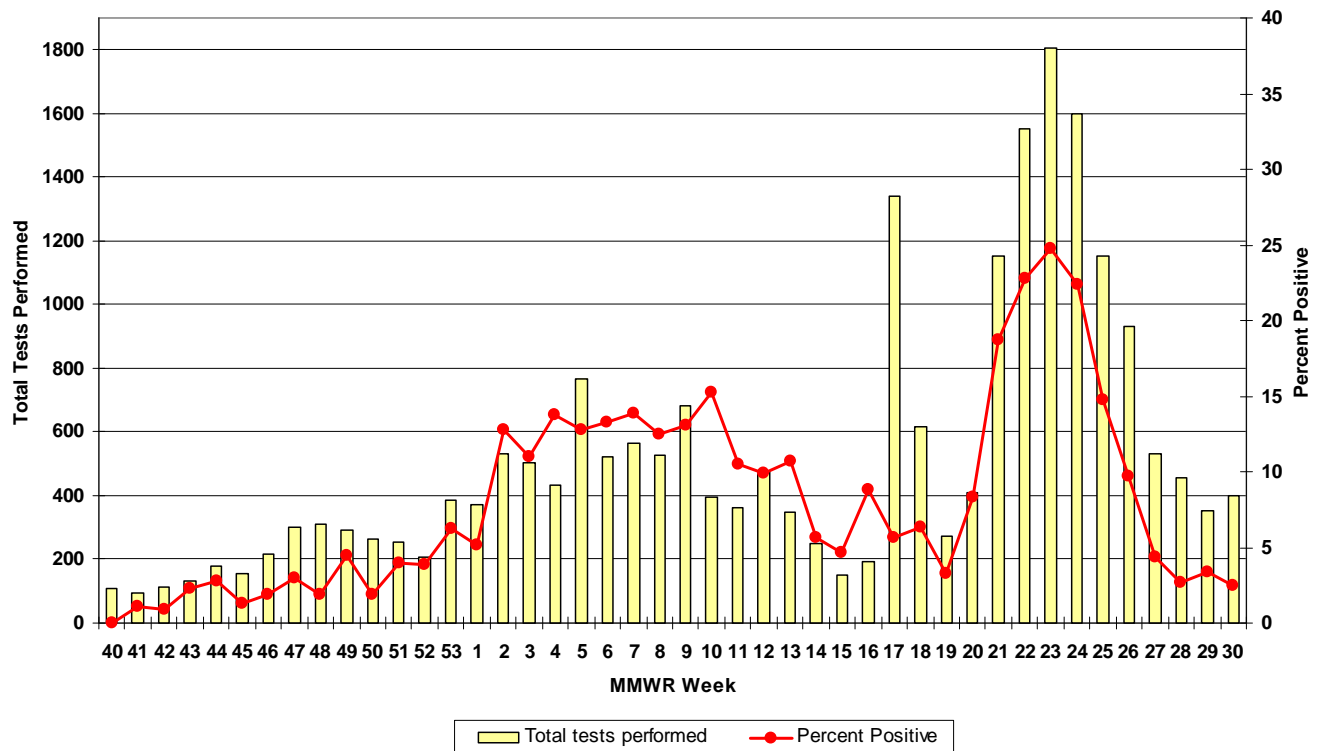
County	Week 40 to Week 31							Week 29, 30, 31						
	Rapid*			Culture*				Rapid*			Culture*			
	A	B	A/B	A H1	A H3	A UNK	B	A	B	A/B	A H1	A H3	A UNK	B
Atlantic County	87	17	0	9	2	0	2	1	0	0	0	0	0	0
Bergen County	206	13	0	11	17	2	7	1	0	0	0	0	0	0
Burlington County	109	24	0	2	0	0	1	2	0	0	0	0	0	0
Camden County	0	0	0	1	0	0	1	0	0	0	0	0	0	0
Cape May County	28	6	0	14	1	0	5	2	0	0	0	0	0	0
Cumberland County	0	0	0	7	1	0	6	0	0	0	0	0	0	0
Essex County	566	65	23	28	20	0	18	3	0	0	0	0	0	0
Gloucester County	0	0	0	5	0	0	13	0	0	0	0	0	0	0
Hudson County	289	12	0	25	19	0	29	3	0	0	0	0	0	0
Hunterdon County	35	0	81	22	8	0	13	0	0	1	0	0	0	0
Mercer County	28	0	0	14	10	0	8	0	0	0	0	0	0	0
Middlesex County	106	4	0	25	15	0	18	0	0	0	0	0	0	0
Monmouth County	62	23	76	13	5	0	8	4	0	9	0	0	0	0
Morris County	0	0	0	18	6	0	16	0	0	0	0	0	0	0
Ocean County	0	0	0	1	5	0	3	0	0	0	0	0	0	0
Passaic County	410	15	0	4	4	0	7	3	0	0	0	0	0	0
Salem County	1	1	0	0	0	0	1	0	0	0	0	0	0	0
Somerset County	0	0	22	15	6	0	12	0	0	0	0	0	0	0
Sussex County	72	22	0	1	1	0	2	0	0	0	0	0	0	0
Union County	268	6	18	19	10	0	21	2	0	3	0	0	0	0
Warren County	51	13	0	3	1	0	1	0	0	0	0	0	0	0
Unknown	0	0	0	1	0	0	0	0	0	0	0	0	0	0
State Total	2318	221	220	238	131	2	192	21	0	13	0	0	0	0

* Baseline is calculated by taking the average of statewide percentages of ILI for a 3 year (2006, 2007, 2008) period during months when influenza is less likely to be circulating (May-August).

Influenza Laboratory Report
Positive Specimens by Week
2008-2009 Influenza Season
 *Culture results to week 15, PCR results week 15 to present

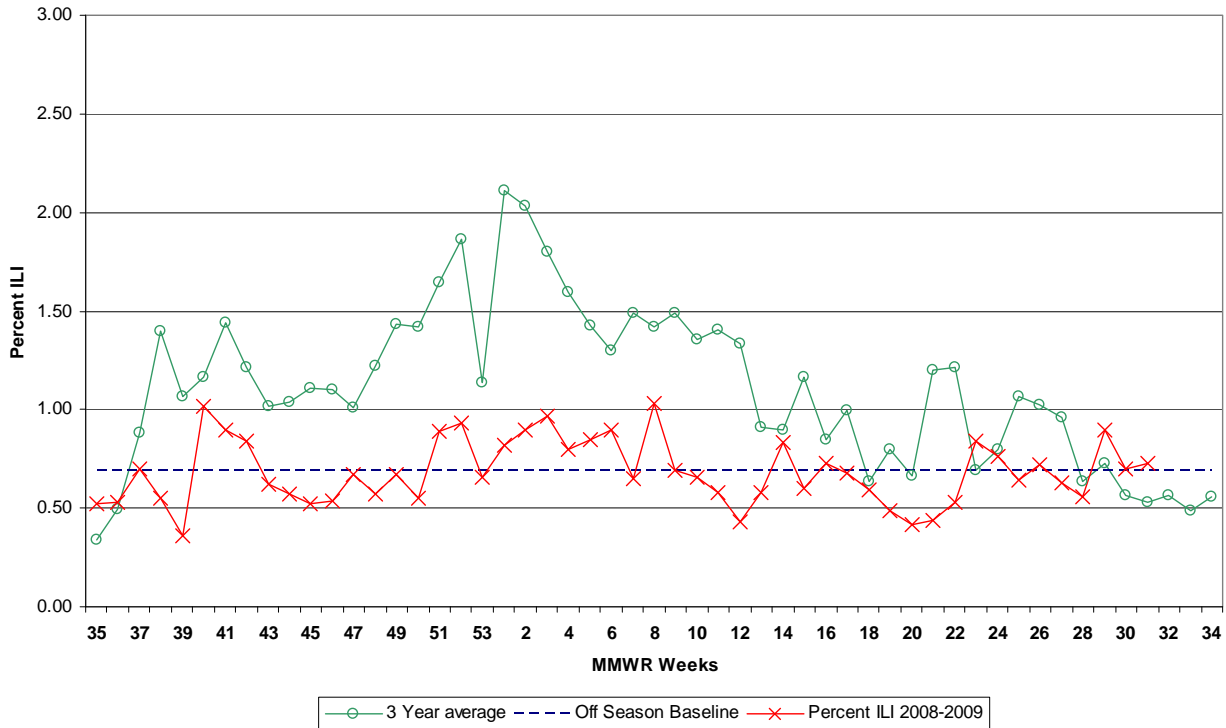


Influenza Rapid Antigen Tests
Total and Percent Positive
2008-2009 Influenza Season

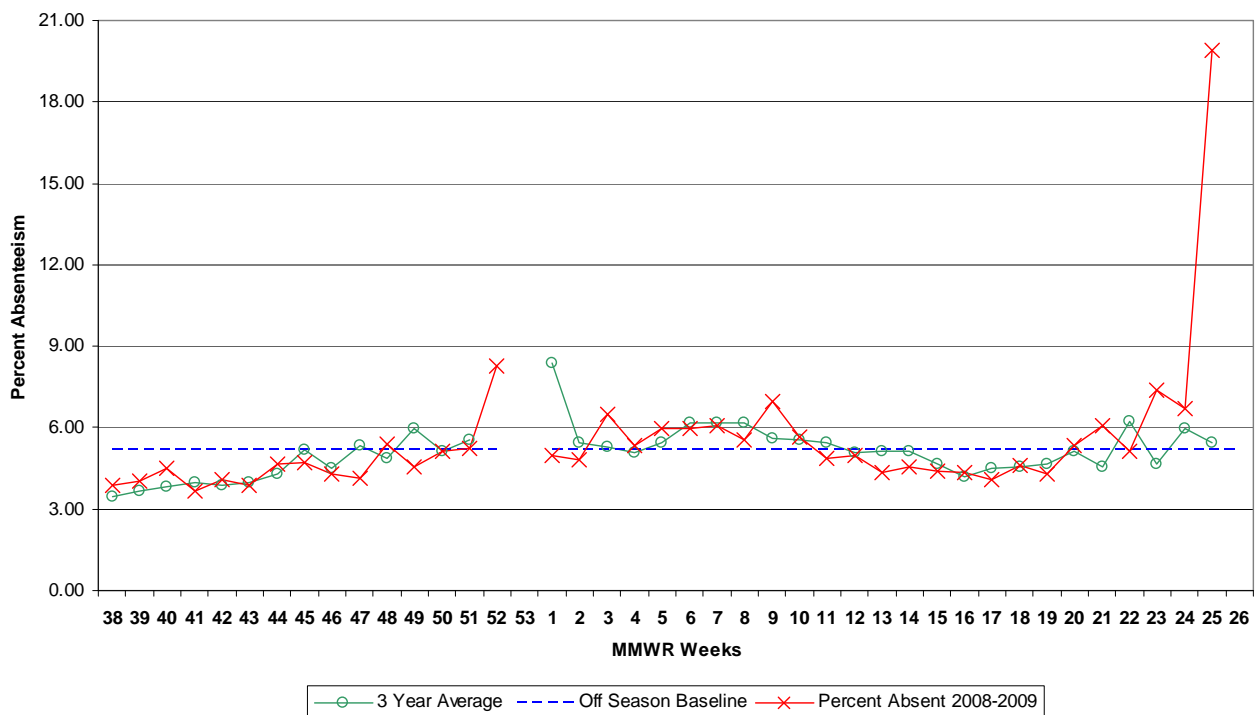


* Baseline is calculated by taking the average of statewide percentages of ILI for a 3 year (2006, 2007, 2008) period during months when influenza is less likely to be circulating (May-August).

**New Jersey Department of Health and Senior Services
Influenza-like Activity - Long Term Care Facilities**



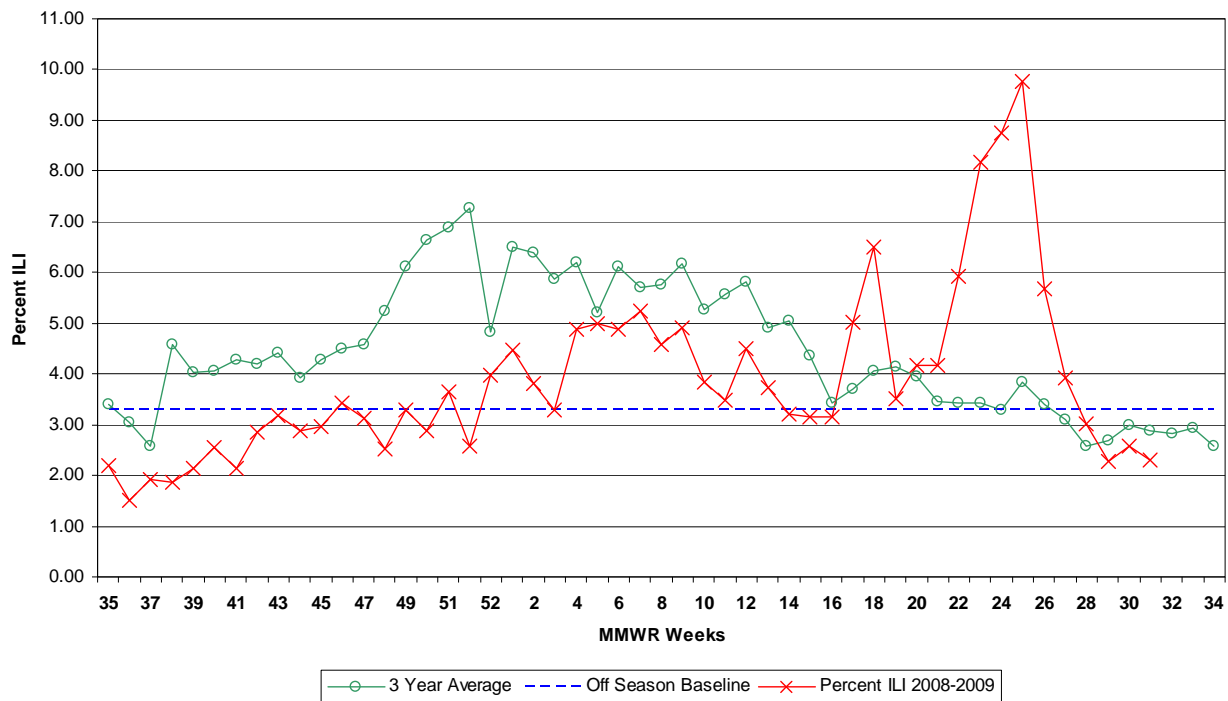
**New Jersey Department of Health and Senior Services
Influenza-like Activity - School Absenteeism**



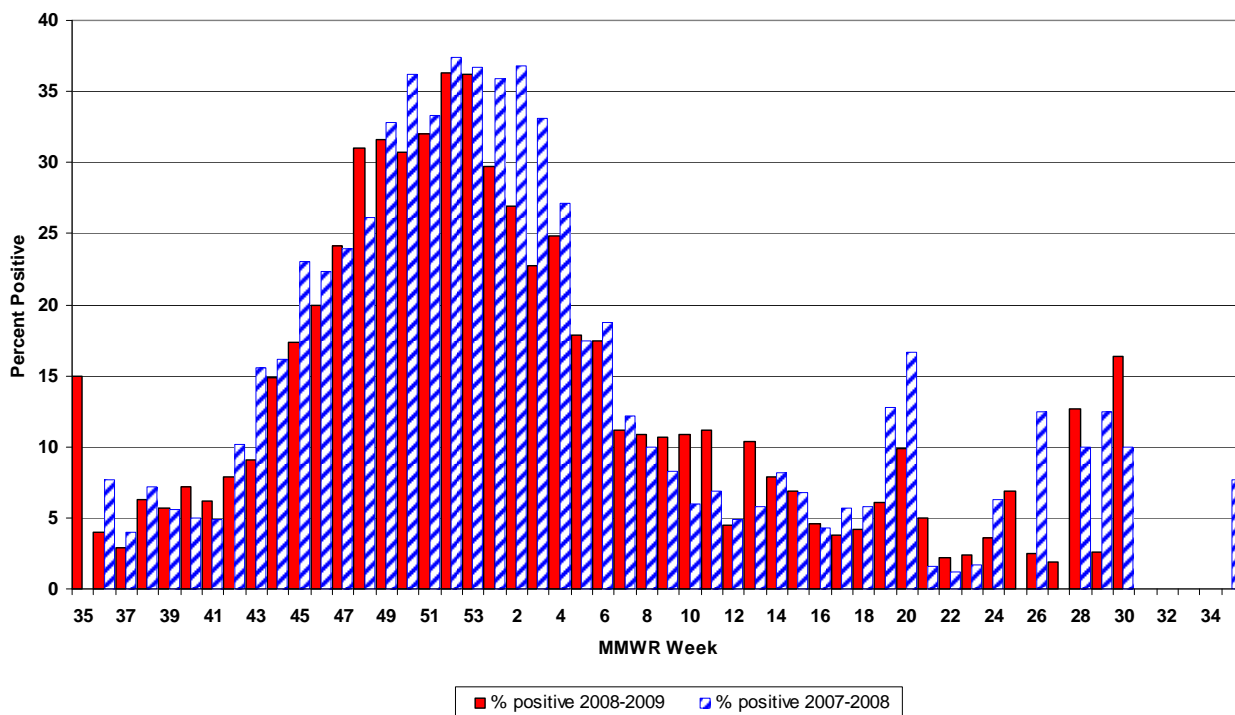
*Reports received from 5 counties.

* Baseline is calculated by taking the average of statewide percentages of ILI for a 3 year (2006, 2007, 2008) period during months when influenza is less likely to be circulating (May-August).

**New Jersey Department of Health and Senior Services
Influenza-like Activity - Emergency Departments**

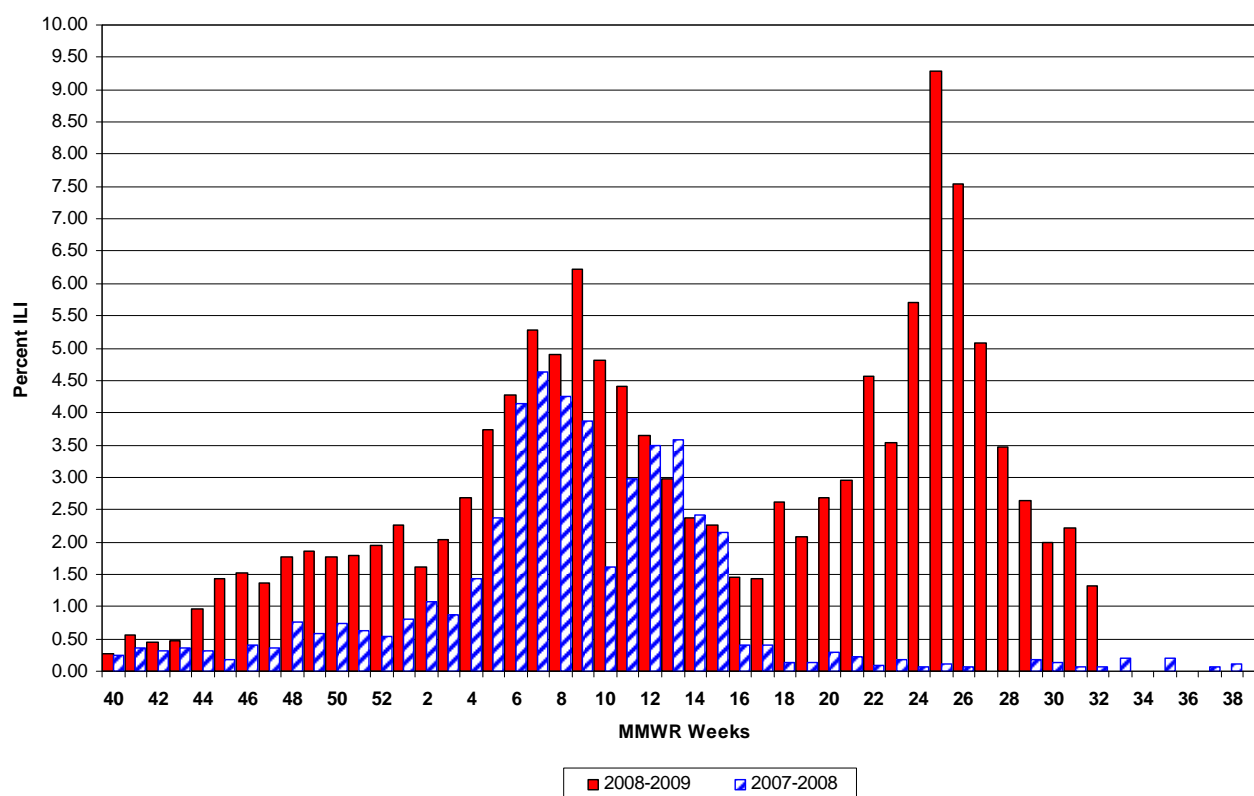


**New Jersey Department of Health and Senior Services
Respiratory Syncytial Virus (RSV) Surveillance by Week, 2006-2008**



* Baseline is calculated by taking the average of statewide percentages of ILI for a 3 year (2006, 2007, 2008) period during months when influenza is less likely to be circulating (May-August).

**New Jersey Department of Health and Senior Services
Influenza-like Activity - Sentinel Providers**



Novel Influenza A H1N1

As of 8/12/09 at 9:00 AM, NJ has identified 988 confirmed and 480 probable who have been tested positive for the Novel Influenza AH1N1 virus.

* Baseline is calculated by taking the average of statewide percentages of ILI for a 3 year (2006, 2007, 2008) period during months when influenza is less likely to be circulating (May-August).



	Long Term Care			Schools			Hospital Emergency Department		
County	# Enrolled	# Reports Rec'd	% ILI	# Enrolled	# Reports Rec'd	% Absent	# Enrolled	# Reports Rec'd	% ILI
August, 4, 2009 12:00 AM MMRW WEEK 31									
ATLANTIC	4	1	1.60	19	0	0.00	4	4	0.58
BERGEN	3	1	0.00	25	0	0.00	6	6	2.64
BURLINGTON	6	1	0.00	115	0	0.00	3	2	1.01
CAMDEN	7	0	0.00	17	0	0.00	7	5	0.64
CAPE MAY	6	2	0.00	11	0	0.00	1	1	6.25
CUMBERLAND	6	2	2.18	18	0	0.00	3	0	0.00
ESSEX	18	4	0.67	34	0	0.00	11	10	2.06
GLOUCESTER	5	1	0.00	4	0	0.00	2	2	0.81
HUDSON	10	0	0.00	94	0	0.00	6	5	1.49
HUNTERDON	4	4	0.89	8	0	0.00	1	1	0.00
MERCER	11	0	0.00	26	0	0.00	5	4	2.91
MIDDLESEX	2	0	0.00	89	0	0.00	5	4	1.65
MONMOUTH	14	2	1.26	24	0	0.00	5	5	2.31
MORRIS	2	0	0.00	13	0	0.00	4	3	8.31
OCEAN	6	1	0.00	20	0	0.00	4	4	3.99
PASSAIC	9	0	0.00	23	0	0.00	6	2	1.22
SALEM	4	1	1.39	5	0	0.00	1	1	0.00
SOMERSET	6	2	1.49	63	0	0.00	2	0	0.00
SUSSEX	5	5	0.36	22	0	0.00	2	2	3.90
UNION	4	1	0.00	130	0	0.00	5	5	1.21
UNKNOWN	0	0	0.00	1	0	0.00	0	0	0.00
WARREN	8	3	0.00	24	0	0.00	2	2	1.85
NW Region	24	8	0.29	82	0	0.00	14	9	4.18
NE Region	31	5	0.50	153	0	0.00	23	21	2.15
CW Region	21	6	1.08	97	0	0.00	8	5	2.60
CE Region	26	4	0.64	263	0	0.00	19	18	2.45
South Region	38	8	1.20	189	0	0.00	21	15	1.21
State Total	140	31	0.73	784	0	0.00	85	68	2.31