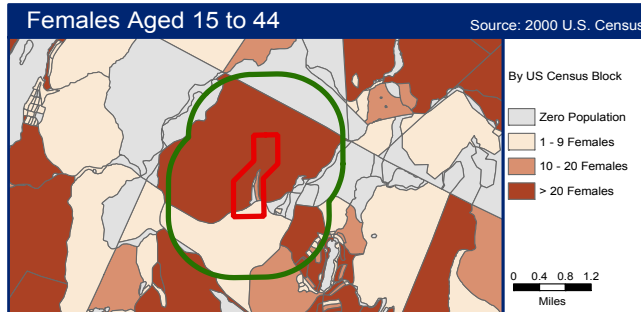
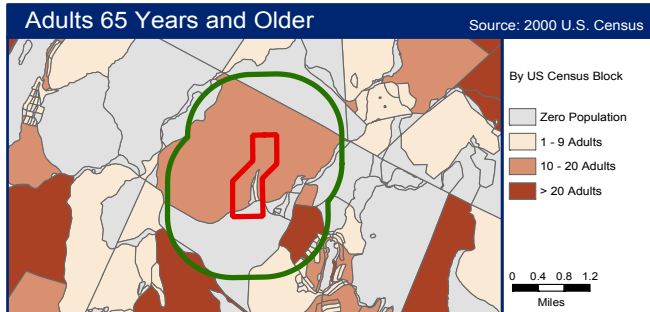
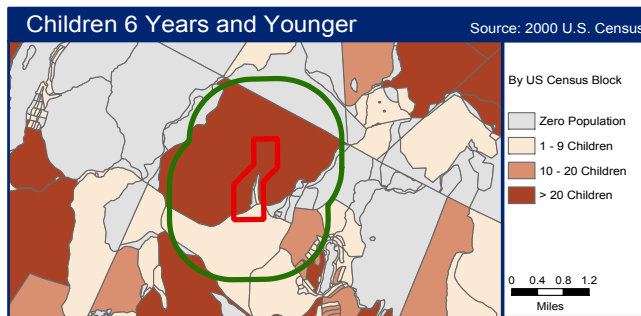
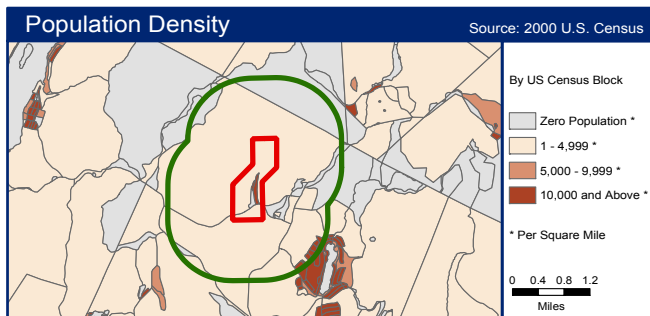


Demographic Statistics
 Within One Mile of Site*

Total Population	866
White Alone	553
Black Alone	88
Am. Indian & Alaska Native Alone	149
Asian Alone	11
Native Hawaiian & Other Pacific Islander Alone	0
Some Other Race Alone	18
Two or More Races	47
Hispanic or Latino**	68
Children Aged 6 and Younger	87
Adults Aged 65 and Older	103
Females Aged 15 to 44	168
Total Housing Units	209

Base Map Source: Geographic Data Technology (DYNAMAP 2000), August 2002
 Site Boundary Data Source: ATSDR Public Health GIS Program, August 2002
 Coordinate System (All Panels): NAD 1983 State Plane New York East FIPS 3101 Feet

Demographics Statistics Source: 2000 U.S. Census
 * Calculated using an area-proportion spatial analysis technique
 ** People who identify their origin as Hispanic or Latino may be of any race.



GENERATED: 12-03-2003



FOR INTERNAL AND EXTERNAL RELEASE
 CENTERS FOR DISEASE CONTROL AND PREVENTION | UNITED STATES DEPARTMENT OF HEALTH AND HUMAN SERVICES

Figure 2: Ringwood Mines/Landfill Demographic Information

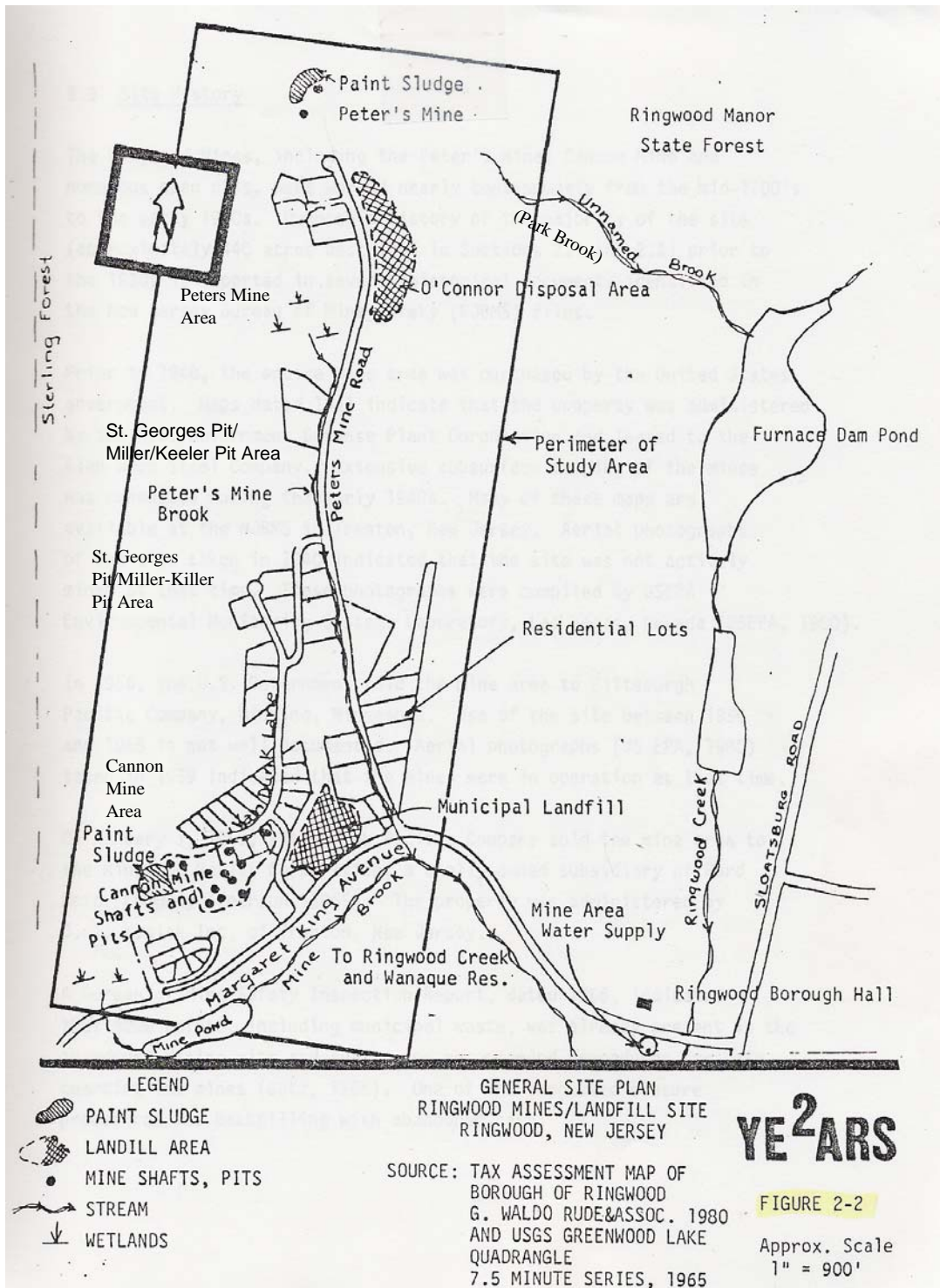
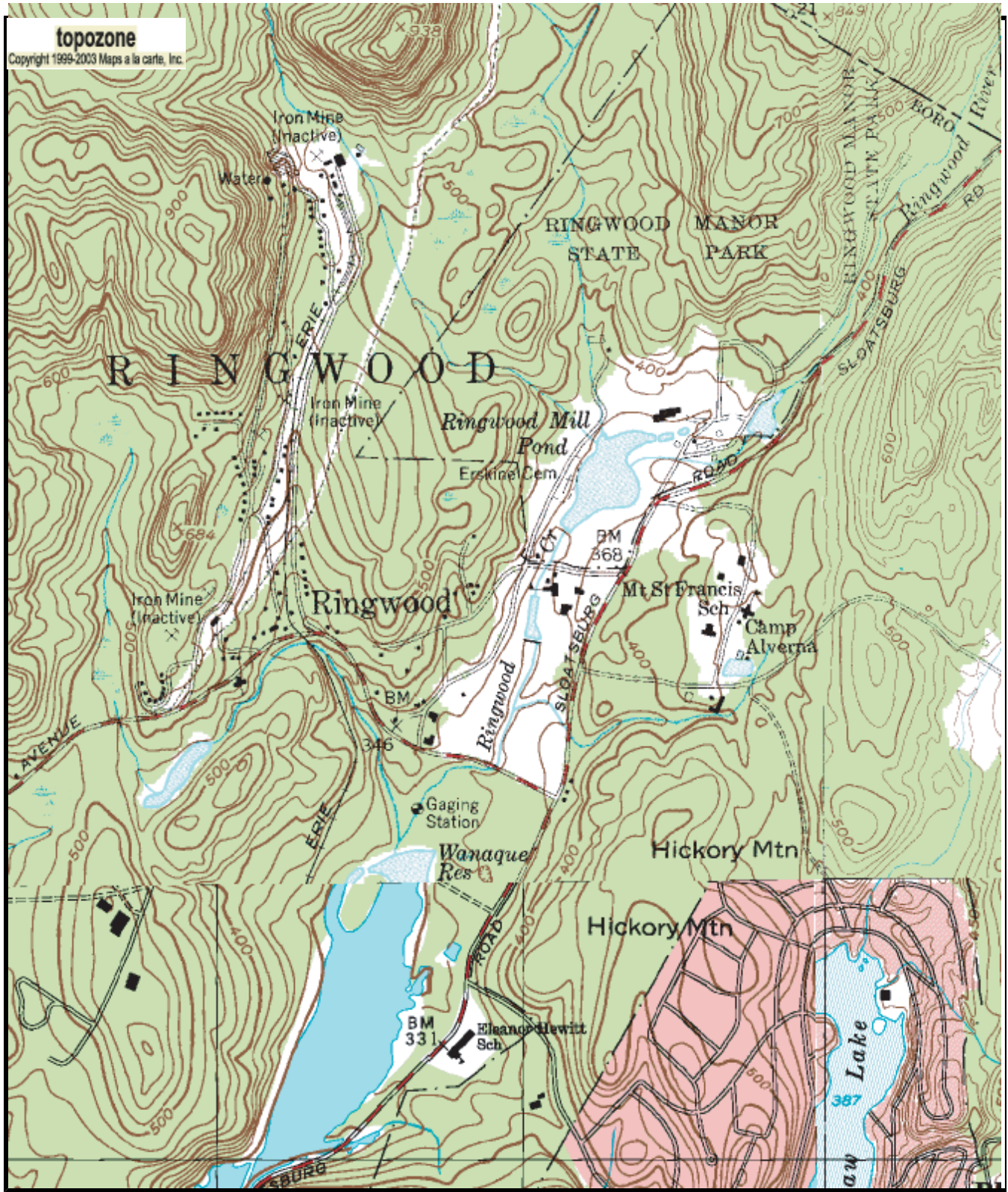


Figure 3: General Site Plan, Ringwood Mines/Landfill site



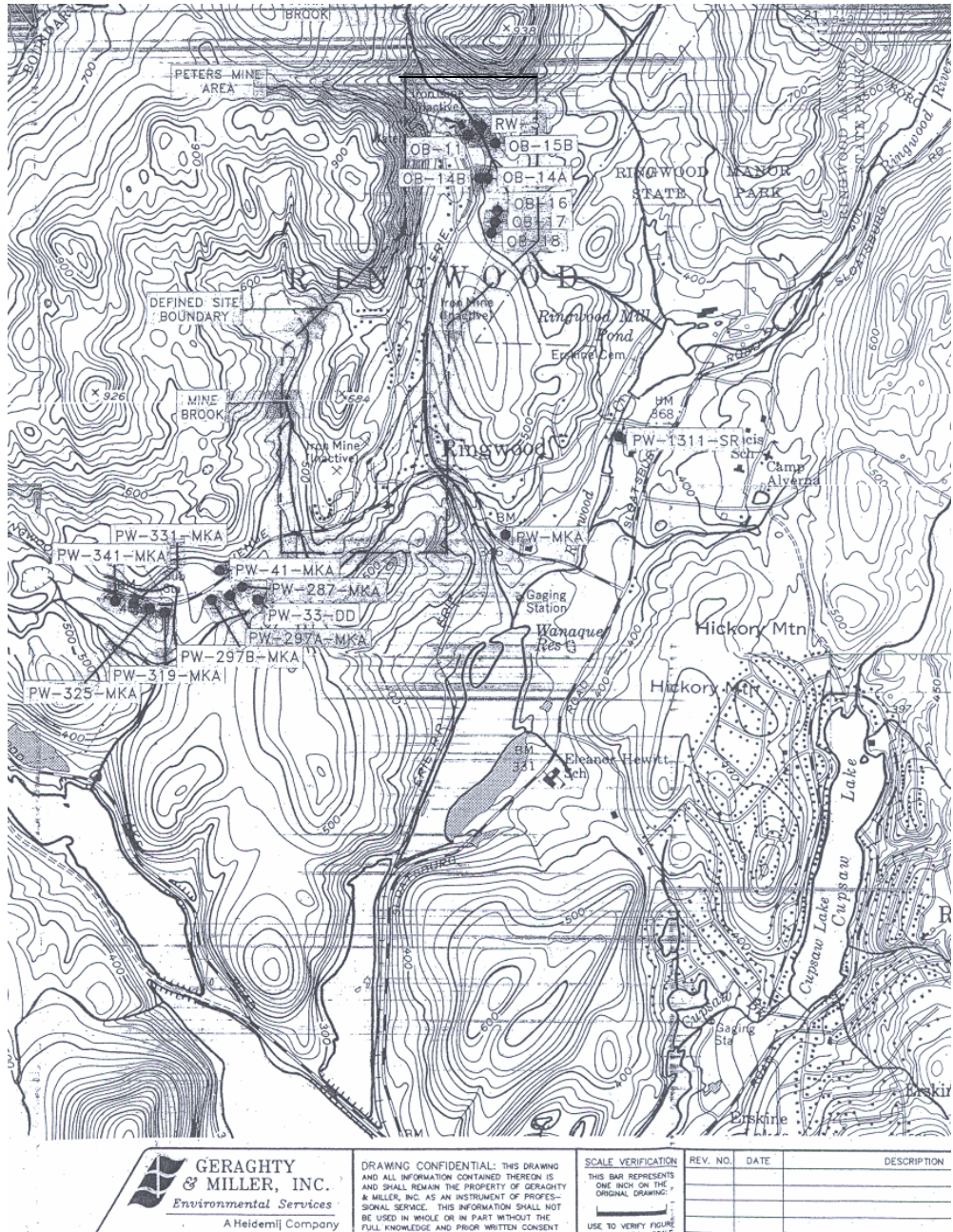
Map center is UTM 18 561950E 4553817N (WGS84/NAD83)

Greenwood Lake quadrangle

Projection is UTM Zone 18 NAD83 Datum

M*
G
M=-13.382
G=0.486

Figure 4: Topographic features of Ringwood Mines/Landfill site and adjacent areas



GERAGHTY & MILLER, INC.
 Environmental Services
 A Heidemij Company

DRAWING CONFIDENTIAL: THIS DRAWING AND ALL INFORMATION CONTAINED THEREON IS AND SHALL REMAIN THE PROPERTY OF GERAGHTY & MILLER, INC. AS AN INSTRUMENT OF PROFESSIONAL SERVICE. THIS INFORMATION SHALL NOT BE USED IN WHOLE OR IN PART WITHOUT THE FULL KNOWLEDGE AND PRIOR WRITTEN CONSENT

SCALE VERIFICATION
 THIS BAR REPRESENTS ONE INCH ON THE ORIGINAL DRAWING.
 USE TO VERIFY FIGURE

REV. NO.	DATE	DESCRIPTION

Figure 5: Location of Potables and Monitoring Wells sampled during Environmental Monitoring Program

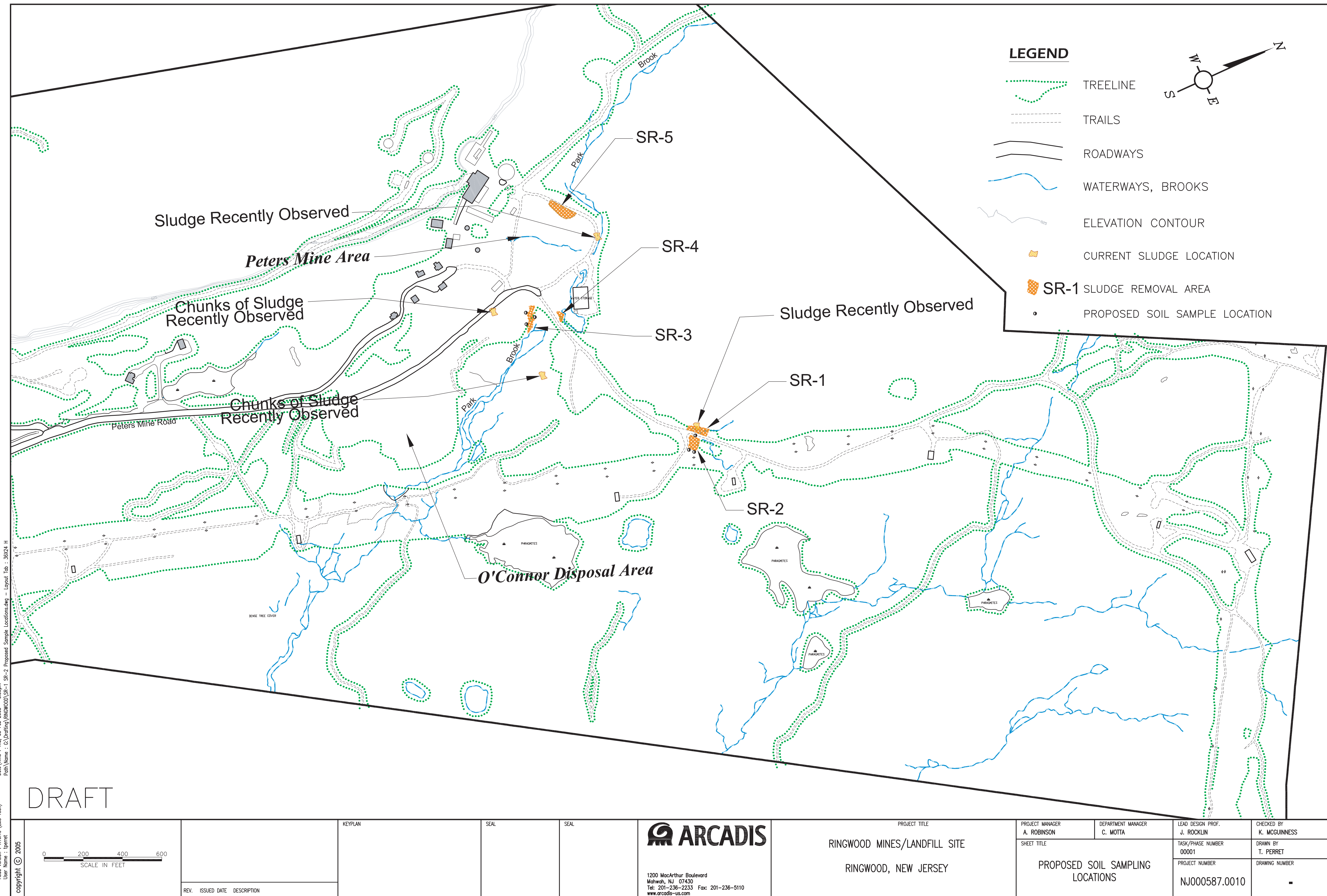


Figure 6: Proposed Soil Sampling Locations and Sludge Removal Areas

PROJECT TITLE RINGWOOD MINES/LANDFILL SITE RINGWOOD, NEW JERSEY	PROJECT MANAGER A. ROBINSON	DEPARTMENT MANAGER C. MOTTA	LEAD DESIGN PROF. J. ROCKLIN	CHECKED BY K. MCGUINNESS
	SHEET TITLE PROPOSED SOIL SAMPLING LOCATIONS		TASK/PHASE NUMBER 00001	DRAWN BY T. PERRET
REV. ISSUED DATE DESCRIPTION			PROJECT NUMBER NJ000587.0010	DRAWING NUMBER -

ARCADIS
 1200 MacArthur Boulevard
 Mahwah, NJ 07430
 Tel: 201-236-2233 Fax: 201-236-5110
 www.arcadis-us.com

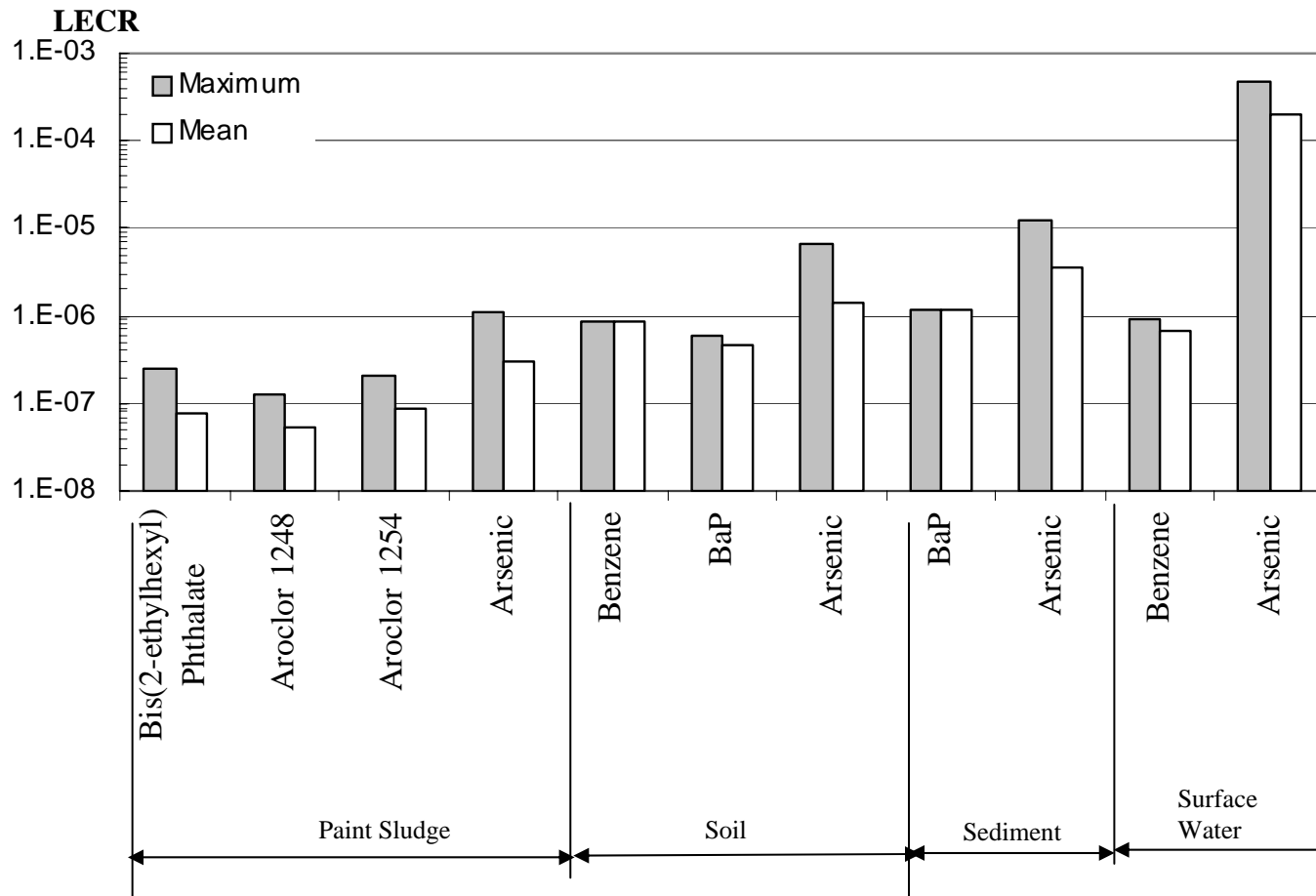


Figure 7: Calculated LECR from Exposures to Contaminants detected in paint sludge, Soil, Sediment and Surface Water

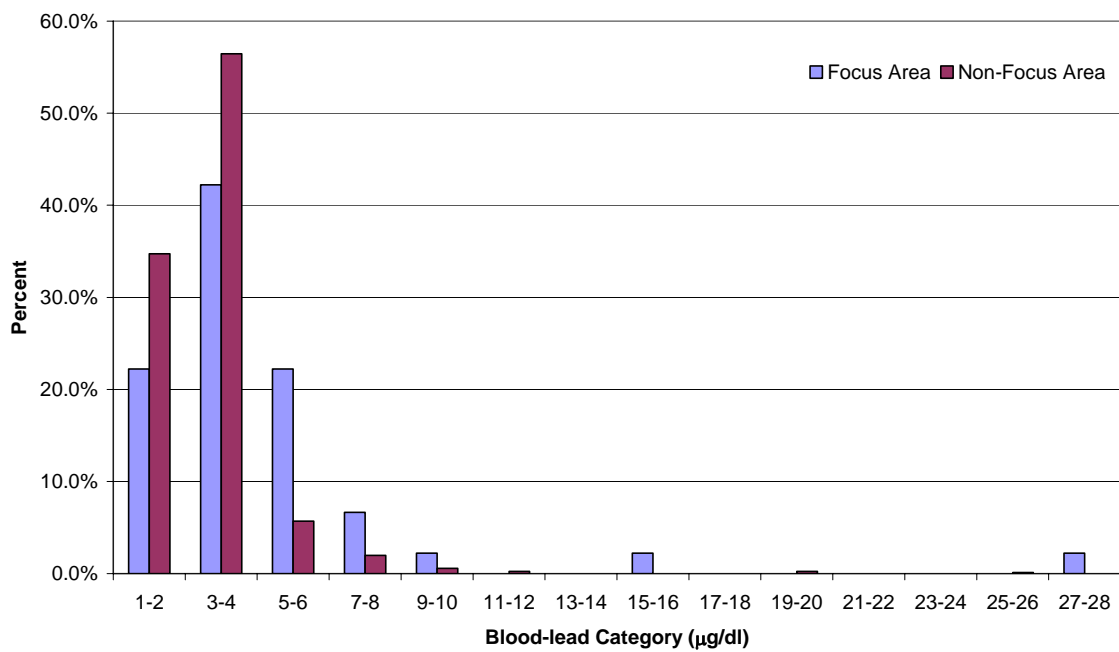


Figure 8: Blood-leads in Ringwood by Area (highest test per child only)