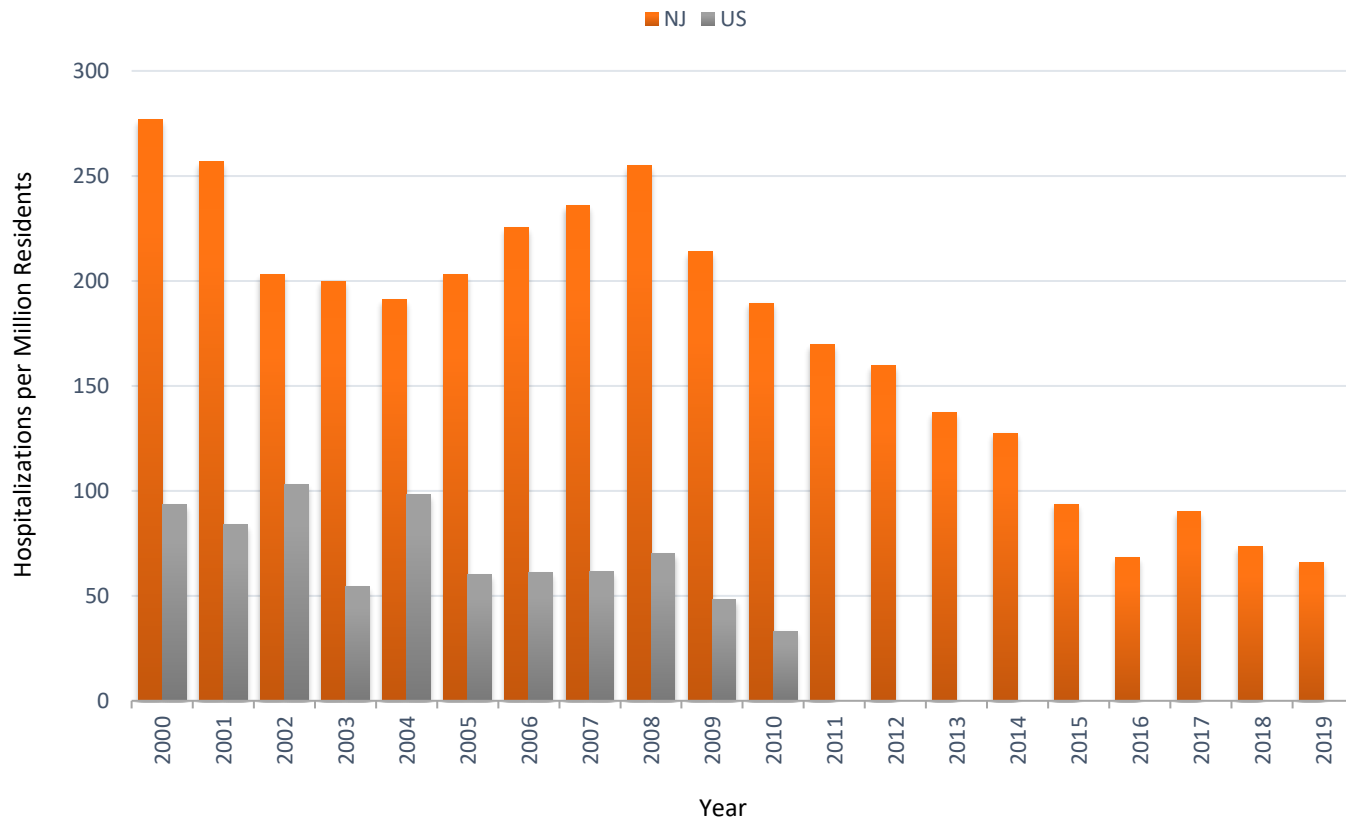


OHI #9: Hospitalizations from or with Pneumoconiosis

Annual Age-Standardized, Rate* of Inpatient Hospitalizations from Asbestosis, New Jersey and United States, 2000-2019



*Age-Standardized rate per million residents

Estimated Annual Number and Age-Standardized Rate* of Inpatient Hospitalizations from Asbestosis, New Jersey and United States, 2000-2019

Year	Number		Rate*	
	NJ	US	NJ	US
2000	1,919	20,223	277.0	93.3
2001	1,779	18,523	256.7	84
2002	1,406	22,441	203.0	103.2
2003	1,437	11,862	199.9	54.6
2004	1,377	21,312	191.0	98.2
2005	1,407	14,570	202.9	60.2
2006	1,643	14,416	225.4	60.9
2007	1,720	14,841	236.0	61.7
2008	1,777	16,876	255.0	70.1
2009	1,613	11,810	214.0	48.3
2010	1,442	8,123	189.4	33.2
2011	1,306	N/A	169.7	N/A
2012	1,259	N/A	159.5	N/A
2013	1,100	N/A	137.2	N/A
2014	1,047	N/A	127.5	N/A
2015	788	N/A	93.7	N/A
2016	573	N/A	68.3	N/A
2017	784	N/A	90.1	N/A
2018	637	N/A	73.5	N/A
2019	590	N/A	66.0	N/A

*Age-standardized rate per million residents

N/A: not available

Data Source: NJ Department of Health inpatient hospital discharge data; US Census Bureau, State Population Estimates [<https://data.census.gov/cedsci/advanced>]; US 2000 Standard Population [<https://www.cdc.gov/nchs/data/statnt/statnt20.pdf>]

Technical Notes:

- Includes non-federal, acute care hospitals only.
- Primary expected payer must be workers' compensation.
 - Self-employed individuals such as farmers and independent contractors, federal employees, railroad or longshore and maritime workers may not be covered by state workers' compensation systems.
- Estimates for all states, except Texas, include employed persons age 16 years and older.
- Hospitalizations from or with pneumoconiosis are identified by a principle or contributing diagnosis of the following: ICD-10-CM codes J60–J66 (All pneumoconiosis); ICD-10-CM code J60 (Coal workers' pneumoconiosis); ICD-10-CM code J61 (Asbestosis); ICD-10-CM code J62 (Silicosis); ICD-10-CM codes J63–J66 (Other or unspecified pneumoconiosis)
- Excludes patients with unknown age, out-of-state residents and unknown residence, and out-of-state inpatient hospitalizations.
- Cells with less than 5 hospitalizations may be too small to produce reliable estimates or may violate confidentiality requirements.
- Age-standardized rates reported in Table 9b and Figure 9 are based on the 2000 U.S. Standard Population and the Census Bureau's State Population Estimates. Rates are expressed as hospitalizations per one million residents.
 - Rates not calculated for cells with <5 hospitalizations and for Washington where hospitalizations were <10.

Limitations:

- State hospital discharge data are subject to a number of limitations:
 - Workers hospitalized for injuries in a given state, but who reside in a different state, will not be included in the case count for this indicator.
 - Practice patterns and payment mechanisms may impact decisions by health care providers to hospitalize patients, correctly diagnose work-related conditions, and/or list conditions as a discharge diagnosis.
 - Many individuals with work-related illnesses or injuries do not file for workers' compensation or fail to recognize work as the cause of their illness or injury.
 - Attribution of primary payer in hospital discharge data may not be accurate.
 - All hospital admissions are counted, including multiple admissions for a single individual.
- Data between states may not be comparable due to differences in states' workers' compensation programs. Pneumoconiosis are typically chronic diseases of long latency (pre-clinical period). Furthermore, current incidence is not necessarily indicative of current exposure. Therefore, it may be many years before reductions in occupational exposures affect hospitalizations.