

Please post

HEALTH ALERT

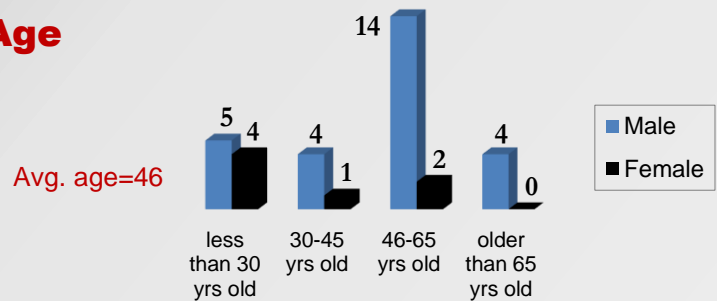
Lead Poisoning in New Jersey Firing Range Workers

From January to October 2017, the New Jersey Department of Health confirmed **34** indoor firing range workers with blood lead levels considered unsafe for adults. The average blood lead level in the U.S. is about 1.2 micrograms per deciliter ($\mu\text{g}/\text{dL}$) for all adults. The average blood lead level of the 34 workers was 33.7 $\mu\text{g}/\text{dL}$. Lead is a health hazard to both the workers and their families, especially to young children, when lead is brought home on their skin and clothing.

34 workers



Age



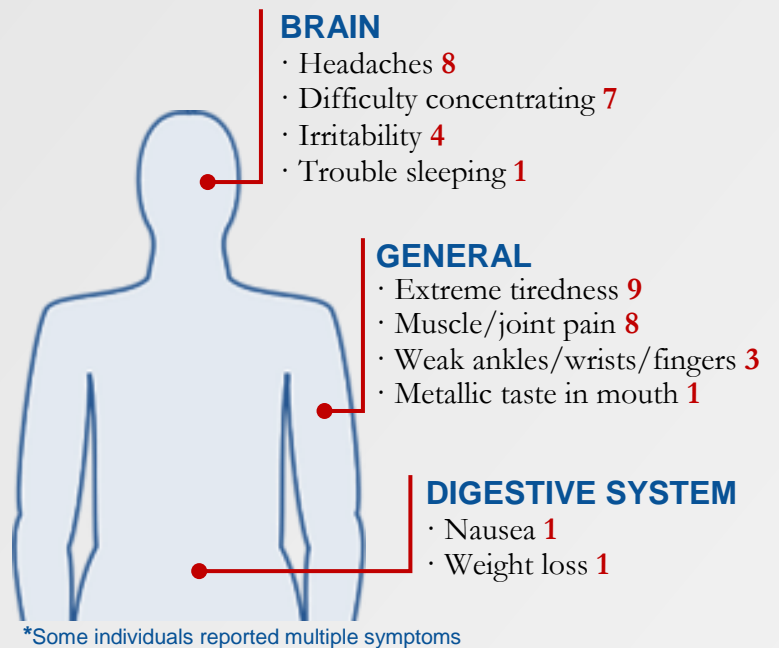
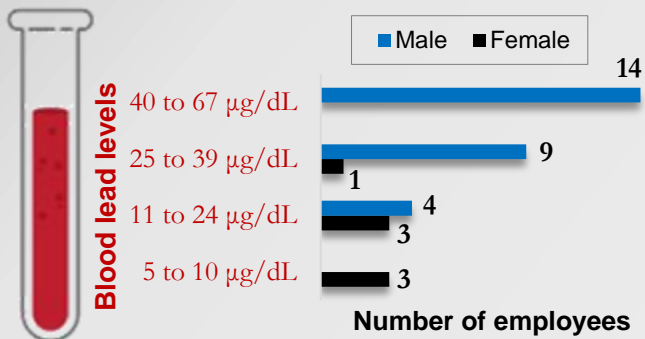
Types of jobs

The 34 range workers held various types of jobs including: maintenance, range safety officers, owners/operators, instructors, range masters, and sales representatives.

14 of the 34 workers reported symptoms*

Blood lead levels

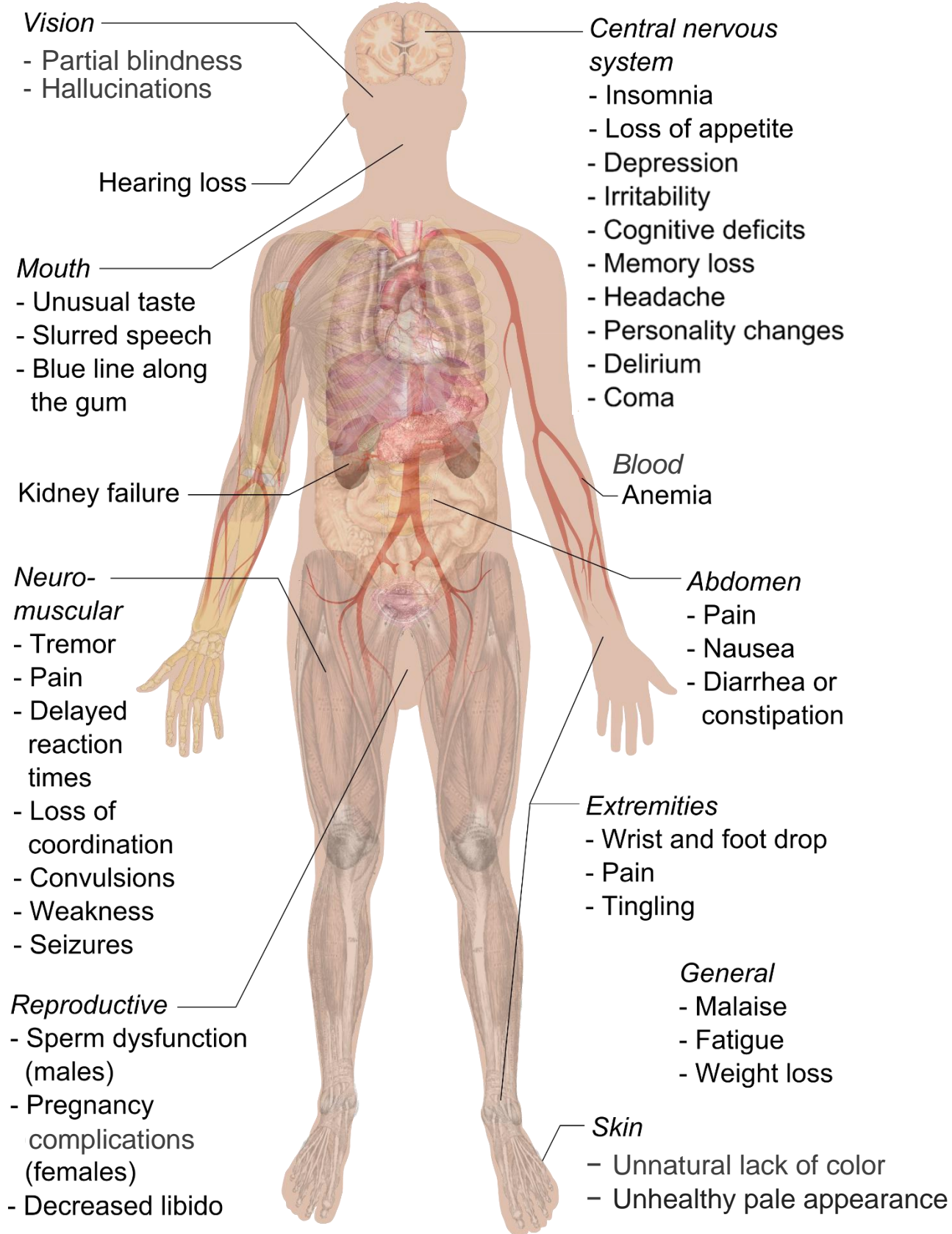
Blood lead levels ranged from 5-67 $\mu\text{g}/\text{dL}$. The Centers for Disease Control (CDC) defines an elevated blood lead level for adults as equal to or higher than 5 $\mu\text{g}/\text{dL}$.



A blood test measures lead in the blood stream and is the most reliable way to know that a worker has been exposed to lead.

NOTE: A worker can have symptoms (see back page for other types of lead poisoning symptoms) at lower blood lead levels or have no symptoms even at higher levels. Some lead poisoning symptoms may be confused with common aches and pains. Getting a blood lead test can rule out lead poisoning.

Symptoms of Lead poisoning[†]



[†]U.S. Department of Health and Human Services [2007] Toxicological profile for Lead (update) [<http://www.atsdr.cdc.gov/toxprofiles/tp13.pdf>]
Public Health Service Agency for Toxic Substances and Disease Registry