

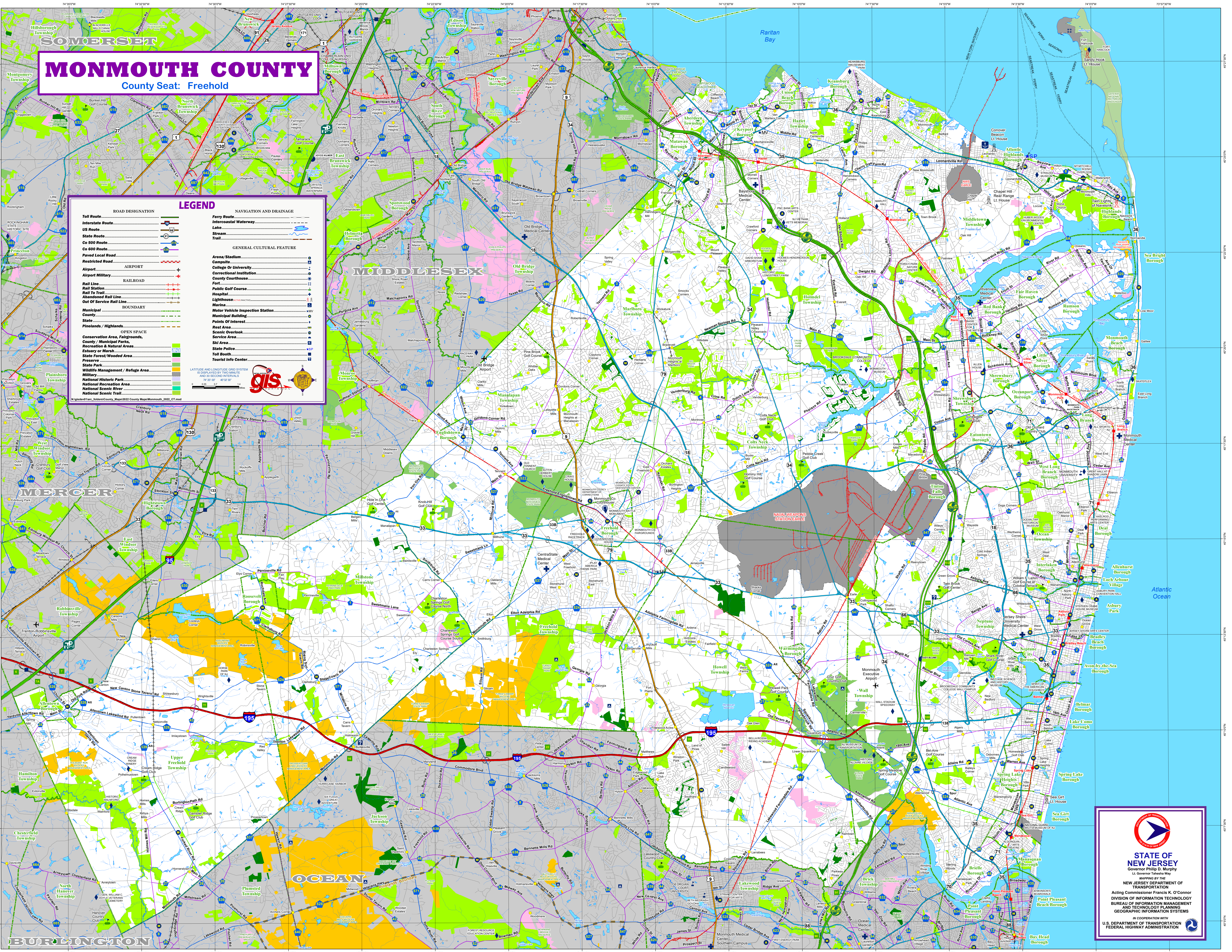
MONMOUTH COUNTY

County Seat: Freehold

LEGEND

ROAD DESIGNATION		NAVIGATION AND DRAINAGE	
Toll Route		Ferry Route	
Interstate Route		Intercoastal Waterway	
US Route		Lake	
State Route		Stream	
Co 900 Route		Trail	
Co 600 Route			
Restricted Road		GENERAL CULTURAL FEATURE	
Airport		Arena/Stadium	
Airport Military		Campus	
Rail Line		College Or University	
Rail Station		Correctional Institution	
Rail To Trail		County Courthouse	
Abandoned Rail Line		Fort	
Out Of Service Rail Line		Public Golf Course	
Municipal		Hospital	
County		Lighthouse	
State		Marina	
Plainslands / Highlands		Motor Vehicle Inspection Station	
Conservation Area, Fairgrounds, County / Municipal Parks, Recreation & Natural Areas		Points Of Interest	
Estuary or Marsh		Rest Area	
State Forest / Wooded Area		Scenic Overlook	
Preserve		Service Area	
State Park		Ski Area	
Wildlife Management / Refuge Area		State Police	
Millery		Toll Booth	
National Historic Park		Tourist Info Center	
National Recreation Area			
National Scenic River			
National Scenic Trail			

LATITUDE AND LONGITUDE GRID SYSTEM IS DISPLAYED BY TWO MINUTE AND 30 SECOND INTERVALS.
74 30' 00" W 40 32' 30" N



STATE OF NEW JERSEY
Governor Philip D. Murphy
Lt. Governor Tashia Way

MAPPING BY THE
NEW JERSEY DEPARTMENT OF TRANSPORTATION

Acting Commissioner Francis K. O'Connor
DIVISION OF INFORMATION TECHNOLOGY
BUREAU OF INFORMATION MANAGEMENT
AND TECHNOLOGY PLANNING
GEOGRAPHIC INFORMATION SYSTEMS

IN COOPERATION WITH
U.S. DEPARTMENT OF TRANSPORTATION
FEDERAL HIGHWAY ADMINISTRATION