

Summaries of Revenues, Expenditures and Fund Balances

This section provides an overview of the major revenue assumptions incorporated in the Governor's Budget recommendations. The tables included in this section highlight the State's major revenue sources, such as the income tax, sales tax, corporate tax, etc. and provide projections for the upcoming fiscal year.



REVENUES & EXPENDITURES

SUMMARIES OF REVENUES, EXPENDITURES AND FUND BALANCES

The basis of budgeting in New Jersey is in accordance with generally accepted accounting principles (GAAP) as it applies to fund financial statements prescribed by the Governmental Accounting Standards Board (GASB) with certain exceptions. GAAP is the same basis utilized in the preparation of the fund financial statements section of the State's audited Comprehensive Annual Financial Report. In accordance with this basis, revenues are estimated and recognized when they can be accrued; that is, when they become both measurable and available to finance expenditures of the fiscal period. Appropriations are recommended at a level sufficient to recognize all accrued expenditures applicable to the fiscal period. Goods and services delivered during a fiscal period are accrued as expenditures if not actually paid for by year end. Note that the use of the term "expended" to report the most recent actual year activity in this budget is not in strict accordance with GAAP, in that this amount includes encumbrances which under GAAP are reservations of fund balance. In addition, under GAAP certain grants and other financial assistance programs are required to be recorded as revenues and expenditures but are not part of the budget.

The schedules and exhibits contained in this section provide both summary and detailed financial information for all funds maintained by the State. Individual funds are grouped into one of the following categories--General State Funds, Special Revenue, Capital Projects, Proprietary, and Private Purpose Trust Funds.

GENERAL STATE FUNDS include the General Fund, Property Tax Relief Fund, Casino Revenue Fund, Casino Control Fund, and gubernatorial Elections Fund.

The General Fund is the fund into which all State revenues, not otherwise restricted by statute, are deposited and from which appropriations are made. The largest part of the total financial operations of the State is accounted for in the General Fund. Revenues received from most taxes, federal revenues, and certain miscellaneous revenue items are recorded in the General Fund.

The Property Tax Relief Fund accounts for revenues from the New Jersey Gross Income Tax. Revenues realized from the Gross Income Tax are dedicated by the State Constitution. All receipts from taxes levied on personal income of

individuals, estates, and trusts must be appropriated exclusively for the purpose of reducing or offsetting property taxes. Annual appropriations are made from the fund, pursuant to formulae established by the Legislature, to individuals, counties, municipalities, and school districts.

The Casino Revenue Fund accounts for the taxes imposed on the casinos and other related activities. Appropriations from this fund must be used for reductions in property taxes, utility charges and other specified expenses of eligible senior and disabled citizens.

The Casino Control Fund accounts for fees from the issuance and annual renewal of casino licenses, work permit fees, and other license fees. Appropriations are made to fund the operations of the Casino Control Commission and the Division of Gaming Enforcement.

The Gubernatorial Elections Fund is used to account for receipts from the one dollar designations on New Jersey Gross Income Tax returns. When indicated by the taxpayer, one dollar of the tax is reserved from gross income tax revenues (Property Tax Relief Fund) and credited to the Gubernatorial Elections Fund. These funds are available for appropriations pursuant to the New Jersey Campaign Contributions and Expenditures Reporting Act, as amended.

SPECIAL REVENUE FUNDS account for resources legally restricted to expenditure for specified current operating purposes. (While the Property Tax Relief, Casino Revenue, Casino Control, and Gubernatorial Elections Funds actually fall into this category, they are included under General State Funds as they make up an integral portion of the State's Annual Budget).

CAPITAL PROJECTS FUNDS account for financial resources used for the acquisition or construction of major capital facilities for State use.

PROPRIETARY FUNDS are used to report any activity for which a fee is charged to external users for goods and services. Activities are required to be reported as proprietary funds if laws or regulations require that the activity's cost of providing services be recovered with fees and charges.

PRIVATE PURPOSE TRUST FUNDS account for all trust fund arrangements for which principal and income benefit individuals, private organizations, or other governments.

COMBINED SUMMARY—ALL FUNDS REVENUES, EXPENDITURES AND FUND BALANCES (thousands of dollars)

	-----Fiscal Years Ending June 30-----		
	2004 Actual	2005 Estimated	2006 Estimated
Beginning Balances July 1			
General State Funds	\$1,243,903	\$2,006,106	\$1,542,979
Special Revenue, Capital Projects, Proprietary, and Private Purpose Trust Funds	6,948,829	4,952,490	4,565,014
<i>Total Beginning Balances</i>	<i>8,192,732</i>	<i>6,958,596</i>	<i>6,107,993</i>
Revenues			
General State Funds	37,471,743	40,114,708	40,756,015
Special Revenue, Capital Projects, Proprietary, and Private Purpose Trust Funds	6,073,905	5,975,795	6,421,475
<i>Total</i>	<i>43,545,648</i>	<i>46,090,503</i>	<i>47,177,490</i>
<i>Less: Interfund Transfers</i>	<i>3,286,938</i>	<i>3,839,599</i>	<i>1,945,432</i>
<i>Net Revenues</i>	<i>40,258,710</i>	<i>42,250,904</i>	<i>45,232,058</i>
Other Adjustments			
General State Funds	2,432	640,710	---
Special Revenue, Capital Projects, Proprietary, and Private Purpose Trust Funds	221,688	2,391,268	127,200
<i>Total Other Adjustments</i>	<i>224,120</i>	<i>3,031,978</i>	<i>127,200</i>
<i>Net Available</i>	<i>48,675,562</i>	<i>52,241,478</i>	<i>51,467,251</i>
Expenditures			
General State Funds	36,711,972	41,218,545	40,755,240
Special Revenue, Capital Projects, Proprietary, and Private Purpose Trust Funds	5,151,585	5,343,948	5,052,303
<i>Total</i>	<i>41,863,557</i>	<i>46,562,493</i>	<i>45,807,543</i>
<i>Less: Interfund Transfers</i>	<i>146,591</i>	<i>429,008</i>	<i>932,052</i>
<i>Net Expenditures</i>	<i>41,716,966</i>	<i>46,133,485</i>	<i>44,875,491</i>
Ending Balances June 30			
General State Funds	2,006,106	1,542,979	1,543,754
Special Revenue, Capital Projects, Proprietary, and Private Purpose Trust Funds	4,952,490	4,565,014	5,048,006
<i>Total Ending Balances</i>	<i>\$6,958,596</i>	<i>\$6,107,993</i>	<i>\$6,591,760</i>

REVENUES & EXPENDITURES

SUMMARY ESTIMATED REVENUES, EXPENDITURES AND FUND BALANCES (thousands of dollars)

	----- Fiscal Year Ending June 30 -----	
	2005	2006
	<u>Estimated</u>	<u>Estimated</u>
Beginning Balances July 1		
Undesignated Fund Balances		
General Fund	\$ 376,502	\$ 111,584
Surplus Revenue Fund	282,416	288,416
Property Tax Relief Fund	175,264	---
Gubernatorial Elections Fund	1,310	---
Casino Control Fund	4,888	---
Casino Revenue Fund	22,747	---
<i>Total Undesignated Fund Balances</i>	<u>863,127</u>	<u>400,000</u>
State Revenues		
General Fund	17,688,357	17,204,752
Property Tax Relief Fund	9,055,000	9,650,000
Gubernatorial Elections Fund	1,500	1,500
Casino Control Fund	69,585	69,585
Casino Revenue Fund	482,150	487,204
<i>Total State Revenues</i>	<u>27,296,592</u>	<u>27,413,041</u>
Other Adjustments		
General Fund		
Balances lapsed	479,533	---
From/(To) Property Tax Relief Fund	422,189	---
From/(To) Gubernatorial Elections Fund	(6,060)	---
From/(To) Casino Revenue Fund	---	---
From/(To) Casino Control Fund	5,188	---
From/(To) Surplus Revenue Fund	(6,000)	---
Property Tax Relief Fund		
From/(To) General Fund	(422,189)	---
Balances lapsed	161,177	---
Gubernatorial Elections Fund		
From/(To) General Fund	6,060	---
Casino Revenue Fund		
From/(To) General Fund	---	---
Casino Control Fund		
From/(To) General Fund	(5,188)	---
Surplus Revenue Fund		
From/(To) General Fund	6,000	---
<i>Total Other Adjustments</i>	<u>640,710</u>	<u>---</u>
<i>Total Available</i>	<u>28,800,429</u>	<u>27,813,041</u>
Appropriations		
General Fund	18,848,125	17,204,752
Property Tax Relief Fund	8,969,252	9,650,000
Gubernatorial Elections Fund	8,870	1,025
Casino Control Fund	69,285	69,285
Casino Revenue Fund	504,897	487,204
<i>Total Appropriations</i>	<u>28,400,429</u>	<u>27,412,266</u>
Ending Balances June 30		
Undesignated Fund Balances		
General Fund	111,584	111,584
Surplus Revenue Fund	288,416	288,416
Property Tax Relief Fund	---	---
Gubernatorial Elections Fund	---	475
Casino Control Fund	---	300
Casino Revenue Fund	---	---
<i>Total Undesignated Fund Balances</i>	<u>\$ 400,000</u>	<u>\$ 400,775</u>

FISCAL 2005 ANTICIPATED REVENUE

The current estimate of \$27.3 billion in total fiscal 2005 revenue is \$304.1 million less than when the Governor certified revenues in June 2004.

The three largest taxes, Gross Income, Sales and Use, and Corporation Business account for about 65% of total State revenues and are now forecast to yield \$17.7 billion. This represents a decrease of \$218.0 million over certified revenues, reflecting the following revisions (+/-) in the estimates for: the Gross Income Tax (+\$200 million), due to strong estimated payment collections in association with the millionaires' tax and more favorable wage growth in the economic assumptions; the Sales Tax (-\$80 million) since year-to-date collections are down, which may reflect the slowing down in business purchase of capital goods due to the end of the acceleration provision in 2004; and the Corporation Business Tax (-\$338 million), based on declining year-to-date collections, which is probably being driven by the phase-in of net operating loss deductions.

The Gross Income Tax forecast for fiscal 2005 is revised up to \$9.1 billion, an increase of \$200 million compared to the June 2004 certified revenue estimate. This represents an increase in growth of 22.4% rather than the 19.7% growth anticipated in June 2004. This was mainly driven by solid double-digit growth of over 48%, compared to the 41% anticipated rate, in year-to-date estimated payments associated with the millionaires' tax and the generally improving stock market conditions. Employer withholdings grew by 8.6% in calendar year 2004, above the 5.3% growth in 2003. The overall momentum of economic recovery during calendar year 2004 when New Jersey added 75,400 jobs along with maintaining a state unemployment rate consistently below the national rate has helped the growth in income tax collections. Fiscal 2005 marks the first time that the Gross Income Tax base revenue will exceed the fiscal 2001 revenue level.

The Sales and Use Tax is estimated to generate \$6.5 billion in fiscal 2005, a 4.6% growth compared to the 5.9% rate originally projected. The estimate was decreased with mixed reports of 2004 holiday sales, reflecting the influence of Internet sales and gift card purchases. Consumer confidence remained mixed in 2004 with the index increasing by only 5 points between

January and December of last year, after an impressive 13 point gain during the same period in 2003.

The Corporation Business Tax (CBT) is estimated to generate \$2.2 billion in fiscal 2005, which is \$338 million below the original estimate of \$2.5 billion. The downward revision in the CBT estimate is in line with the declining year-to-date collections trend. The phase in of the net operating loss deductions, which began in 2004, and the presence of alternative minimum assessment credits against CBT liability are forces offsetting any growth potential in CBT revenues due to business recovery.

FISCAL 2006 REVENUE PROJECTIONS

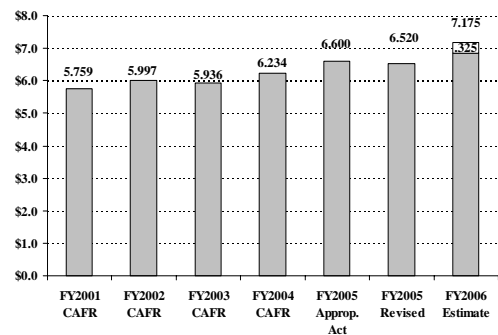
Total revenues for fiscal 2006 are expected to be \$27.4 billion, \$116.4 million above the revised fiscal 2005 anticipation, and include new revenue actions of \$1.3 billion. Revenues are expected to grow moderately in fiscal 2006 as the economic recovery nationwide and in New Jersey continues to firm up. Absent any of the revenue actions that have been proposed by the Acting Governor, base revenue for fiscal 2006 would have been only \$26.1 billion which is \$1.2 billion less than the total revenue in the current budget.

Sales Tax

The forecast of \$7.2 billion for fiscal 2006 Sales Tax revenues is an increase of \$655 million, which includes \$275 million for Sales Tax Modernization and \$50 million for Urban Enterprise Zone Sales. The basic underlying growth of 5.1%, compared to the revised fiscal 2005 revenues is an improvement, reflecting consistent strength in the underlying economic fundamentals. With an improving outlook for payroll employment and personal income growth, consumer

SALES TAX

(In Billions)



FY06 includes \$325 million in initiatives.

REVENUES & EXPENDITURES

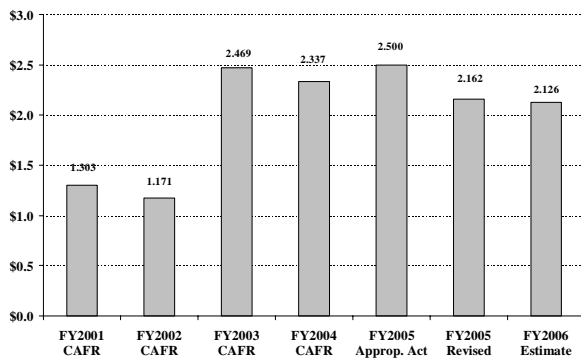
confidence and spending should keep growing at a moderate pace in 2006.

Corporation Business Tax

The fiscal 2006 CBT revenue forecast of \$2.1 billion represents a decrease of \$36 million (or 1.7%), compared with revised fiscal 2005. This downward revision assumes an increase in estimated net operating loss deductions as the phase-in is completed. Growth in refunds of 15% is also assumed in fiscal 2006.

CORPORATE BUSINESS TAX

(In Billions)



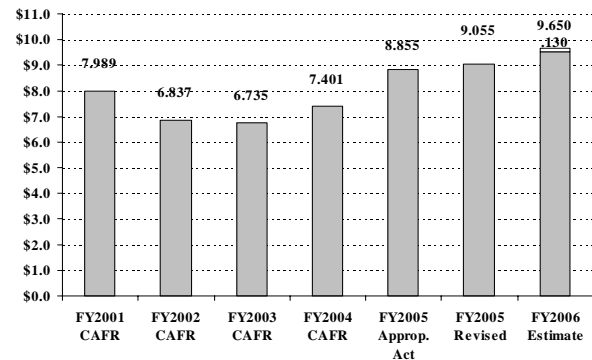
CBT excludes Energy

Gross Income Tax

The fiscal 2006 forecast of \$9.7 billion is an increase of \$595 million, including \$130 million in new initiatives. The basic underlying growth of 5.1% over revised fiscal 2005 is a reflection of the continuation of the economic turnaround that started in 2003. New Jersey Total Income, which is the tax base, is expected to increase by 5.7% in 2004, one percentage point above the year ago pace. In 2005 and 2006, the tax base is projected to grow at 6.2% and 5.9%, respectively. The growth in income for households reporting over \$100,000 in total income is expected to rebound at a 7.8% average annual rate (2003-2005) after declining at a -6.3% average annual rate during the 2001-2002 recessionary period.

GROSS INCOME TAX

(In Billions)



FY06 includes \$130 million in initiatives.

REVENUE ENHANCEMENTS

Descriptions of the major revenue enhancements proposed in the Fiscal 2006 Budget are listed below.

Asset Sales (\$500 million)

While revenue growth and spending restraints will provide significant budget relief in fiscal 2006, additional steps are necessary to bolster State revenues and close a multi-billion dollar shortfall. Just as a business does in strained budgetary circumstances, the State will examine all of its assets to determine which are still useful and productive and which assets could be sold. The State currently has \$19.4 billion in assets, including buildings, infrastructure, and land. The Fiscal 2006 Budget anticipates that various actions such as the actual sale or transfer of assets to other private entities will generate \$500 million.

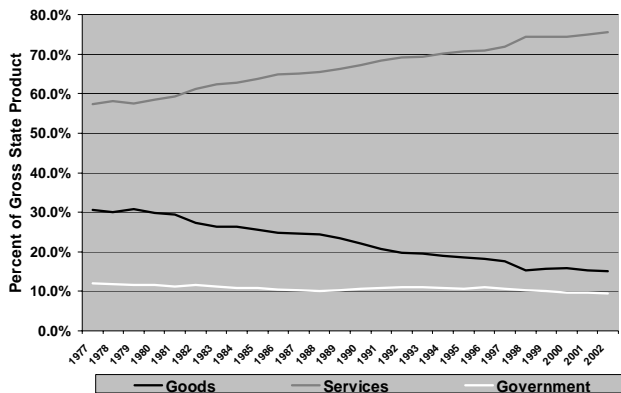
Sales Tax Modernization (\$275 million)

The Fiscal 2006 Budget proposes to modify the State sales tax to provide a more equitable tax treatment of similar products and to recognize the erosion of the sales tax base due to the impact of technology and a movement to a service economy. The proposed changes are projected to generate \$275 million in new revenue in fiscal 2006.

Since the enactment of the Sales and Use Tax Act in 1966, the nature of the State's economy has changed dramatically. Reflecting similar trends across the country, the New Jersey economy is now largely service-based. The production of goods, which formed the original foundation for the sales tax, has long since shrunk as a percentage of the economy due in large part to the gradual decline in the manufacturing sector.

This point is clearly outlined in the attached chart entitled "Gross New Jersey State Product by Industry, 1977-2002". As a percent of the total State economy, the service sector increased by 18 percentage points, from 57% in 1977 to 75% in 2002, while the manufacturing sector declined by 15 percentage points, from 30% to 15% during those years.

**Gross New Jersey State Product by Industry
1977-2002**



The rapid absorption of new technology in society has also given rise to an inequitable and inconsistent application of the sales tax. Simply, similar products are now treated much differently in a tax sense. The revenue fallout associated with these inequities has been exacerbated by the enactment of 52 sales tax exemptions.

In general, there has been relatively little expansion of the sales tax base despite fundamental changes to the underlying economy. Since the sales tax represents nearly one-quarter of the revenue used to support the State Budget (and 40% of the annual amount raised by major taxes and fees), this phenomenon is key to understanding New Jersey's ongoing structural problem. Specifically, while normal increases in population have placed greater demands on State services, the mounting, inflation-driven costs to satisfy these needs have outstripped the growth of New Jersey's primary revenue resources.

As part of the budget process, the Acting Governor proposes that an existing entity, possibly the Sales Tax

Review Commission, analyze the changes in the revenue base since 1966 as well as the effect that new technology and the shift to a service economy has had on the potential for future revenue and inequity in the treatment of similar products and services. Based on this review, recommendations will be made for changes to the sales tax law. Possible items that could be subject to tax under these reforms include shipping and handling, limousine services, luxury box rentals, charter airplane services, tanning, massages, and landscaping.

Video Lottery Terminals (\$150 million)

The Video Lottery Terminal Program represents a continuing revenue source that may generate \$150 million in additional State revenue in fiscal 2006 alone, when only 6 months of revenues are expected. A temporary facility will be established in the Meadowlands in early 2006.

Property Tax Deduction Change (\$85 million)

The existing property tax deduction for those taxpayers with income above \$200,000 will be discontinued due to budgetary constraints. As a matter of tax equity, Homestead Rebates for non-senior taxpayers earning less than \$200,000 served to offset the disproportionate benefit of the property tax deduction enjoyed by high income earners. As the Fiscal 2006 Budget proposal would suspend Homestead Rebates for non-seniors, discontinuing the property tax deduction benefit for high income New Jerseyans would maintain a measure of equity among these brackets of taxpayers. Over 1.28 million taxpayers will still be able to fully deduct their property taxes. This change, which will only impact 9.4% of those taxpayers that currently claim the deduction, will increase income tax revenues by a projected \$85 million.

Pension Exclusion Change (\$45 million)

The exclusion for up to \$20,000 in retirement income for taxpayers with over \$100,000 in income will be eliminated. Over 113,600 taxpayers will still be able to exclude this income. The change will only impact 5.7% of those taxpayers that currently use the exclusion. This change will increase income tax revenues by an estimated \$45 million.

Cable Industry – Equity Fee (\$50 million)

A 2% gross receipts tax on the cable television industry is proposed for fiscal 2006. This tax will be structured to achieve equity in consumer services offered by the telecommunications industry, which is currently subject to a patchwork of taxes that have evolved over many years.

REVENUES & EXPENDITURES

Urban Enterprise Zone Sales (\$50 million)

The State's Urban Enterprise Zone program, which was created in 1983, has successfully enabled local governments to revive dormant areas by providing a key economic stimulus. Specifically, the State sales tax is lowered within the zones from 6% to 3% and retained by the affected locality. The program now operates 32 zones in 37 municipalities, employing 155,000 people in the 7,750 businesses that participate. Collectively, the program generates more than \$18 billion in private investment. Over the past 20 years, 1,629 economic development projects totaling nearly \$525 million in Zone Assistance funds have been approved for implementation.

The Urban Enterprise Zones (UEZ) Act also allows businesses that satisfy the related statutory qualifications to make tax exempt purchases for exclusive use or consumption within the zone. In some cases, however, businesses are granted temporary status and make tax-free purchases but never comply with the statutory qualifications. Others make large, tax-free purchases and then leave the program or the zone itself, taking the assets with them.

From 1995 through 2004, the State has foregone a total of \$869 million in revenue from this provision. In fiscal 2006, it is estimated that this loophole will reduce potential revenue to the State by at least \$100 million.

The Fiscal 2006 Budget proposes to reduce this revenue loss through the following changes:

- Lower the UEZ purchase exemption from 6% to 3%;
- Require businesses to pay the full 6% tax upfront and apply to the Division of Taxation for a rebate of 3%;
- Require businesses to repay a portion of the lost revenue if they fail to meet the statutory qualifications or leave the UEZ program.

These changes will yield an estimated \$50 million in additional sales tax revenue for the Fiscal 2006 Budget.

It is important to note that these changes will not affect the municipalities' receipt of revenue from the existing 3% sales tax in any way. That revenue stream, which totals approximately \$62 million per year, will continue unabated.

Simplified Sales Tax Implementation/Amnesty (\$40 million)

Consistent with the effort of over 40 other states, it is proposed that New Jersey enact legislation establishing a simplified, streamlined sales tax structure that provides numerous benefits for both the State and the business community. The agreement includes a one year voluntary amnesty, beginning with the date that New Jersey formally joins the multi-state compact, for companies that have nexus in New Jersey but are not yet registered. Based on prior studies, this initiative is expected to generate \$40 million in new revenue in fiscal 2006.

Transfer Inheritance Tax (\$25 million)

The Fiscal 2006 Budget proposes changes in the estate tax that will generate \$25 million. These changes will be confined to those taxpayers that have received the most benefit under the federal tax changes.

Realty Transfer (\$25 million)

The Fiscal 2006 Budget proposes an increase in the realty transfer fee rate structure that adds approximately \$25 million in new revenue. The new rates will affect realty sales exempted from the fiscal 2005 fee increase. For fiscal 2005, P.L.2004, c.66, introduced a new realty transfer "general purpose" fee for all realty sales valued at \$350,000 and over, exempting sales less than \$350,000. This Budget proposes to extend that general purpose fee to sales between \$150,000 and \$350,000. Realty sales less than \$150,000 would continue to be exempt from the general purpose fee.

Specifically, the proposed fiscal 2006 rate increase would extend a general purpose fee of \$0.75/\$500 of sale value for the first \$150,000 of sale price on realty ranging from \$150,000 - \$350,000, \$0.90/\$500 of sale value for the next \$50,000 of such sales, and \$0.85/\$500 of sale value for the last \$150,000 of such sales. This proposed rate structure is less than the current general purpose fee structure for sales of \$350,000 or more.

Realty transfer fees have several components. Portions of realty transfer fees are retained by counties, portions support the Neighborhood Preservation Fair Housing Fund and the Shore Protection Fund, and a portion, including the general purpose fee component, is deposited in the General Fund. Currently, a \$250,000 home sale pays about \$1,300 total in realty transfer fees. A \$500,000 home sale pays nearly \$4,200 in total realty transfer fees. The proposed fiscal 2006 change would increase the fees paid on the \$250,000 home by \$400, to

REVENUES & EXPENDITURES

\$1,700. It would have no impact on the \$500,000 sale, or on any sales \$350,000 and higher.

Fines Amnesty (\$15 million)

Similar to the successful tax amnesty program in 2002, the Fiscal 2006 Budget assumes \$15 million from an amnesty program for delinquent fines, fees and

assessments. Individuals and business have significant balances due to the State for various fees, fines and assessments throughout all departments of State government. This amnesty program will allow for the waiving of interest for those delinquent individual and businesses that satisfy their obligations during a certain time period.

REVENUES & EXPENDITURES

STATEMENT OF ESTIMATED REVENUES AND EXPENDITURES

A description of the major categories of anticipated revenue sources within the five funds and a description of the principal taxes are discussed in the following.

GENERAL FUND

Major Taxes

The Major Taxes category is composed of thirteen taxes or fees which are levied within the State. The majority of the revenue is generated from the sale and use of goods and services; general business taxes, which are received from various corporations; motor vehicle fees; and other excise taxes. A description of principal sources, all raising more than \$200 million, follows:

The Sales and Use Tax Act imposes a tax at the rate of 6 percent on receipts from retail sale, rental or use of tangible personal property; retail sale of producing, fabricating, processing, installing, maintaining, repairing, storing and servicing tangible personal property; certain advertising services; sales of restaurant meals; rental of hotel and motel rooms; telecommunications; alcohol; cigarettes; non-prescription drugs; soaps and detergents; disposable paper products; and certain admission charges. Sales of food, clothing, and personal and business services not specifically enumerated in the law are exempt.

The Corporation Business Tax imposes a franchise tax for the privilege of having or exercising a corporate charter or doing business, employing or owning capital or property, or maintaining an office in New Jersey. The corporate tax or alternative minimum assessment is applicable to every corporation not expressly exempted.

The Motor Fuels Tax applies to sales of gasoline, diesel fuel, or liquified petroleum gas and compressed natural gas used in motor vehicles on public highways. The tax is \$.105 per gallon for gasoline and \$.135 per gallon for diesel fuel, and half the gasoline rate for other gases.

The Cigarette Tax is imposed at a rate per cigarette. The tax is collected primarily from licensed distributors who receive the cigarettes directly from out-of-state manufacturers.

The Insurance Premium Tax applies to premiums collected on insurance risks by every insurance company transacting business in New Jersey. The tax base is gross contract premiums less specified deductions.

The Transfer Inheritance Tax applies to the transfer of personal property and New Jersey real property in estates. The tax rates depend on the amount received and the relationship between the decedent and the beneficiary. No tax is imposed on immediate family or spouses.

The Motor Vehicle Fees include automobile and truck registrations, drivers' licenses, and miscellaneous fees collected by the Division of Motor Vehicles.

The Petroleum Products Gross Receipts Tax is imposed on all companies engaged in the refining/distribution of petroleum products in the State. It only applies to the first sale (not exports) of petroleum products in the State.

The Realty Transfer Fee is imposed upon the recording of deeds evidencing transfers of title to real property in the State of New Jersey and is calculated based on the amount of consideration paid.

Miscellaneous Taxes, Licenses, and Other Departmental Fees

This category includes revenues received by the various State agencies. Typical items include license and inspection fees, recreation and boating fees, institutional and patient fees, investment earnings, and other similar items.

Interfund Transfers

The Interfund Transfer category includes monies which were received into various capital projects, special revenue, proprietary, and private purpose trust funds because of legal or statutory requirements, and then subsequently transferred into the General Fund as anticipated revenue for expenditure purposes. Included in these types of revenue are the monies received by the State Lottery and interest earned on investment of bond funds.

PROPERTY TAX RELIEF FUND

The Gross Income Tax is a graduated tax levied on gross income earned or received by New Jersey resident and non-resident individuals, estates and trusts. All monies in the fund must be appropriated exclusively for reducing or offsetting property taxes.

GUBERNATORIAL ELECTIONS FUND

A taxpayer can voluntarily indicate that \$1 of income tax can be set aside into this special fund. Such monies are used to finance a portion of the expenses of gubernatorial primary and general elections.

CASINO REVENUE FUND

An 8 percent tax on the gross revenue of all casinos is deposited into the Casino Revenue Fund. In addition, there are five other taxes/fees imposed as follows: Casino Net Income Tax, Casino Complimentary Tax, Casino Room Fee, Progressive Slot Tax, and Casino Parking Tax. All monies in this fund must be used for reduction in property taxes, and utility and rental charges of eligible disabled and senior citizens.

CASINO CONTROL FUND

License fees for the issuance of annual renewal of casino licenses, slot machines, non-refundable deposits for each application for a license, and fees for the issuance of various work permits are deposited into the Casino Control Fund. Such revenues are used to support the operation of the Casino Control Commission and the Division of Gaming Enforcement.

REVENUES & EXPENDITURES

SCHEDULE 1 STATE REVENUES (thousands of dollars)

	-----Fiscal Year Ending June 30-----		
	2004 Actual	2005 Estimated	2006 Estimated
Major Taxes			
Sales	6,261,700	6,520,000	7,175,000
Corporation Business	2,358,258	2,162,000	2,155,100
Cigarette	612,167	636,000	612,000
Motor Fuels	566,831	565,000	580,000
Transfer Inheritance	516,008	500,000	545,000
Insurance Premium	417,873	432,000	443,000
Realty Transfer	227,064	345,000	405,000
Motor Vehicle Fees	235,254	272,000	294,320
Petroleum Products Gross Receipts	216,247	250,000	255,000
Alcoholic Beverage Excise	87,357	87,000	91,000
Corporation Banks and Financial Institutions	141,432	85,000	85,000
Tobacco Products Wholesale Sales	10,345	12,000	12,000
Public Utility Excise (Reform)	9,321	9,000	9,000
<i>Total Major Taxes</i>	<u>11,659,857</u>	<u>11,875,000</u>	<u>12,661,420</u>
Miscellaneous Taxes, Fees, Revenues			
Executive Branch--			
Department of Agriculture:			
Animal Health - Laboratory Test Fees	154	---	---
Environmental Services	289	---	---
Fertilizer Inspection Fees	506	291	366
Milk Control Licenses and Fees	710	---	---
Miscellaneous Revenue	353	4	4
	<u>2,012</u>	<u>295</u>	<u>370</u>
Department of Banking and Insurance:			
Actuarial Services	46	54	54
Bank Assessments	3,685	3,800	3,700
Banking - Examination Fees	2,300	2,260	2,300
Banking - Licenses and Other Fees	12,265	6,600	7,200
FAIR Act Administration	16,863	15,000	15,000
Fraud Fines	1,955	2,000	2,000
Insurance - Special Purpose Assessment	14,969	16,500	16,500
Insurance Examination Billings	1,750	2,200	2,300
Insurance Fraud Prevention	33,240	35,000	34,000
Insurance Licenses and Other Fees	12,087	12,530	12,530
Public Adjusters Licenses	46	---	---
Real Estate Commission	10,318	6,500	6,500
	<u>109,524</u>	<u>102,444</u>	<u>102,084</u>
Department of Community Affairs:			
Affordable Housing and Neighborhood Preservation - Fair Housing	19,439	20,003	20,003
Boarding Home Fees	515	---	---
Construction Fees	18,191	12,766	12,766
Divorce Filing Fees	1,265	1,276	1,276
Fire Safety	23,232	15,039	15,039
Housing Inspection Fees	9,599	7,806	7,806
Miscellaneous Revenue	82	---	---
NJ Meadowlands Commission	3,637	---	---
Planned Real Estate Development Fees	2,339	828	828
Truth In Renting	180	---	---
	<u>78,479</u>	<u>57,718</u>	<u>57,718</u>
Department of Corrections:			
Miscellaneous Revenue	5	---	---

REVENUES & EXPENDITURES

SCHEDULE 1 STATE REVENUES (thousands of dollars)

	-----Fiscal Year Ending June 30-----		
	2004	2005	2006
	Actual	Estimated	Estimated
Department of Education:			
Audit Recoveries	690	775	775
Audit of Enrollments	1,288	1,400	1,000
Local School District Loan Recoveries-NJ Economic Development Authority	9,186	9,100	8,380
Miscellaneous Revenue	116	50	50
Nonpublic Schools Handicapped and Auxiliary Recoveries	12,809	---	---
Nonpublic Schools Textbook Recoveries	1,523	1,450	1,500
School Construction Inspection Fees	3,519	3,246	3,246
State Board of Examiners	3,344	3,971	3,125
	<u>32,475</u>	<u>19,992</u>	<u>18,076</u>
Department of Environmental Protection:			
Air Pollution Fees - Minor Sources	3,784	4,000	4,000
Air Pollution Fees - Title V Operating Permits	13,501	11,650	14,750
Air Pollution Fines	5,628	3,500	3,500
Clean Water Enforcement Act	2,157	2,000	2,300
Coastal Area Development Review Act	1,667	1,750	1,750
Endangered Species Tax Checkoff	258	279	235
Environmental Infrastructure Financing Program-Administrative Fee	5,000	5,000	5,000
Excess Diversion	328	283	283
Freshwater Wetlands Fees	3,568	3,060	3,060
Freshwater Wetlands Fines	97	300	300
Hazardous Discharge Site Cleanup	8,843	---	---
Hazardous Waste Fees	2,437	2,107	2,580
Hazardous Waste Fines	984	400	400
Highlands Permitting	---	1,558	2,166
Hunters' and Anglers' Licenses	12,162	12,500	12,500
Industrial Site Recovery Act	1,209	1,000	1,000
Laboratory Certification Fees	791	780	780
Laboratory Certification Fines	13	20	20
Marina Rentals	1,335	885	885
Marine Lands - Preparation and Filing Fees	1,871	170	170
Medical Waste	4,080	3,800	3,800
Miscellaneous Revenue	2	11	11
New Jersey Pollutant Discharge Elimination System/Stormwater Permits	12,156	12,100	12,100
New Jersey Spill Compensation Fund	2,955	---	---
Parks Management Fees and Permits	5,249	4,300	4,300
Parks Management Fines	161	160	160
Pesticide Control Fees	4,278	4,200	4,200
Pesticide Control Fines	59	50	50
Pollution Prevention Fund	263	---	---
Radiation Protection Fees	3,326	4,400	3,700
Radiation Protection Fines	88	88	88
Radon Testers Certification	238	240	240
Safe Drinking Water Fund	864	---	---
Shellfish and Marine Fisheries	10	7	7
Solid Waste - Utility Regulation Assessments	3,207	3,100	3,100
Solid Waste Fines - DEP	578	500	700
Solid Waste Management Fees - DEP	4,569	11,697	8,212
Solid and Hazardous Waste Disclosure	2,979	---	---
Spring Meadow Golf Course	300	300	300
Stormwater Permits	2,995	4,800	4,800
Stream Encroachment	1,717	1,720	1,720
Toxic Catastrophe Prevention Fees	1,237	1,550	1,550
Toxic Catastrophe Prevention Fines	69	40	40
Treatment Works Approval	1,629	1,969	2,073
Underground Storage Tanks Fees	1,062	1,000	1,000
Water Allocation	3,197	2,050	2,050
Water Supply Fund	20	---	---
Water Supply Management Regulations	1,530	1,387	1,390
Water/Wastewater Operators Licenses	215	215	215
Waterfront Development Fees	2,017	2,200	2,200
Waterfront Development Fines	116	10	10
Well Permits/Well Drillers/Pump Installers Licenses	982	1,100	1,080
Wetlands	24	24	24
Worker Community Right to Know - Fines	15	20	20
	<u>127,820</u>	<u>114,280</u>	<u>114,819</u>

REVENUES & EXPENDITURES

SCHEDULE 1 STATE REVENUES (thousands of dollars)

	-----Fiscal Year Ending June 30-----		
	2004	2005	2006
	Actual	Estimated	Estimated
Department of Health and Senior Services:			
Admission Charge Hospital Assessment	6,000	6,000	6,000
Clinical Laboratory	563	---	---
Consumer Health Penalties	4,287	---	---
HMO Covered Lives	1,739	2,600	2,600
Health Care Reform	1,200	1,200	1,200
Licenses, Fines, Permits, Penalties & Fees	3,491	790	790
Miscellaneous Revenue	1,197	400	400
Pharmaceutical Assistance to the Aged - Recoveries	4,029	---	---
	22,506	10,990	10,990
Department of Human Services:			
Child Care Licensing/Adoption Law	337	350	350
Commission for the Blind - Miscellaneous	594	---	---
Early Periodic Screening, Diagnosis and Treatment	16,208	4,000	4,000
Interim Assistance	385	---	---
Marriage License Fees	1,266	1,450	1,450
Medicaid Uncompensated Care - Acute	305,035	223,650	254,355
Medicaid Uncompensated Care - Mental Health	32,414	34,186	33,055
Medicaid Uncompensated Care - Psychiatric	171,088	182,446	178,685
Medical Assistance - Recoveries	19,748	---	---
Medical Assistance-Federal Match on PAAD/Medicaid Dual Eligibles	228	2,200	2,200
Miscellaneous Revenue	787	48,500	5,500
Patients' and Residents' Cost Recovery - Developmental Disability	14,779	16,221	16,221
Patients' and Residents' Cost Recovery - Psychiatric Hospitals	74,832	58,767	59,600
Payments for Medical Assistance Recipients - Prescription Drugs	197,038	---	---
Purchased Institutional Care	3,828	---	---
School Based Medicaid	17,564	19,000	16,126
	856,131	590,770	571,542
Department of Labor and Workforce Development:			
Special Compensation Fund	2,012	1,685	1,685
State Disability Benefits Fund	6,898	---	---
Urban Enterprise Zone Administration Cost	25	---	---
Workers' Compensation Assessment	18,159	12,130	12,130
Workforce Development	16,651	---	---
Workplace Standards - Licenses, Permits and Fines	8,895	2,820	2,820
	52,640	16,635	16,635
Department of Law and Public Safety:			
Authorities Recruit Class Reimbursement	---	2,500	2,500
Beverage Licenses	8,736	3,960	3,960
Charities Registration Section	1,355	695	695
Consumer Affairs	7,524	---	---
Controlled Dangerous Substances	789	100	100
Criminal Disposition	465	---	---
EDA School Construction Recoveries	823	800	800
General Client Services	29,424	---	---
Legal Services	22,228	---	---
Legalized Games of Chance Control	1,216	1,200	1,200
Miscellaneous Revenue	419	---	400
New Jersey Cemetery Board	203	132	120
Pleasure Boat Licenses	3,028	3,000	3,000
Private Employment Agencies	687	258	258
Retired Officer Handgun Permit	215	---	---
Safe & Secure Receipts	276	---	---
Securities Enforcement	19,778	8,994	7,794
State Board of Architects	841	480	450
State Board of Audiology and Speech-Language Pathology Advisory	422	25	270
State Board of Certified Psychoanalysts	---	50	50
State Board of Certified Public Accountants	575	176	1,425
State Board of Chiropractors	1,025	240	675
State Board of Cosmetology and Hairstyling	2,877	2,680	625
State Board of Dentistry	3,182	280	1,415
State Board of Electrical Contractors	437	40	1,200

REVENUES & EXPENDITURES

SCHEDULE 1 STATE REVENUES (thousands of dollars)

	-----Fiscal Year Ending June 30-----		
	2004 Actual	2005 Estimated	2006 Estimated
State Board of Marriage Counselor Examiners	338	400	150
State Board of Master Plumbers	181	640	75
State Board of Medical Examiners	3,741	4,400	2,125
State Board of Mortuary Science	572	320	300
State Board of Nursing	6,804	3,900	3,750
State Board of Occupational Therapists and Assistants	639	60	375
State Board of Ophthalmic Dispensers and Ophthalmic Technicians	441	48	270
State Board of Optometrists	76	400	30
State Board of Orthotics and Prosthetics	51	80	31
State Board of Pharmacy	1,136	760	300
State Board of Physical Therapy	1,051	120	600
State Board of Professional Engineers and Land Surveyors	1,857	360	1,050
State Board of Professional Planners	456	40	45
State Board of Psychological Examiners	217	180	75
State Board of Real Estate Appraisers	1,623	120	1,050
State Board of Respiratory Care	420	25	150
State Board of Shorthand Reporting	130	25	75
State Board of Social Workers	740	700	300
State Board of Veterinary Medical Examiners	183	360	60
State Police - Fingerprint Fees	11,871	2,694	2,694
State Police - Other Licenses	229	230	230
State Police - Private Detective Licenses	472	220	220
State Police Recruit Training	77	---	---
Victim and Witness Advocacy Fund	1,267	---	---
Violent Crime Compensation	8,619	3,930	3,930
Weights and Measures - General	3,647	2,612	2,612
	<u>153,363</u>	<u>48,234</u>	<u>47,434</u>
Department of Military and Veterans' Affairs:			
Miscellaneous Revenue	2,173	---	---
Soldiers' Homes	29,542	29,739	29,690
	<u>31,715</u>	<u>29,739</u>	<u>29,690</u>
Department of Personnel:			
Examination Fees	2,040	---	---
Human Resource Development Institute	3,167	---	---
	<u>5,207</u>	<u>---</u>	<u>---</u>
Department of State:			
Autism Medical Research	1,387	---	---
Miscellaneous Revenue	42	---	---
	<u>1,429</u>	<u>---</u>	<u>---</u>
Department of Transportation:			
Air Safety Fund	1,841	965	965
Applications and Highway Permits	2,125	1,300	1,300
Auto Body Repair Shop Licensing	30	598	18
Autonomous Transportation Authorities	24,708	2,500	2,500
Drunk Driving Fines	369	350	350
Good Driver	76,259	71,500	71,500
Graduated Driver's License	1,381	1,385	1,390
Heavy Duty Diesel Fines	427	430	450
Interest on Purchase of Right of Way	---	5	5
Logo Sign Program Fees	443	300	300
Miscellaneous Revenue	50	200	200
Motor Vehicle Database--Automated Access	49,596	49,800	50,000
Motor Vehicle Fees	114	---	---
Motor Vehicle Inspection Fund	77,702	76,700	76,700
Outdoor Advertising	7,417	6,740	6,740
Parking Offenses	426	408	410
Photo Licensing	47	---	---
Placarded Railcar	85	---	---
Rental Receipts - Tenant Relocation Program	359	---	---

REVENUES & EXPENDITURES

SCHEDULE 1 STATE REVENUES (thousands of dollars)

	-----Fiscal Year Ending June 30-----		
	2004	2005	2006
	Actual	Estimated	Estimated
Salvage Title Program	1,071	1,100	1,100
Special Plate Fees	1,025	750	750
Uninsured Motorists Program	5,337	3,400	3,400
	250,812	218,431	218,078
Department of the Treasury:			
Assessment on Houses Greater Than \$1 Million	---	44,000	48,000
Assessments - Cable TV	3,984	4,241	4,241
Assessments - Public Utility	24,874	26,058	26,058
Asset Sales	---	---	500,000
Cable Industry Equity Fee	---	---	50,000
Casino Fines	577	---	---
Coin Operated Telephones	3,829	3,200	2,800
Commercial Recording - Expedited	3,430	2,853	2,853
Communication Fee - Lottery	438	---	---
Cost Assessment	3,881	---	---
DMV Securitization	144	---	---
Dormitory Safety Trust Fund - Debt Service Recovery	---	5,731	5,796
Equipment Leasing Fund - Debt Service Recovery	4,084	4,642	4,642
Escrow Interest - Construction Accounts	15	22	24
Fines Amnesty	---	---	15,000
General Revenue - Fees (Commercial Recording and UCC)	42,665	35,685	35,685
Higher Education Capital Improvement Fund - Debt Service Recovery	---	11,250	12,237
Hotel/Motel Occupancy Tax	80,972	65,118	65,118
Investment Earnings	18,389	---	---
Miscellaneous Revenue	3,011	853	853
NJ Economic Development Authority	22,025	2,200	1,973
NJ Public Records Preservation	---	39,000	39,000
Notary Commissions	1,314	1,100	1,100
Nuclear Emergency Response Assessment	4,011	5,067	4,139
Office of Dispute Settlement (ODS) Mediation Fees	170	158	158
Public Defender Client Receipts	4,499	4,900	4,900
Public Utility - Customer Specific Tax	1,868	1,868	1,868
Public Utility Fines	5,840	---	3,000
Public Utility Gross Receipts and Franchise Taxes (Water/Sewer)	76,849	75,000	75,000
Railroad Tax - Class II	3,660	3,100	3,100
Railroad Tax - Franchise	621	590	590
Rate Payer Advocate	6,769	6,297	6,297
Sale of Real Property	6,249	---	---
Simplified Sales Tax Implementation/Amnesty	---	---	40,000
State Disability Benefits Fund	30	---	---
Stormwater Management-Combined Sewer Overflow	1,075	---	---
Surplus Property	950	950	950
Tax Audit Services - Uncollected Revenue Recovery	266	---	---
Tax Referral Cost Recovery Fee	3,210	6,000	6,700
Telephone Assessment	---	115,000	119,000
Tire Clean-Up Surcharge	---	8,300	9,000
Transitional Energy Facilities Assessment	249,522	221,900	235,000
	579,221	695,083	1,325,082
Other Sources:			
Miscellaneous Revenue	725	500	500
Interdepartmental Accounts:			
Administration and Investment of Pension & Health Benefit Funds - Recoveries	47,031	61,300	49,500
Employee Maintenance Deductions	300	300	300
Fringe Benefit Recoveries from Colleges and Universities	104,352	118,000	120,000
Fringe Benefit Recoveries from Federal and Other Funds	156,869	194,000	198,000
Fringe Benefit Recoveries from School Districts	34,755	34,300	35,900
Indirect Cost Recoveries - DEP Other Funds	9,803	10,223	10,500
MTF Revenue Fund	90,551	86,500	87,500
Miscellaneous Revenue	30	---	---
Rent of State Building Space	1,913	1,900	1,900
Social Security Recoveries from Federal and Other Funds	52,357	55,000	56,000
Standard Offer Payments - Utilities	789	---	---
	498,750	561,523	559,600

REVENUES & EXPENDITURES

SCHEDULE 1 STATE REVENUES (thousands of dollars)

	-----Fiscal Year Ending June 30-----		
	2004 Actual	2005 Estimated	2006 Estimated
Judicial Branch--			
The Judiciary:			
Civil Arbitration Program	3,089	---	---
Court Fees	65,278	67,515	66,670
Court Unification County Reimbursements	2,200	---	---
Miscellaneous Revenue	337	---	---
	<u>70,904</u>	<u>67,515</u>	<u>66,670</u>
<i>Total Miscellaneous Taxes, Fees, Revenues</i>	<u>2,873,718</u>	<u>2,534,149</u>	<u>3,139,288</u>
Interfund Transfers			
Beaches and Harbor Fund	14	15	15
Cigarette Tax Securitization Fund	---	1,190,000	---
Clean Waters Fund	22	15	10
Correctional Facilities Construction Fund	6	9	8
Correctional Facilities Construction Fund of 1987	30	22	9
Cultural Centers and Historic Preservation Fund	48	50	30
Dam, Lake, Stream and Flood Control Project Fund - 2003	---	---	150
Developmental Disabilities Waiting List Reduction Fund	354	384	166
Dredging and Containment Facility Fund	269	338	338
Emergency Flood Control Fund	4	5	5
Energy Conservation Fund	1	4	15
Enterprise Zone Assistance Fund	2,505	3,164	3,673
Fund for the Support of Free Public Schools	---	890	1,680
Garden State Farmland Preservation Trust Fund	1,650	1,762	1,762
Garden State Green Acres Preservation Trust Fund	4,562	5,000	5,000
Garden State Historic Preservation Trust Fund	311	617	617
Hazardous Discharge Fund	2	3	3
Hazardous Discharge Site Cleanup Fund	2,718	12,537	9,638
Human Services Facilities Construction Fund	2	2	---
Institutional Construction Fund	7	---	---
Institutions Construction Fund	4	---	---
Jobs, Education and Competitiveness Fund	139	94	27
Judiciary Bail Fund	278	375	375
Judiciary Child Support and Paternity Fund	261	315	315
Judiciary Probation Fund	105	195	195
Judiciary Special Civil Fund	26	40	40
Judiciary Superior Court Miscellaneous Fund	59	65	65
Legal Services Fund	10,409	10,410	10,410
Medical Education Facilities Fund	520	---	---
Mortgage Assistance Fund	696	722	711
Motor Vehicle Security Responsibility Fund	3	3	3
Motor Vehicle Surcharge Securitization Fund	---	740,000	---
Mutual Workers' Compensation Security Fund	---	5,000	---
NJ Bridge Rehab. and Improvement and R.R. Right-of-Way Preservation Fund	155	98	85
Natural Resources Fund	32	46	28
New Jersey Green Acres Fund - 1983	221	250	250
New Jersey Insolvent Health Maintenance Organization Assistance Fund	273	---	---
New Jersey Spill Compensation Fund	14,522	14,037	15,037
New Jersey Workforce Development Partnership Fund	40,333	17,159	17,159
Pollution Prevention Fund	2,347	2,380	1,803
Public Buildings Construction Fund	5	---	---
Public Purpose Buildings Construction Fund	2	2	1
Public Purpose and Community Based Facilities Construction Fund	135	74	71
Real Estate Guaranty Fund	1,000	---	---
Safe Drinking Water Fund	2,251	2,339	2,339
School Fund Investment Account	1,516	3,532	3,532
Shore Protection Fund	190	227	223
Solid Waste Service Tax Fund	2	2	2
State Disability Benefit Fund	55,219	136,654	26,685
State Land Acquisition and Development Fund	11	6	5
State Lottery Fund	794,972	800,000	970,000
State Lottery Fund - Administration	20,614	30,400	22,400
State Recreation and Conservation Land Acquisition and Development Fund	12	13	11
State Recycling Fund	949	1,046	---
State of New Jersey Cash Management Fund	3,034	3,034	3,034
Statewide Transportation and Local Bridge Fund	3,400	2,100	---

REVENUES & EXPENDITURES

SCHEDULE 1 STATE REVENUES (thousands of dollars)

	-----Fiscal Year Ending June 30-----		
	2004 Actual	2005 Estimated	2006 Estimated
Supplemental Workforce Fund for Basic Skills	1,667	2,000	2,000
Tobacco Settlement Fund/Securitization	1,610,782	---	12,416
Transportation Rehabilitation and Improvement Fund	3	3	3
Unclaimed Insurance Payments on Deposits Trust Fund	22	30	27
Unclaimed Personal Property Trust Fund	164,760	194,075	194,075
Unclaimed Utility Deposits Trust Fund	21	25	23
Unemployment Compensation Auxiliary Fund	17,530	17,663	17,607
Universal Services Fund	72,431	72,468	72,468
Unsatisfied Claim and Judgment Fund	1,337	---	---
Wage and Hour Trust Fund	11	75	75
Water Conservation Fund	25	26	17
Water Supply Fund	3,486	3,865	3,865
Worker and Community Right to Know Fund	3,141	3,543	3,543
<i>Total Interfund Transfers</i>	<u>2,841,416</u>	<u>3,279,208</u>	<u>1,404,044</u>
<i>Total State Revenues General Fund</i>	<u>17,374,991</u>	<u>17,688,357</u>	<u>17,204,752</u>
PROPERTY TAX RELIEF FUND			
Gross Income Tax	<u>7,400,733</u>	<u>9,055,000</u>	<u>9,650,000</u>
CASINO CONTROL FUND			
Investment Earnings	185	300	300
License Fees	<u>64,461</u>	<u>69,285</u>	<u>69,285</u>
<i>Total Casino Control Fund</i>	<u>64,646</u>	<u>69,585</u>	<u>69,585</u>
CASINO REVENUE FUND			
Casino Simulcasting Fund	700	600	800
Gross Revenue Tax	377,555	392,000	400,000
Investment Earnings	79	780	780
Other Casino Taxes and Fees	89,737	88,770	85,624
PAAD Recoveries	<u>127,920</u>	---	---
<i>Total Casino Revenue Fund</i>	<u>595,991</u>	<u>482,150</u>	<u>487,204</u>
GUBERNATORIAL ELECTIONS FUND			
Taxpayers' Designations	<u>603</u>	<u>1,500</u>	<u>1,500</u>
TOTAL STATE REVENUES	<u>25,436,964</u>	<u>27,296,592</u>	<u>27,413,041</u>

REVENUES & EXPENDITURES

SCHEDULE 2 OTHER REVENUES (thousands of dollars)

-----Fiscal Year Ending June 30-----

	2004 Actual	2005 Estimated	2006 Estimated
Dedicated:			
Executive Branch--			
Chief Executive:			
State Authority Review and Oversight	1,273	1,100	1,100
Department of Agriculture:			
Administration - Development Potential Transfer Bank	74	240	400
Administrative Costs - Farmland Preservation	500	651	700
Agro-Terrorism	---	278	278
Animal Disease Control	---	153	153
Commodity Distribution	2,242	1,501	1,501
Fruit and Vegetable Grading Service	361	162	162
Future Farmers of America - Student Loans from Department of Education	100	75	75
Horse Breeding and Development Fund	407	380	380
Marketing and Development Services	---	724	724
Nursery Inspection Program	---	265	265
Organic Certification	110	300	300
Plant Pest and Disease Control	---	23	23
Poultry Service	965	810	810
Promotion/Market Development	107	---	---
Sire Stakes	4,354	4,300	5,000
Soil and Water Conservation Grants	---	---	700
Standardbred Breeder Awards	253	220	240
Stormwater Discharge Permit Fees	---	600	600
Wine Promotion Program	---	90	90
Miscellaneous	316	232	227
	9,789	11,004	12,628
Department of Banking and Insurance:			
Individual Health Care Program Assessments	1,258	7,500	6,600
Public Adjusters Licensing	---	52	52
Small Employer Health Benefits	242	380	380
Supervision and Examination of Financial Institutions	---	400	400
Miscellaneous	64	64	64
	1,564	8,396	7,496
Department of Community Affairs:			
Boarding Home Regulation and Assistance	---	750	926
Emergency Lead Poisoning Relocation Fund	1,000	---	---
Fire Certification Program	337	318	364
Grants to Displaced Homemaker Centers	697	688	688
Historic Preservation License	27	25	25
Housing Code Enforcement	---	2,824	3,458
Housing Opportunities for Persons with AIDS	974	923	923
Housing Services	51,667	51,182	51,001
Lead Hazard Control Assistance Fund Administration	---	500	500
New Home Warranty Program	3,816	4,316	4,816
New Jersey Meadowlands Commission - Operations	---	3,205	3,205
New Jersey Meadowlands Tax Sharing Stabilization Fund	---	165	279
Nine West Anti-Trust Settlement	150	---	---
Paterson Housing Opportunities for Persons with AIDS Program	476	600	600
Prevention of Homelessness	343	243	243
Truth in Renting	---	143	150
Uniform Construction Code	---	6,664	8,933
Uniform Fire Code	---	9,548	10,757
Miscellaneous	930	1,125	1,125
	60,417	83,219	87,993
Department of Corrections:			
Administration and Support Services	23,607	22,880	22,553
New Medium Security Facility	6	---	---
Workplace Literacy - Learning Lab Program	16	---	---
Miscellaneous	550	419	464
	24,179	23,299	23,017

REVENUES & EXPENDITURES

SCHEDULE 2 OTHER REVENUES (thousands of dollars)

	-----Fiscal Year Ending June 30-----		
	2004	2005	2006
	Actual	Estimated	Estimated
Department of Education:			
Abbott Implementation	---	11,892	11,586
Compliance and Auditing	38	30	30
Drug Abuse Education Fund	---	250	250
Early Childhood	---	2,280	2,610
Facilities Planning and School Building Aid	---	698	906
Katzenbach PLUS Program	865	1,122	1,090
Marie H Katzenbach School for the Deaf: Tuition-Local Boards	7,561	8,295	8,766
NJ ELITE Grant Program	76	---	---
Office of Compliance-Early Childhood Abbott Audits	---	293	272
Professional Development and Licensure	921	523	1,400
Rental of Vacant Building Space	255	489	528
State Action for Education Leadership Project	50	50	50
Utility Settlements Receipts	828	---	---
Vocational Technology Upgrade	200	200	200
Whole School Reform Finance	---	221	218
Miscellaneous	159	264	264
	10,953	26,607	28,170
Department of Environmental Protection:			
Administrative Costs - Natural Resources Damages	2,316	2,316	2,316
Administrative Costs Water Supply Bond Act of 1981 - Management	---	325	330
Administrative Costs Water Supply Bond Act of 1981 - Planning and Standards	---	28	37
Administrative Costs Water Supply Bond Act of 1981 - Watershed and Aquifer	---	50	60
Aeroflex Foundation - Kittatinny Valley State Park	20	25	25
Air Pollution Control	---	150	150
Air Pollution Fines	---	---	600
Artificial Reef Program-PSE&G/NJPDES Permit Fees	228	---	---
Battleship New Jersey Memorial Fund	247	160	160
Battleship New Jersey Tax Check-Off	50	90	50
Division of Smart Growth	---	---	20,000
Drinking Water State Revolving Fund - Capacity Development	415	452	379
Drinking Water State Revolving Fund - Delineation and Assessments	567	---	---
Drinking Water State Revolving Fund - Operator Certification	237	147	250
Drinking Water State Revolving Fund - Program Administration	1,270	1,159	679
Drinking Water State Revolving Fund - Small System Technical Assistance	584	608	297
Drinking Water State Revolving Fund - Source Water Program Administration	650	500	530
Endangered and Nongame Species of Wildlife Fund	178	235	128
Exotic and Nongame Species Inspection Fund	133	132	132
Farley Marina Escrow	257	257	257
Fish & Wildlife Field Office Projects	9	1	---
Forest Resource Management Special Revenue	239	200	200
Geraldine R. Dodge Foundation	150	---	---
Hazardous Discharge Site Cleanup Fund- Responsible Party	---	10,496	9,362
Hudson Walkway Settlement - Clermont Cove	168	---	---
Land Use Fines	---	---	600
Landscape Irrigation Contractor Certification	63	45	51
Liberty State Park - Central Parking	502	457	457
Liberty State Park EDA	3,500	---	---
Liberty State Park License Plates	82	75	75
Mammography Quality Standards Act	280	287	268
New Jersey Waterfowl Stamp Act	132	131	100
Nuclear Emergency Response	---	---	1,094
Office of Dredging and Sediment Technology	---	225	247
Oil Spill Prevention	---	1,144	1,248
PSE&G Delaware River Striped Bass Recruitment Study	62	27	20
Palisades Interstate Park Commission (PIPC) - Court Fund Revenue	---	497	498
Palisades Interstate Park Commission (PIPC) - Gas Station Revenue	---	2,240	2,230
Palisades Interstate Park Commission (PIPC) - Operating Fund Revenue	---	990	1,000
Parks Management Fees	---	1,100	1,200
Parks Management Revolving Fund	1,939	693	800
Private Well Testing - Safe Drinking Water Fund	387	800	800
Recycling of Solid Waste	---	266	---
Remediation Management and Response	---	5,885	6,539
Safe Drinking Water Fund	---	1,298	---
Sedge Island	25	10	13
Shellfish Enforcement	187	130	130

REVENUES & EXPENDITURES

SCHEDULE 2 OTHER REVENUES (thousands of dollars)

	-----Fiscal Year Ending June 30-----		
	2004	2005	2006
	Actual	Estimated	Estimated
Shellfish Management	83	72	18
Shore Protection Fund Projects	1,390	6,250	6,250
Shore Protection License Plates	1,131	1,000	985
Solid Waste Utility Regulation Excess Receipts	---	600	600
Spring Meadow Golf Course	915	950	1,042
State Public Water System Supervision Program	315	312	717
State Revolving Fund - Administrative Costs	2,675	2,400	2,363
Teterboro Airport Air Quality Study	150	---	---
Tidelands Peak Demands	---	2,265	2,495
Urban Forest Energy Efficiency Initiative	3,900	1,986	4,957
Water Allocation	---	2,900	4,700
Water Pollution Fines	---	---	300
William Penn Foundation	50	---	---
Worker and Community Right to Know Act	---	210	245
Miscellaneous	1,461	1,105	1,134
	<u>26,947</u>	<u>53,681</u>	<u>79,118</u>
Department of Health and Senior Services:			
AIDS Drug Distribution Program Rebates	13,599	8,000	22,600
Administrative Overhead - Non State Program	1,162	1,300	1,300
Animal Population Control Program - License	288	300	300
Brain Injury Research Fund	---	3,600	3,600
Certificate of Need Program	1,311	537	537
Clinical Laboratory Improvement Services	332	350	330
Community Partnership for CDSM	---	16	---
Early Intervention Program (EIP) Copays	4,344	3,500	3,500
Electronic Death Registration Support Fund	15	600	600
Emergency Medical Services	---	79	79
Emergency Medical Technician Training Fund	107	1,800	1,800
Estrogen, Diet, Genetics and Endometrial Cancer	30	110	110
Evaluation of California Initiatives to Reduce Violence in Health Care Setting	67	---	105
First Response EMT Cardiac Training Program	---	125	125
Health Care Cost Reduction Fund	23,965	45,237	32,599
Health Care Planning	12,441	7,200	7,200
Intergovernmental Transfer Program (IGT) Payments	33,925	---	---
Live Long Live Well	145	150	150
Managed Care Oversight	100	---	---
Medical Emergency Disaster Preparedness for Bioterrorism	---	7,500	4,722
NJ - AIDS Services Fund	17	---	---
NJ Emergency Medical Services Helicopter Response Program	---	1,894	2,764
NJ Prostate Cancer Research Fund	21	---	---
NJ Turnpike Authority / Garden State Parkway Inspections	96	---	228
Newborn Screening, Follow-up and Treatment	---	3,300	3,306
Office of the Public Guardian	265	600	600
Organ and Tissue Awareness Program	65	---	---
Ovarian Cancer Study	7	---	82
Rabies Control Program	473	475	465
Women, Infants, and Children (WIC) Rebates	21,711	24,000	24,000
Worker and Community Right to Know	---	763	---
Miscellaneous	6,690	9,529	9,443
	<u>121,176</u>	<u>120,965</u>	<u>120,545</u>
Department of Human Services:			
Administration and Support Services	47,657	27,521	30,613
Adopt U.S. Kids	54	---	---
Alcohol Education Rehabilitation and Enforcement Fund	1,657	1,701	1,750
Alcohol Treatment Fund Program	4,500	6,000	6,000
Catastrophic Illness in Children Relief Fund	1,125	925	925
Children's Trust Fund	265	519	519
Client Co-Payments-Developmental Disabilities	33,919	38,630	38,630
Criminal History Record Checks	268	120	120
Domestic Violence Victims Fund	523	---	---
Drug Enforcement Demand Reduction Fund	---	350	350
Food Stamp Enhanced Funding	14,453	---	---
Legally Responsible Relatives-Probation-Supplement	2,791	2,054	2,054
Management and Administrative Services	---	475	475
Mental Health Contract Fees	281	316	316

REVENUES & EXPENDITURES

SCHEDULE 2 OTHER REVENUES (thousands of dollars)

	-----Fiscal Year Ending June 30-----		
	2004	2005	2006
	Actual	Estimated	Estimated
NJ KidCare	45,149	49,851	56,911
New Jersey Health Care Hospital Payments	466,072	525,293	520,476
Old Age Survivors Insurance	1,089	1,492	1,492
Olmstead Grant	20	---	---
Parents Association Vehicle Purchase	49	---	---
Partnership for a Drug Free New Jersey	---	700	700
Personal Needs Allowance	---	600	600
SSA Reimbursement to Enhance the Vocational Rehabilitation	583	300	300
Traumatic Brain Injury	3,596	---	---
Universal Services Fund	1,564	---	---
Work First New Jersey - Work Activities	---	---	10,000
Work First New Jersey Technology Investment - Child Support Incentives	---	---	12,502
Miscellaneous	486	---	---
	626,101	656,847	684,733
Department of Labor and Workforce Development:			
Division of Workers Compensation Uninsured Employers	974	---	---
Enforcement of Workplace Standards - Receipts	---	4,218	4,253
Health Care Tax Collection	5,380	5,700	5,700
Private Disability Insurance Plan	---	1,000	1,000
Public Works Contractor Registration	---	1,925	1,980
Reimbursement to Unemployment Insurance for Joint Tax Functions	---	2,600	2,700
Special Compensation Fund	155,642	126,400	126,530
State Disability Insurance Plan	---	3,750	3,850
State School Construction	2,788	---	---
Urban Enterprise Zones - Employer Rebate Awards	80	---	---
Work First New Jersey Work Activities	---	25,500	25,500
Workers' Compensation	---	6,300	6,700
Workforce Development Partnership - Counselors	---	740	770
Workforce Development Partnership Program	---	1,330	1,384
Workforce Literacy and Basic Skills Program	---	265	276
Miscellaneous	34	30	---
	164,898	179,758	180,643
Department of Law and Public Safety:			
Atlantic County Detention Center	1,739	1,962	1,962
Backstretch Benevolence	199	210	210
Body Armor Replacement Fund - Administrative Costs	75	75	75
Charity Racing Day for the Developmentally Disabled	120	---	---
Claims - Victims of Crime	---	3,870	3,870
Commercial Vehicle Enforcement Program	---	8,500	8,500
Commissions Award Program	2,323	2,500	2,500
Consumer Affairs	113	---	---
Consumer Affairs Charitable Registrations Program	---	670	670
Consumer Affairs Weights and Measures Program	---	900	900
Controlled Dangerous Substance Registration Program	---	650	650
Criminal Disposition and Revenue Collection Fund	---	375	375
Criminal Justice Cost Recovery	---	243	243
D.O.T./State Police Construction Detail	---	6,353	6,353
Division of Consumer Affairs-Appropriated Receipts	---	4,720	4,720
Election Law Enforcement	---	300	300
FBI Mitochondrial DNA Testing	---	810	810
Fines Account - Miscellaneous Settlements	81	---	---
Forfeiture Program	2,758	2,255	2,255
Insurance Fraud Operations	29,771	30,771	29,771
Investigative Unit	502	650	650
Law Enforcement Officers Training and Equipment Fund	762	---	---
Medical Examiner Services	6,775	8,624	8,624
Motorcycle Safety Education Fund	586	---	---
New Jersey Emergency Medical Service Helicopter Program	---	5,495	5,495
New Jersey Expressway Authority	5,053	6,432	6,432
New Jersey Parkway Authority	21,986	26,047	26,047
New Jersey Turnpike Authority	23,887	24,842	24,842
Noncriminal Records Checks	---	11,879	11,879
Northeast Hazardous Waste Project-RCRA	155	274	274
Office of Counter-Terrorism	---	7,200	7,200
Pari-Mutuel Racing in Accordance with N.J.S.A. 5:5-37	609	738	738

REVENUES & EXPENDITURES

SCHEDULE 2 OTHER REVENUES (thousands of dollars)

	-----Fiscal Year Ending June 30-----		
	2004	2005	2006
	Actual	Estimated	Estimated
Pre-Race Blood Testing and Chemical Testing Program	2,564	3,317	3,317
Private Employment Agencies	---	420	420
Racing Officials	1,026	1,193	1,193
Regulation of Alcoholic Beverages	---	4,804	4,804
Regulation of Racing Activities	3,143	3,694	3,694
Retired Officers Handgun Permits	---	140	140
Safe and Secure Neighborhoods Program	7,423	7,100	7,100
Securities Enforcement Fund	---	5,920	5,920
Sexual Assault Nurse Examiner Program	44	---	---
State Athletic Control	414	500	500
State Facilities Education Act	28,692	36,013	36,013
State Forensic Laboratory Fund Program	977	800	800
State Police Central Lab Operations	---	934	934
State Police DNA Laboratory Enhancement	2,871	8,200	8,200
State Police Equine Lab Unit	---	1,362	1,362
State Police Recruit Training	---	77	77
State Police-Private Detective Receipts	---	230	230
State Veterinarians--New Jersey Racing Commission	704	686	686
Vehicle Rental Surcharge State Police Salaries	---	1,900	13,855
Victim and Witness Advocacy Fund	---	1,344	1,344
Miscellaneous	1,777	2,316	2,316
	<u>147,129</u>	<u>238,295</u>	<u>249,250</u>
Department of Military and Veterans' Affairs:			
Burial Services	---	595	595
Distance Learning Center	9	15	15
New Jersey National Guard Support Services	---	1,100	1,100
Transitional Housing	---	550	550
Miscellaneous	220	25	25
	<u>229</u>	<u>2,285</u>	<u>2,285</u>
Department of Personnel:			
Human Resource Development Institute	---	1,700	2,000
Shared Services Agriculture	---	245	245
Shared Services Center - State Parole Board/Motor Vehicle Commission	---	1,912	1,912
Shared Services Pilot Program	---	1,236	1,236
State and Local Government Operations	---	1,500	1,300
	<u>---</u>	<u>6,593</u>	<u>6,693</u>
Department of State:			
CableVision Rental	188	---	---
Crossroads of American History- Historical Commission of Montville and Kean	113	---	---
Extraordinary Programming	368	400	400
Law Enforcement Officers Memorial Fund	468	325	325
Leasing of Space on Transmitter Towers	944	980	980
Lila Wallace Readers Digest Fund	---	300	300
New Jersey College Loans to Assist State Students (NJCLASS)	5,100	5,775	6,369
New Jersey Workforce Development Coalition Initiative	593	1,250	1,250
Preservation Records Grants	---	28,000	28,000
Primary Care Physician/Dentist Loan Redemption Program	1,000	1,000	1,000
Public Broadcasting Services	7,539	6,841	6,841
Records Management	---	1,472	2,300
Rental of Studio and Production Facilities	1,695	1,664	1,664
Sale or Rental of NJN Productions	105	1,211	1,211
TV Food Network/Time Warner Capital Project	1,050	1,200	1,200
War Memorial	595	527	527
Miscellaneous	678	330	330
	<u>20,436</u>	<u>51,275</u>	<u>52,697</u>
Department of Transportation:			
Airport Safety Fund	---	876	876
Applications and Highway Permits	---	1,050	1,050
Board of New Jersey Pilot Commissioners	284	270	270
Commercial Vehicle Enforcement Program	19,811	8,127	8,145
Cost of "Cause" Plates	374	---	---
County and Other Shared Projects	25,258	---	---

REVENUES & EXPENDITURES

SCHEDULE 2 OTHER REVENUES (thousands of dollars)

	-----Fiscal Year Ending June 30-----		
	2004	2005	2006
	Actual	Estimated	Estimated
Greenwood Lake Airport	107	---	---
Highway Safety Fund	446	---	---
In-Terminal School Bus Inspection Program	1,215	1,228	1,232
Inspection Fund Fees	---	28,922	28,957
Logo Sign Program	---	140	140
Maritime Industry Fund	1,916	---	---
Motor Vehicle Services	199,606	196,426	197,716
Motorbus Regulation	742	778	780
NJ Medical Service Helicopter Response Act	7,193	---	---
New Jersey Motor Vehicle Commission New Revenues	54,698	4,111	4,085
Office of Maritime Resources	---	2,375	2,500
Outdoor Advertising Program	---	880	880
Parking Offenses	---	153	153
Placarded Railcar Program	---	76	80
Rental Receipts, Tenant Relocation Program	---	350	350
Sale of DMV Database Items	---	18,629	18,704
Salvage Titles	---	411	411
Security Responsibility	13,668	14,683	14,700
Special Plates	---	378	380
Uninsured Motorist	---	2,001	2,001
	325,318	281,864	283,410
Department of the Treasury:			
Administration of State Lottery	---	260	260
Annual Licensing Fee - Office of Administrative Law Publications	867	860	586
Board of Public Utilities Fines, Penalties and Settlements	---	3,000	---
Business Services Bureau	---	560	560
Capital City Redevelopment Corporation	111	378	378
Clean Energy Program	2,015	820	820
Confiscations from the Cigarette Tax Act	---	20	20
Division of Developmental Disabilities Community Placement and Services	24,994	24,994	24,994
Domestic Security	22,492	---	---
Economic Recovery Fund	17,607	17,605	17,606
Energy Tax Receipts	762,700	787,739	788,492
Federal Recoveries	---	8,700	8,700
Governor's Council on Alcoholism and Drug Abuse	14,733	14,700	14,700
Judicial Hearings Receipts	1,803	2,305	3,667
Management of DEP Properties	---	562	579
New Jersey Commerce, Economic Growth and Tourism Commission	1,850	---	---
New Jersey Geographic Information Network (NJGIN) Property Investigator	15	---	---
New Jersey Public Records Preservation	67,455	---	---
Office of Information Technology-Availability and Recovery Site (OARS)	---	7,182	1,400
Office of Management and Budget	22,134	250	250
Other Capital Building Services	2,410	2,327	2,327
Other Distributed Taxes	3,363	3,363	3,363
Property Management and Construction - Property Management Services	312	310	310
Public Finance Activities	---	700	700
Purchasing and Inventory Management	---	90	90
Real Property Leasing Out Program	---	645	664
Residential Warranty Corporation	105	158	158
Royalties - Office of Administrative Law Publications	164	67	40
Small Business Registration	---	500	500
Taxation Compliance and Enforcement Activities	---	3,539	3,539
Third Party Subrogation - Property Damage	---	500	500
Unclaimed Property Trust Fund	5,578	6,162	6,431
Urban Enterprise Zone (UEZ) Authority Administrative Expenses	2,543	2,754	2,919
Vendor Surcharge Collection - Motor Vehicle Commission	12,100	11,600	12,000
Miscellaneous	999	309	309
	966,350	902,959	896,862
Interdepartmental Accounts--			
Interdepartmental Accounts:			
Statewide Security Projects	---	3,000	---

REVENUES & EXPENDITURES

SCHEDULE 2 OTHER REVENUES (thousands of dollars)

	Fiscal Year Ending June 30		
	2004 Actual	2005 Estimated	2006 Estimated
Judicial Branch—			
The Judiciary:			
Automated Traffic System for Municipal Courts	10,220	9,551	23,100
Civil Courts	499	462	540
Comprehensive Enforcement Program	2,579	2,004	2,300
Court Adult Probation System	486	500	500
Court Technology Improvement Fund	12,711	12,700	12,900
Electronic Access To Court Records	1,877	408	408
Family Courts	407	400	400
Information Services	272	304	516
JAIBG – Juvenile Assessment	41	—	—
JAIBG Essex– Substance Abuse Evaluator Program	8	—	—
JAIBG School Probation	9	—	—
Juvenile Accountability Incentive Block Grant (JAIBG)	24	—	—
Mercer Welfare Fraud Grant	—	54	—
Middlesex Courthouse Artwork	5	—	—
Monmouth Juvenile Accountability Incentive Block Grant	65	—	—
Special Civil Part Certified Mailers	1,571	1,340	1,450
State Incentive Program	39	—	—
State Incentive Program – Juvenile Justice Commission	409	—	—
Supreme Court	10,792	12,025	13,665
Miscellaneous	805	13	13
	<u>42,819</u>	<u>39,761</u>	<u>55,792</u>
<i>Total Dedicated</i>	<u>2,549,578</u>	<u>2,690,908</u>	<u>2,772,432</u>

Federal:

Executive Branch—			
Department of Agriculture:			
Child Care Food	42,394	48,000	52,320
Child Nutrition – School Breakfast	23,316	30,000	36,000
Child Nutrition – School Lunch	136,610	154,356	162,595
Child Nutrition – Special Milk	812	1,400	1,500
Child Nutrition – Summer Programs	6,214	9,247	10,017
Child Nutrition Administration	2,639	3,555	3,677
Cooperative Gypsy Moth Suppression	69	235	75
Farm Risk Management Education Program	93	307	301
Farmland Preservation	149	6,000	10,200
Federal Organic Certification Cost Share Program	35	—	10
Fish Inspection Service	158	160	320
Jobs Bill – Temporary Emergency Food Assistance Program (TEFAP)	1,079	1,434	1,278
Team Nutrition Training	136	225	225
Various Federal Programs and Accruals	3,894	1,070	2,545
	<u>217,598</u>	<u>255,989</u>	<u>281,063</u>
Department of Community Affairs:			
Community Food and Nutrition Program	3,453	86	86
Community Services Block Grant	18,357	17,699	17,699
Emergency Shelter Grants Program	1,017	1,600	1,600
Fair Housing Initiatives Grant	19	85	85
HUD Disaster Recovery Initiative	700	—	—
Lead–Based Paint Abatement in Low and Moderate Income Housing	—	3,000	3,000
Moderate Rehabilitation Housing Assistance	6,951	11,925	12,595
National Affordable Housing–HOME Investment Partnerships	7,524	8,167	9,073
National Fire Academy Training Program	—	30	30
Section 8 Housing Voucher Program	161,745	173,000	173,200
Shelter Plus Care Program	274	5,950	4,500
Small Cities Block Grant Program	8,013	9,746	9,746
Transitional Housing – Homeless	89	—	—
Weatherization Assistance Program	5,651	5,169	5,169
Various Federal Programs and Accruals	125	155	80
	<u>213,918</u>	<u>236,612</u>	<u>236,863</u>

REVENUES & EXPENDITURES

SCHEDULE 2 OTHER REVENUES (thousands of dollars)

	Fiscal Year Ending June 30		
	2004 Actual	2005 Estimated	2006 Estimated
Department of Corrections:			
Correctional Officer Stress Management Program	196	—	—
Digital Radio Technology and Ruggedized Personal Computers	—	—	1,100
Prison Rape Elimination Grant	—	151	452
Project In-Side	570	602	602
Serious and Violent Offender Reentry Initiative	—	—	1,000
State Criminal Alien Assistance Program	3,831	4,062	5,000
Various Federal Programs and Accruals	2,912	50	50
	7,509	4,865	8,204
Department of Education:			
21st Century Schools	7,664	21,898	19,898
AIDS Prevention Education	238	217	217
Adult Basic Education – Administration/Discretionary	17,983	—	—
Bilingual and Compensatory Education – Homeless Children and Youth	1,358	1,210	1,210
Byrd Scholarship Program	1,098	1,200	1,200
Character Education Partnership	465	539	539
Class Size Reduction	473	—	—
Drug-Free Schools and Communities – Administration	2,311	2,092	2,092
Drug-Free Schools and Communities – Discretionary	7,996	8,514	8,514
Educational Technology	12,189	13,670	13,670
Even Start Family Literacy Grant – Discretionary	4,424	4,593	4,593
Grants Management	—	2,477	2,477
Improving America's Schools Act–Consolidated Administration	5,299	5,552	5,552
Individuals with Disabilities Education Act–Basic State Grant	277,307	320,056	334,650
Individuals with Disabilities Education Act–Preschool Grants	11,336	11,642	11,642
Language Acquisition State Grants	12,759	15,869	19,879
Mathematics and Science Partnerships Grants	7	2,504	2,504
Migrant Education – Administration/Discretionary	2,162	2,117	2,117
Public Charter Schools	1,613	4,017	4,017
Refugee Children School Impact Program	737	618	618
School Renovation Grants	9,304	—	—
State Assessments	8,949	9,671	9,671
State Grants for Improving Teacher Quality	62,926	70,469	70,469
State Improvement Grant, Administration	859	1,273	1,273
Title I – Accountability Grants	177	—	—
Title I – Comprehensive School Reform	7,225	7,350	5,832
Title I – Grants to Local Educational Agencies	263,448	265,175	272,775
Title I – Part D, Neglected and Delinquent	2,193	2,340	2,382
Title I – Reading First State Grant	15,684	18,115	19,705
Title II – Math/Science Training, Exemplary	351	—	—
Title V – Innovative Program Strategies	11,009	8,141	6,041
Vocational Education – Basic Grants, Administration	23,677	24,519	24,431
Vocational Education Technical Preparation	2,517	2,263	2,263
Various Federal Programs and Accruals	-49	988	988
	775,689	829,089	851,219
Department of Environmental Protection:			
Air Pollution Maintenance Program	—	5,293	5,218
Americorps	—	300	300
Artificial Reef Program–PSE&G/NJPDES Permit Fees	729	1,125	825
Asian Longhorned Beetle Project	206	100	800
Atlantic Coastal Cooperative Program	68	150	200
Boat Access (Fish and Wildlife)	—	1,000	1,000
Brownfields	—	5,000	2,000
Cape May Peninsula Project (Sandritter Property)	107	300	1,000
Cheesequake Marshland Acquisition	—	1,000	1,000
Clean Lakes Program	—	500	500
Clean Vessels	128	1,000	1,000
Coastal Estuarine Land Program	—	6,000	6,000
Coastal Zone Management Implementation	3,364	2,763	2,431
Communication of Fish Advisories	13,613	—	—
Community Assistance Program	165	200	200
Community and Public Water Supply Operators – Expense Reimbursement	124	1,500	—
Comprehensive Wildfire Conservation Plan Coordination Federal Share	—	32	—
Consolidated Forest Management	1,554	1,374	1,070
Construction Grants Program	—	57,600	57,600

REVENUES & EXPENDITURES

SCHEDULE 2 OTHER REVENUES (thousands of dollars)

	-----Fiscal Year Ending June 30-----		
	2004	2005	2006
	Actual	Estimated	Estimated
Construction Grants Program	---	57,600	57,600
County-wide Wildfire Defense	10	50	---
Defensible Space	46	350	400
Delaware Bay	---	1,000	---
Delaware Bay and Great Egg Harbor Corridor Project (SV Farming) Federal Share	---	---	1,000
Domestic Preparedness DEP- Supplemental Training	---	---	80
Endangered Species	43	75	205
Endangered and Nongame Species Program State Wildlife Grants	565	1,200	1,500
Environmental Justice	---	100	100
Estuary Program	1,179	---	---
Firewise in the Pines	---	200	200
Fish and Wildlife Health	58	190	100
Forest Legacy	---	10,040	10,040
Forest Resource Management-Cooperative Forest Fire Control	2,264	1,725	1,725
Grassland Habitat Project	---	200	200
Hazardous Waste - Resource Conservation Recovery Act	---	4,281	4,281
Historic Preservation Survey & Planning	675	647	650
Hunters' and Anglers' License Fund	3,497	6,365	5,925
Intermodal Surface Transportation Efficiency Act	1,000	10,320	10,320
Investigation and Management of NJ's Nongame Freshwater Fisheries Resources	14	150	150
Land and Water Conservation Fund	---	5,000	5,000
Lower Cohansey Watershed	---	1,000	1,000
Marine Fisheries Investigation and Management	1,280	1,150	1,150
Multi-Media	120	750	750
Multi-Media Enforcement Grant	---	1,000	1,000
NJ Field Office Bog Turtle Cooperative Agreement	---	50	50
NJ Landowners Incentive	43	1,450	1,450
National Coastal Wetlands Conservation	391	2,215	2,215
National Dam Safety Program (FEMA)	253	90	90
National Geologic Mapping Program	150	200	200
National Pollutant Discharge Elimination System Implementation Support Program	---	600	600
National Recreational Trails	582	1,500	1,500
New Jersey Commercial Blue Crab Fishery Economic Assistance Federal Share	---	230	---
Non-Point Source Implementation (319H)	---	4,193	3,851
Particulate Monitoring Grant	349	1,500	1,499
Pennsauken Boat Access Renovation	248	---	---
Pesticide Recording Program	60	20	20
Pesticide Technology	160	780	670
Pinelands Grant - Acquisition	---	6,000	6,000
Preliminary Assessments/Site Inspections	63	3,000	3,000
Radon Program	---	500	500
Regional Climate and Fire Damage Modeling - Pinelands	---	100	---
Safe Drinking Water Act	31	22,200	22,200
Shortnose Sturgeon Research	---	150	150
Southern New Jersey Drinking Water Sampling Project	46	50	50
Southern Pine Beetle	14	100	100
State Wetlands Conservation Plan	65	492	492
State Wildlife Grant Projects	---	1,200	1,500
State/EPA Data Management Grant	432	3,050	2,300
Superfund Grants	25,876	30,450	30,450
Telemetry Study of Red Knots and Atlantic Brant	21	80	65
US Army Corps of Engineers Beachnesters	---	80	80
Underground Storage Tanks	2,049	2,055	2,055
Water Monitoring and Planning	328	1,000	547
Water Pollution Control Program	---	4,250	4,021
Wildland/Urban Interface II	---	250	500
Wildlife Education	118	285	285
Wildlife Management Area Planning	14	300	300
Various Federal Programs and Accruals	960	2,060	2,670
	<u>63,062</u>	<u>221,510</u>	<u>216,330</u>
Department of Health and Senior Services:			
AIDS Incarcerated Individuals in Corrections	949	900	900
Abstinence Education - Family Health Services (FHS)	969	1,122	1,122
Asthma Surveillance and Coalition Building	213	356	356
Asthma and Hazardous Substances Applied Research	131	100	108
Behavioral Risk Factor Surveillance Survey	151	261	261

REVENUES & EXPENDITURES

SCHEDULE 2 OTHER REVENUES (thousands of dollars)

	-----Fiscal Year Ending June 30-----		
	2004 Actual	2005 Estimated	2006 Estimated
Bioterrorism Hospital Emergency Preparedness	490	14,000	14,000
Birth Defects Surveillance Program	---	250	250
Blood Borne Pathogen Exposure Study	---	253	---
Center For Birth Defects Research & Prevention	313	1,600	1,600
Childhood Lead Poisoning	727	1,426	1,400
Chronic Disease Prevention and Health Promotion - Family Health Services	1,291	1,011	1,011
Chronic Disease Prevention and Health Promotion Programs - Public Health	---	1,246	1,525
Clinical Laboratory Improvement Amendments Program	450	497	526
Comprehensive AIDS Resources Grant	54,460	50,850	50,400
Comprehensive Breast and Cervical Cancer	3	---	---
Comprehensive State Based Tobacco Use Prevention Programs	134	---	---
Demonstration Program to Conduct Health Assessments	407	578	634
Early Hearing Detection and Intervention (EHDI) Tracking, Research	131	334	334
Early Intervention for Infants & Toddlers with Disabilities (Part H)	10,798	13,000	13,000
Electronic Benefits Transfer (EBT) Infrastructure (EDS) Special Grant	41	---	---
Eliminating Disparities in Perinatal Health	400	3,430	3,430
Emergency Preparedness For Bioterrorism	20,640	21,898	18,800
Evaluation of Lead Dust Study	47	---	---
Evaluation of the Performance of Integrated HIV/AIDS Surveillance	169	116	116
Exposure - Tremolite Asbestos - Vermiculite	179	220	220
Family Planning Program-Title X	3,549	8,640	8,640
Federal Lead Abatement Program	123	420	461
Federal Medicare Reimbursement	---	994	994
Federal Medicare Relief	---	90,000	90,000
Food Inspection	331	350	387
HIV/AIDS Prevention and Education Grant	16,574	18,000	18,000
HIV/AIDS Surveillance Grant	4,859	7,214	4,812
Housing Opportunities For Persons With AIDS	668	8,163	8,167
Housing Opportunities for Incarcerated Persons with AIDS	---	900	900
Immunization Project	7,081	7,866	8,810
Job & Growth Tax Stimulus	143,065	---	---
Lead Training & Certification (Enforcement) Program	72	82	85
Lyme Disease Research	270	---	---
Maternal and Child Health (MCH) Early Childhood Comprehensive System	70	100	100
Maternal and Child Health Block Grant	13,033	13,000	13,000
Medicare/Medicaid Inspections of Nursing Facilities	9,167	14,150	16,660
Memorandum of Agreement with Emory University-National Down Syndrome Study	---	150	150
Minority AIDS Demo	68	150	150
Morbidity & Mortality Review Program	105	150	150
NJ Ease For Caregivers - Building Support Systems	266	250	250
National Cancer Prevention and Control-Public Health	3,818	6,210	6,574
National Family Caregiver Program	4,720	4,100	4,800
National Violent Death Reporting System	---	---	208
Nurse Aide Certification Program	---	1,958	1,000
Nursing Facilities Transition Grant	---	600	600
Older Americans Act - Title III	29,623	33,248	33,450
Pediatric AIDS Health Care Demonstration Project	2,653	2,850	2,850
Pregnancy Risk Assessment Monitoring System	12	750	750
Preparedness and Response for Bioterrorism	370	---	---
Preventative Health and Health Services Block Grant	3,601	3,896	3,975
Public Employees Occupational Safety & Health - State Plan	---	---	900
Public Health Laboratory Biomonitoring Planning	137	210	210
Rape Prevention and Education Program	2,398	1,237	1,237
Research on Ecology of Lyme Disease in US	150	300	325
Senior Farmers Market Nutrition Program	464	1,000	1,000
State Pharmacy Assistance Program Payments - Federally Funded Grant	---	11,366	11,366
State Regulation on Immunization Rates of Older Adults	-4	---	---
Supplemental Food Program-Women, Infants, and Children	89,473	90,000	94,000
Surveillance, Epidemiology and End Results (SEER)	668	1,200	1,800
Tools For School Implementation Project	-11	80	---
Traumatic Brain Injury Surveillance	---	105	105
Tuberculosis Control Program	5,075	6,069	6,000
United States Department of Agriculture (USDA) Older Americans Act - Title III	3,347	3,900	3,900
Universal Newborn Hearing Screening	219	250	250
Venereal Disease Project	3,268	3,800	3,882
Violence Related Injury Prevention	---	160	160
Viral Hepatitis Integration Study	---	365	---
Vital Statistics Component	549	850	850

REVENUES & EXPENDITURES

SCHEDULE 2 OTHER REVENUES (thousands of dollars)

	-----Fiscal Year Ending June 30-----		
	2004	2005	2006
	Actual	Estimated	Estimated
WIC Farmer's Market Nutrition Program	810	2,000	2,000
West Nile Virus - Laboratory	---	200	242
West Nile Virus - Public Health	2,182	2,300	2,258
Various Federal Programs and Accruals	-144,705	4,351	4,614
	<u>301,211</u>	<u>467,382</u>	<u>471,015</u>
Department of Human Services:			
Access to Recovery	---	8,000	8,000
Block Grant Mental Health Services	10,872	12,496	12,496
Child Care Block Grant	121,157	108,959	109,778
Child Support Enforcement Program	102,948	142,356	171,237
Community Based Residential Program Grant	633	1,000	1,000
Developmental Disabilities Council	1,454	1,590	1,598
Federal Independent Living	942	1,116	1,116
Food Stamp Program	72,789	88,047	96,476
Foster Grandparents Program	1,149	1,051	1,080
Low Income Energy Assistance Block Grant	80,095	75,770	75,951
Projects for Assistance in Transition from Homelessness (PATH)	2,533	1,745	1,745
Refugee Resettlement Program	5,860	5,705	5,705
Restricted Federal Grants	13,818	12,202	12,202
Social Service Block Grant	50,359	51,432	53,308
State Data Infrastructure Project	39	100	100
Substance Abuse Block Grant	56,731	53,385	53,606
Temporary Assistance to Needy Families Block Grant	429,400	500,865	458,888
Title IV-B Child Welfare Services	2,543	6,120	6,120
Title IV-E Foster Care	89,672	111,696	135,580
Title XIX - Child Residential	34,004	74,055	77,983
Title XIX Community Care Waiver	188,373	203,980	228,655
Title XIX ICF/MR	237,878	237,833	278,905
Title XIX Medical Assistance	3,142,947	3,190,529	3,475,298
Title XX Urban Empowerment Zone	1,243	---	---
Title XXI Children's Health Insurance Program	241,934	236,665	221,014
Vocational Rehabilitation Act Section 120	10,682	10,631	10,961
Young Offender Reentry Program	---	490	490
Various Federal Programs and Accruals	148,355	5,869	5,003
	<u>5,048,410</u>	<u>5,143,687</u>	<u>5,504,295</u>
Department of Labor and Workforce Development:			
Adult & Continuing Education - Workforce Investment Act	---	18,222	18,343
Comprehensive Services for Independent Living	119	700	1,012
Current Employment Statistics	2,930	2,591	2,764
Disability Determination Services	50,001	46,020	48,000
Disabled Veterans' Outreach Program	2,244	2,500	2,500
Employment Services	19,882	23,859	22,930
Employment Services - One Stop Shopping	313	325	325
Employment Services Cost Reimbursable Grants - Migrant Housing	100	50	50
Employment Services Grants-Alien Labor Certification	2,583	2,419	2,321
Employment Services Reemployment Services	1,528	1,100	1,100
Federal Public Employees Occupational Safety and Health Act	1,795	1,900	1,900
Local Veterans' Employment Representatives	1,449	1,700	1,700
National Council on Aging - Senior Community Services Employment Project	2,602	3,025	3,000
Occupational Informational Coordinating Program	169	159	159
Occupational Safety Health Act, On-Site Consultation	1,771	2,012	2,002
Occupational Safety and Health Administration Data Collection Survey	75	81	74
Old Age & Survivor Insurance Disability Determination Services	---	1,000	1,000
One Stop Labor Market Information	944	980	940
Redesignated Occupational Safety and Health (ROSH)	233	230	233
Reed Act Funds	8,972	---	---
Rehabilitation of Supplemental Security Income Beneficiaries	654	2,000	2,000
Supported Employment	---	1,200	1,200
Technical Assistance Training	212	1,700	1,700
Technology Related Assistance Project	179	700	350
Trade Adjustment Assistance Project	4,326	7,000	4,000
Unemployment Insurance	112,493	140,900	135,500
Vocational Rehabilitation Act of 1973	31,823	44,650	45,325
Welfare to Work	1,319	---	---
Work Incentive - Project Access	39	700	700

REVENUES & EXPENDITURES

SCHEDULE 2 OTHER REVENUES (thousands of dollars)

	-----Fiscal Year Ending June 30-----		
	2004	2005	2006
	Actual	Estimated	Estimated
Work Opportunity Tax Credit	438	750	750
Workforce Investment Act	73,841	56,830	57,947
Workforce Investment Act - Toll Free Helpline	177	---	---
Workforce Investment Act Title IIID Discretionary Funding	2,957	6,000	4,000
Workforce Investment Act-Title III Dislocated Workers	1,058	19,000	22,000
Various Federal Programs and Accruals	-6,790	145	145
	320,436	390,448	385,970
Department of Law and Public Safety:			
Buffer Zone Protection	---	2,500	1,400
Bulletproof Vest Partnership	77	700	700
Bureau of Justice State Police Communications Grant	8,848	---	---
Casework DNA Backlog Reduction Program	174	1,300	1,300
Challenge Grant	330	300	300
Child Passenger Protection Education	1	500	500
Citizen Corps Program	100	---	---
Combating Underage Drinking	254	360	360
Community Emergency Response Team Program	409	550	550
Community Prosecutors Block Grant	---	1,000	1,000
Computer Aided Dispatch Maintenance	22,970	---	---
Convicted Offender In-House (DNA)	---	1,500	1,500
Cops In Schools	177	1,000	1,000
Criminal Justice Information Services Digitized Mugshot	---	129	129
Criminal Justice Victims of Crime Act 9/11 Attack on America	546	---	---
Declared Counties For New Jersey Power Outage	1,339	---	---
Disaster Relief	2,083	---	---
Domestic Marijuana Eradication Suppression Program	177	200	200
Domestic Preparedness Equipment Grant	6,765	---	---
Domestic Preparedness Training	6,203	---	---
Drunk Driver Prevention	79	---	---
Edward Byrne Memorial Grant	12,365	---	---
Emergency Management Performance Grant - Non Terrorism	2,829	4,500	4,500
Emergency Operations Center - Phase I Risk Assessment	50	---	---
Equal Employment Opportunity Commission	592	600	600
FEMA Pre-Disaster Mitigation Grant	---	300	300
Financial Investigations & Money Laundering Initiative	---	5,000	5,000
Flood Mitigation Assistance	52	946	946
Forensic Crime Laboratory Improvement Program	---	2,000	2,000
Forensic DNA Testing Program	---	1,000	1,000
Hazardous Materials Transportation	---	350	350
Help America Vote Act	---	42,000	1,040
High Intensity Drug Trafficking Area (HIDTA)	---	50	50
Highway Safety Data Improvement Grant	---	1,500	1,500
Highway Safety Programs	4,291	4,550	5,275
Incident Command	141	750	750
Innovative Seat Belt Use	---	2,500	2,500
Internet Crimes Against Children	12	300	300
Justice Assistance Grant (JAG)	---	9,000	9,000
Juvenile Accountability Incentive Block Grant	4,543	5,900	1,200
Juvenile Justice Delinquency Prevention	2,863	2,457	2,476
Law Enforcement Training Academy	490	---	---
Local Law Enforcement Block Grant	1,024	1,400	1,400
Marine Police Boat	251	---	---
Medicaid Fraud Unit	1,830	3,000	3,000
National Criminal History Program-OAG	2,320	2,000	2,000
National Forensic Sciences Improvement Act Program	96	110	110
New Jersey Anti-Money Laundering Initiative	---	750	750
Northeast Hazardous Waste Project-RCRA	309	250	250
Occupant Protection Grant	614	1,500	1,750
Protecting Our Urban Areas	---	19,300	19,300
Public Safety Wireless Coordination Council - Initiative	---	244	244
Recreational Boating Safety	2,275	2,000	2,000
Residential Treatment for Substance Abuse	1,219	1,600	1,600
Safety Incentive Grants	4,252	5,000	5,000
Section 163 Prevent Operations of Motor Vehicles By Intoxicated Persons	---	3,000	3,000
State Homeland Security Grant Program	---	36,600	36,600
State Police In-Car Camera Technology Grant	8	200	200

REVENUES & EXPENDITURES

SCHEDULE 2 OTHER REVENUES (thousands of dollars)

	-----Fiscal Year Ending June 30-----		
	2004	2005	2006
	Actual	Estimated	Estimated
State and Local All Hazards Emergency Operation Planning	2,158	---	---
Title V Funding	1,235	1,500	1,500
Truth In Sentencing Incentive Grant	36,260	---	---
Unemployment Fraud	---	643	643
Victim Assistance Grants	8,844	12,000	12,000
Victim Compensation Award	2,283	7,000	7,000
Victims of Crime Act Compensation for 9/11 Attack	2,007	---	---
Violence Against Women Act	2,790	4,000	4,000
Various Federal Programs and Accruals	-16,884	1,295	1,515
	<u>131,651</u>	<u>197,134</u>	<u>151,588</u>
Department of Military and Veterans' Affairs:			
Armory Renovations and Improvements	776	1,500	1,500
Army Facilities Service Contracts	2,002	1,400	1,400
Army National Guard Statewide Security Agreement	558	500	500
Army National Guard Transportation	---	125	125
Army Training and Technology Lab	453	500	500
Atlantic City Air Base - Service Contracts	2,193	2,200	2,200
Atlantic City Environmental	90	50	50
Atlantic City Operations and Maintenance	55	65	65
Brigadier General Doyle Memorial Cemetery Building Project	1,421	6,900	8,500
Design and Construction of the Vineland Memorial Veterans' Home	12,873	---	---
Dining Facility Operations	---	700	700
Facilities Support Contract	4,231	6,000	6,000
Federal Distance Learning Program	189	200	200
Fire Fighter/Crash Rescue Service Cooperative Funding Agreement	1,169	1,350	1,500
Hazardous Waste Environmental Protection Program	415	500	500
McGuire AFB Environmental	94	50	50
McGuire Air Force Base - Service Contracts	1,415	1,995	2,095
McGuire Operations and Maintenance	68	70	70
Medicare Part A Receipts for Resident Care and Operational Costs	3,460	3,870	4,492
National Guard Communications Agreement	807	650	650
New Jersey National Guard Challenge Youth Program	1,637	2,000	2,000
New Jersey National Guard Counter Drug Program Interservice State-Federal	33	12	12
Training and Equipment - Pool Sites	318	250	250
Transitional Housing	371	360	360
Veterans' Education Monitoring	498	565	565
Various Federal Programs and Accruals	1,841	55	55
	<u>36,967</u>	<u>31,867</u>	<u>34,339</u>
Department of State:			
Americorps Grants	---	5,739	5,739
Leveraging Educational Assistance Partnership	3,376	2,148	2,148
NJ GEAR UP	1,900	2,730	2,730
National Endowment for the Arts Partnership	---	750	750
National Health Service Corps - Student Loan Repayment Program	178	240	240
National Telecommunications Information Agency	---	625	625
Student Loan Administrative Cost Deduction and Allowance	16,419	20,344	22,056
Various Federal Programs and Accruals	2,335	202	202
	<u>24,208</u>	<u>32,778</u>	<u>34,490</u>
Department of Transportation:			
Airport Fund	5,096	10,000	10,000
Highway Planning and Research	25,755	15,180	15,180
Metropolitan Planning Funds	15,814	11,015	11,015
Motor Carrier Safety Assistance Program	2,348	9,808	9,808
New Jersey Transportation Planning Assistance	201	---	---
Supportive Services Highway Construction Training Program	---	500	500
	<u>49,214</u>	<u>46,503</u>	<u>46,503</u>
Department of the Treasury:			
Diamond Shamrock Oil Overcharge Settlement	---	617	717
Division of Gas Expansion	---	600	600

REVENUES & EXPENDITURES

SCHEDULE 2 OTHER REVENUES (thousands of dollars)

	-----Fiscal Year Ending June 30-----		
	2004 Actual	2005 Estimated	2006 Estimated
State Energy Conservation Program	685	2,270	2,602
Various Federal Programs and Accruals	2,038	700	700
	2,723	4,187	4,619
Judicial Branch--			
The Judiciary:			
Drug Court Direct	301	200	200
Juvenile Drug Court Grant	440	1,478	---
NJ Child Support Early Intervention Project	---	100	100
Various Federal Programs and Accruals	285	800	835
	1,026	2,578	1,135
<i>Total Federal</i>	7,193,622	7,864,629	8,227,633
Revolving:			
Legislature:			
Various Revolving Funds	17	---	---
Department of Community Affairs:			
Administration and Support Services	464	---	---
Housing Services	---	495	495
Liquid Petroleum Gas Ed. & Safety Board	143	308	360
Uniform Construction Code	8,526	6,800	6,800
Various Revolving Funds	79	---	---
	9,212	7,603	7,655
Department of Corrections:			
Culinary Arts Vocational Program	73	185	186
Farm Operations	10,840	10,318	10,500
Institutional Care and Treatment	474	470	470
State Use	21,897	18,879	18,879
	33,284	29,852	30,035
Department of Education:			
Administration and Support Services	3,582	3,999	3,999
Adult and Continuing Education	311	350	350
Professional Development and Licensure	140	199	199
	4,033	4,548	4,548
Department of Environmental Protection:			
Administration and Support Services	90	135	100
Pesticide Control	246	---	225
Publicly-Funded Site Remediation	51	---	---
	387	135	325
Department of Health and Senior Services:			
Administration and Support Services	5,679	5,497	5,497
Laboratory Services	13,008	9,200	10,530
	18,687	14,697	16,027
Department of Human Services:			
Administration and Support Services	909	861	861
Income Maintenance Management	6,645	7,174	6,825
	7,554	8,035	7,686
Department of Labor and Workforce Development:			
Administration and Support Services	1,181	---	---
Planning and Analysis	143	---	---
	1,324	---	---
Department of Law and Public Safety:			
Criminal Justice	411	300	300
State Police Operations	36	553	553
	447	853	853

REVENUES & EXPENDITURES

SCHEDULE 2 OTHER REVENUES (thousands of dollars)

	-----Fiscal Year Ending June 30-----		
	2004 Actual	2005 Estimated	2006 Estimated
Department of State:			
Records Management	970	1,293	200
Department of Transportation:			
Administration and Support Services	651	---	---
Department of the Treasury:			
Adjudication of Administrative Appeals	897	895	895
Automotive Services	16,711	19,558	19,558
Capitol Post Office	1,564	1,648	1,648
Escrow - Construction Management Services	796	3,000	3,000
Office of Information Technology	104,266	98,178	99,010
Printing Services	1,911	2,324	2,324
Property Management and Construction - Construction Management Services	2,703	3,738	3,738
Public Information Services	1,430	1,293	1,293
Purchasing and Inventory Management	53,678	55,941	55,941
	<u>183,956</u>	<u>186,575</u>	<u>187,407</u>
<i>Total Revolving</i>	<i>260,522</i>	<i>253,591</i>	<i>254,736</i>
Total Other Revenues General Fund	10,003,722	10,809,128	11,254,801

SPECIAL TRANSPORTATION FUND

General:			
County and Other Shared Projects	765	---	---
Transportation Trust Fund - Local Highway Funds	145,876	145,000	150,000
Transportation Trust Fund - Public Transportation Projects	709,839	606,597	534,000
Transportation Trust Fund - State Highway Funds	417,147	541,000	521,000
	<u>1,273,627</u>	<u>1,292,597</u>	<u>1,205,000</u>
Federal:			
Federal Highway Administration	757,430	716,391	888,173
<i>Total Special Transportation Fund</i>	<i>2,031,057</i>	<i>2,008,988</i>	<i>2,088,173</i>
TOTAL OTHER REVENUES	12,034,779	12,818,116	13,342,974

REVENUES & EXPENDITURES

SCHEDULE 3 EXPENDITURES BUDGETED (thousands of dollars)

	-----Fiscal Year Ending June 30-----		
	2004 Actual	2005 Estimated	2006 Estimated
GENERAL FUND			
Legislative Branch			
Senate	11,326	11,644	11,644
General Assembly	18,623	19,155	19,155
Office of Legislative Services	30,969	29,038	29,038
Legislative Commissions	4,966	5,585	6,124
State Capitol Joint Management Commission	8,045	9,001	9,001
Clean Ocean and Shore Trust Committee	144	144	144
	74,073	74,567	75,106
Executive Branch			
Chief Executive	5,141	5,537	4,972
Department of Agriculture	26,873	23,353	22,717
Department of Banking and Insurance	66,696	68,837	67,837
Department of Community Affairs	118,212	209,557	180,852
Department of Corrections	941,961	1,018,645	1,033,444
Department of Education	3,003,930	2,975,455	1,409,544
Department of Environmental Protection	411,940	433,839	338,114
Department of Health and Senior Services	790,595	1,505,154	1,286,284
Department of Human Services	4,603,428	4,751,965	5,114,775
Department of Labor and Workforce Development	131,261	106,890	106,722
Department of Law and Public Safety	568,255	550,755	551,999
Department of Military and Veterans' Affairs	82,021	87,702	86,730
Department of Personnel	30,414	26,307	25,701
Department of State	1,086,462	1,248,019	1,230,250
Department of Transportation	1,104,589	1,189,357	1,175,875
Department of the Treasury	1,237,044	1,329,345	1,067,438
Miscellaneous Commissions	1,404	1,395	1,403
	14,210,226	15,532,112	13,704,657
Interdepartmental Accounts			
Interdepartmental Services	520,328	547,547	549,665
Employee Benefits	1,788,034	1,974,179	2,135,255
Other Interdepartmental Accounts	26,122	159,894	70,646
Salary Increases and Other Benefits	6,941	7,500	115,397
	2,341,425	2,689,120	2,870,963
Judicial Branch			
The Judiciary	518,467	552,326	554,026
	518,467	552,326	554,026
Total General Fund	17,144,191	18,848,125	17,204,752
CASINO CONTROL FUND - DIRECT STATE SERVICES			
Department of Law and Public Safety	37,266	40,599	40,599
Department of the Treasury	28,074	28,686	28,686
Total Casino Control Fund - Direct State Services	65,340	69,285	69,285

REVENUES & EXPENDITURES

SCHEDULE 3 EXPENDITURES BUDGETED (thousands of dollars)

	-----Fiscal Year Ending June 30-----		
	2004 Actual	2005 Estimated	2006 Estimated
CASINO REVENUE FUND			
Department of Health and Senior Services	426,849	358,341	331,583
Department of Human Services	118,636	118,737	118,737
Department of Labor and Workforce Development	2,440	2,440	2,440
Department of Law and Public Safety	93	92	92
Department of Transportation	25,458	25,287	34,352
<i>Total Casino Revenue Fund</i>	<u>573,476</u>	<u>504,897</u>	<u>487,204</u>
GUBERNATORIAL ELECTIONS FUND - GRANTS-IN-AID			
Department of Law and Public Safety	---	8,870	1,025
PROPERTY TAX RELIEF FUND			
Department of Community Affairs	941,195	929,569	921,069
Department of Education	5,285,138	6,104,138	7,976,023
Department of Environmental Protection	10,129	8,500	9,000
Department of the Treasury	983,260	1,927,045	743,908
<i>Total Property Tax Relief Fund</i>	<u>7,219,722</u>	<u>8,969,252</u>	<u>9,650,000</u>
GRAND TOTAL EXPENDITURES BUDGETED	<u>25,002,729</u>	<u>28,400,429</u>	<u>27,412,266</u>

REVENUES & EXPENDITURES

SCHEDULE 4 EXPENDITURES NOT BUDGETED (thousands of dollars)

	-----Fiscal Year Ending June 30-----		
	2004	2005	2006
	Actual	Estimated	Estimated
GENERAL FUNDS			
Dedicated Funds			
Chief Executive	1,172	1,100	1,100
Department of Agriculture	8,899	11,004	12,628
Department of Banking and Insurance	2,053	8,396	7,496
Department of Community Affairs	42,205	83,219	87,993
Department of Corrections	24,466	23,299	23,017
Department of Education	21,526	26,607	28,170
Department of Environmental Protection	22,519	53,681	79,118
Department of Health and Senior Services	127,883	120,965	120,545
Department of Human Services	580,511	656,847	684,733
Department of Labor and Workforce Development	148,068	179,758	180,643
Department of Law and Public Safety	180,065	238,295	249,250
Department of Military and Veterans' Affairs	37	2,285	2,285
Department of Personnel	22	6,593	6,693
Department of State	19,481	51,275	52,697
Department of Transportation	257,017	281,864	283,410
Department of the Treasury	844,562	902,959	896,862
Interdepartmental Accounts	---	3,000	---
The Judiciary	42,086	39,761	55,792
<i>Total Dedicated Funds</i>	<u>2,322,572</u>	<u>2,690,908</u>	<u>2,772,432</u>
Federal Funds			
Department of Agriculture	239,014	255,911	280,985
Department of Community Affairs	274,887	279,428	279,657
Department of Corrections	25,583	6,845	10,265
Department of Education	766,519	824,040	846,117
Department of Environmental Protection	63,571	221,510	216,330
Department of Health and Senior Services	1,625,281	1,470,737	1,615,305
Department of Human Services	3,574,700	3,995,534	4,211,126
Department of Labor and Workforce Development	356,433	415,577	412,289
Department of Law and Public Safety	142,766	201,629	156,154
Department of Military and Veterans' Affairs	24,594	31,867	34,339
Department of Personnel	314	---	---
Department of State	27,699	33,352	35,064
Department of Transportation	53,829	44,003	44,003
Department of the Treasury	3,786	5,638	6,070
The Judiciary	70,014	78,558	79,929
<i>Total Federal Funds</i>	<u>7,248,990</u>	<u>7,864,629</u>	<u>8,227,633</u>
Revolving Funds			
Legislature	17	---	---
Department of Community Affairs	9,975	7,603	7,655
Department of Corrections	33,286	29,852	30,035
Department of Education	4,396	4,548	4,548
Department of Environmental Protection	798	135	325
Department of Health and Senior Services	18,305	14,697	16,027
Department of Human Services	7,052	8,035	7,686
Department of Labor and Workforce Development	1,500	---	---
Department of Law and Public Safety	260	853	853
Department of State	1,317	1,293	200
Department of Transportation	632	---	---
Department of the Treasury	182,222	186,575	187,407
<i>Total Revolving Funds</i>	<u>259,760</u>	<u>253,591</u>	<u>254,736</u>
<i>Total Expenditures General Fund</i>	<u>9,831,322</u>	<u>10,809,128</u>	<u>11,254,801</u>
SPECIAL TRANSPORTATION TRUST FUND			
General	1,877,921	2,008,988	2,088,173
GRAND TOTAL EXPENDITURES NOT BUDGETED	<u>11,709,243</u>	<u>12,818,116</u>	<u>13,342,974</u>

REVENUES & EXPENDITURES

SUMMARY REVENUES, EXPENDITURES AND FUND BALANCES GENERAL STATE FUNDS (thousands of dollars)

	-----Fiscal Year Ending June 30-----		
	2004 Actual	2005 Estimated	2006 Estimated
Beginning Balances July 1			
<i>Undesignated Fund Balances</i>			
General Fund	372,982	376,502	111,584
Surplus Revenue Fund	--	282,416	288,416
Property Tax Relief Fund	--	175,264	--
Gubernatorial Elections Fund	706	1,310	--
Casino Control Fund	4,330	4,888	--
Casino Revenue Fund	--	22,747	--
Total Undesignated Fund Balances	378,018	863,127	400,000
<i>Designated Fund Balances</i>			
General Fund	863,940	1,105,427	1,105,427
Property Tax Relief Fund	--	5,765	5,765
Casino Control Fund	1,945	947	947
Casino Revenue Fund	--	30,840	30,840
Special Transportation Fund	--	--	--
Total Designated Fund Balances	865,885	1,142,979	1,142,979
Total Beginning Balances	1,243,903	2,006,106	1,542,979
Revenues			
<i>General Fund</i>			
State Revenues (Schedule I)	17,374,991	17,688,357	17,204,752
Other Revenues (Schedule II)	10,003,722	10,809,128	11,254,801
Property Tax Relief Fund (Schedule I)	7,400,733	9,055,000	9,650,000
Gubernatorial Elections Fund (Schedule I)	603	1,500	1,500
Casino Control Fund (Schedule I)	64,646	69,585	69,585
Casino Revenue Fund (Schedule I)	595,991	482,150	487,204
Special Transportation Fund (Schedule II)	2,031,057	2,008,988	2,088,173
Total Revenues	37,471,743	40,114,708	40,756,015
Other Adjustments			
<i>General Fund</i>			
Balances lapsed	--	479,533	--
From (To) Casino Revenue Fund	--	--	--
From (To) Property Tax Relief Fund	--	422,189	--
From (To) Gubernatorial Elections Fund	--	(6,060)	--
From (To) Casino Control Fund	--	5,188	--
Reversal of CBT	33,939	--	--
From (To) Surplus Revenue	(282,416)	(6,000)	--
Budget vs GAAP adjustment	21,197	--	--
Miscellaneous	69,087	--	--
<i>Property Tax Relief Fund</i>			
From (To) General Fund	--	(422,189)	--
Balances lapsed	--	161,177	--
Budget vs GAAP adjustment	(5,747)	--	--
Miscellaneous	5,765	--	--
<i>Gubernatorial Elections Fund</i>			
From (To) General Fund	--	6,060	--
Budget vs GAAP adjustment	1	--	--
<i>Casino Control Fund</i>			
From (To) General Fund	--	(5,188)	--
Budget vs GAAP adjustment	1,252	--	--
Miscellaneous	(998)	--	--
<i>Casino Revenue Fund</i>			
From (To) General Fund	--	--	--
Budget vs GAAP adjustment	232	--	--
Miscellaneous	30,840	--	--
<i>Surplus Revenue Fund</i>			
From (To) General Fund	282,416	6,000	--
<i>Special Transportation Fund</i>			
Budget vs GAAP adjustment	(153,136)	--	--
Total Other Adjustments	2,432	640,710	--
Total Available	38,718,078	42,761,524	42,298,994

REVENUES & EXPENDITURES

SUMMARY REVENUES, EXPENDITURES AND FUND BALANCES GENERAL STATE FUNDS (thousands of dollars)

	-----Fiscal Year Ending June 30-----		
	2004 Actual	2005 Estimated	2006 Estimated
Expenditures			
<i>General Fund</i>			
Expenditures Budgeted (Schedule III)	17,144,191	18,848,125	17,204,752
Expenditures Not Budgeted (Schedule IV)	9,831,322	10,809,128	11,254,801
Property Tax Relief Fund (Schedule III)	7,219,722	8,969,252	9,650,000
Gubernatorial Elections Fund (Schedule III)	--	8,870	1,025
Casino Control Fund (Schedule III)	65,340	69,285	69,285
Casino Revenue Fund (Schedule III)	573,476	504,897	487,204
Special Transportation Fund (Schedule IV)	1,877,921	2,008,988	2,088,173
Total Expenditures	36,711,972	41,218,545	40,755,240
Ending Balances June 30			
<i>Undesignated Fund Balances</i>			
General Fund	376,502	111,584	111,584
Surplus Revenue Fund	282,416	288,416	288,416
Property Tax Relief Fund	175,264	--	--
Gubernatorial Elections Fund	1,310	--	475
Casino Control Fund	4,888	--	300
Casino Revenue Fund	22,747	--	--
Total Undesignated Fund Balances	863,127	400,000	400,775
<i>Designated Fund Balances</i>			
General Fund	1,105,427	1,105,427	1,105,427
Property Tax Relief Fund	5,765	5,765	5,765
Casino Control Fund	947	947	947
Casino Revenue Fund	30,840	30,840	30,840
Special Transportation Fund	--	--	--
Total Designated Fund Balances	1,142,979	1,142,979	1,142,979
Total Ending Balances	2,006,106	1,542,979	1,543,754

NOTES

Revenues

FY 2005

(In Millions)

	FY2005 Approp. Act Revenues	FY2005 Adjusted Revenues	Change	
			<u>\$</u>	<u>%</u>
Income	\$ 8,855	\$ 9,055	\$ 200	2.3
Sales	6,600	6,520	(80)	(1.2)
Corporate	2,500	2,162	(338)	(13.5)
Other*	<u>9,646</u>	<u>9,560</u>	<u>(86)</u>	(0.9)
Total	<u>\$ 27,601</u>	<u>\$ 27,297</u>	<u>\$ (304)</u>	(1.1)

* Includes CBT - Energy

Revenues

FY2006

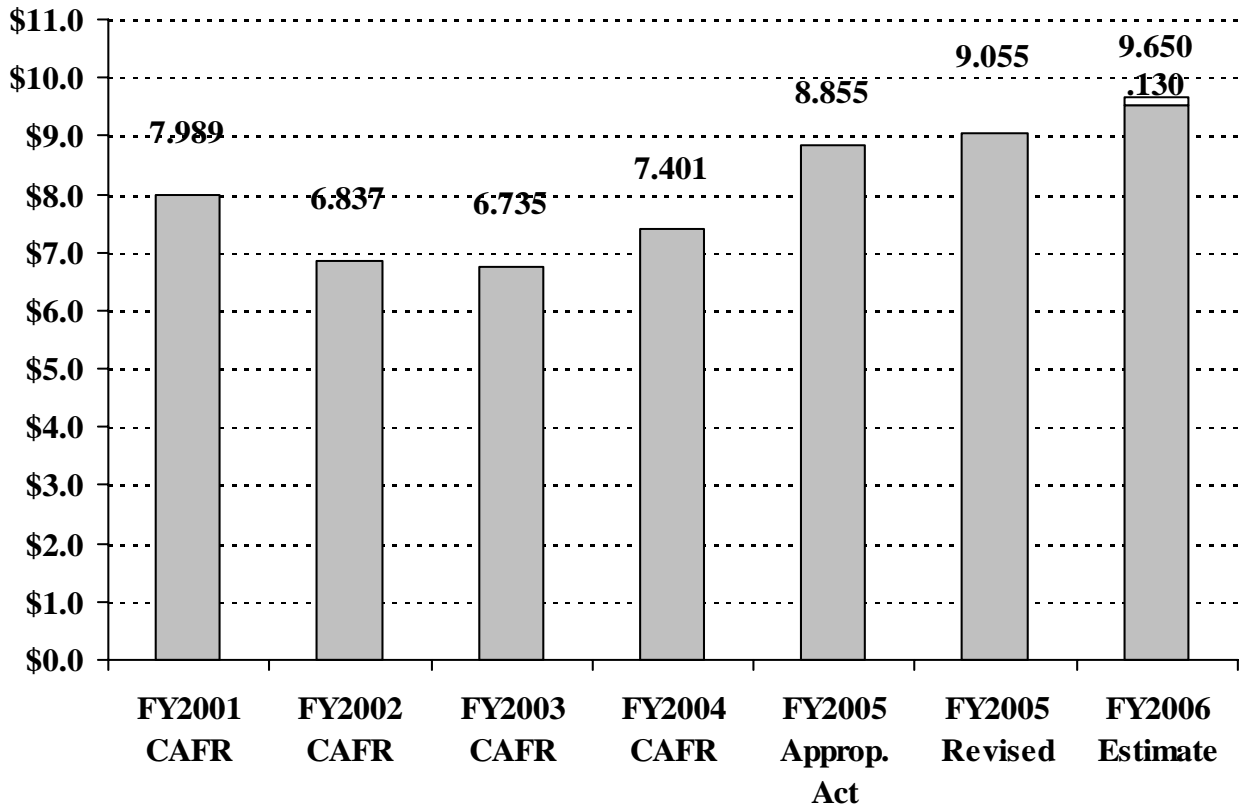
(In Millions)

	FY2005	FY2006	Change	
	Adjusted	Revenues	\$	%
	Revenues	Revenues	\$	%
	<u> </u>	<u> </u>	<u> </u>	<u> </u>
Income				
Base	\$ 9,055	\$ 9,520	\$ 465	5.1
Initiatives		130	130	
Sales				
Base	6,520	6,850	330	5.1
Initiatives		325	325	
Corporate	2,162	2,126	(36)	(1.7)
Other*				
Base	9,560	7,654	(1,906)	(19.9)
Initiatives		808	808	
Total	<u>\$ 27,297</u>	<u>\$ 27,413</u>	<u>\$ 116</u>	0.4

* Includes CBT - Energy

GROSS INCOME TAX

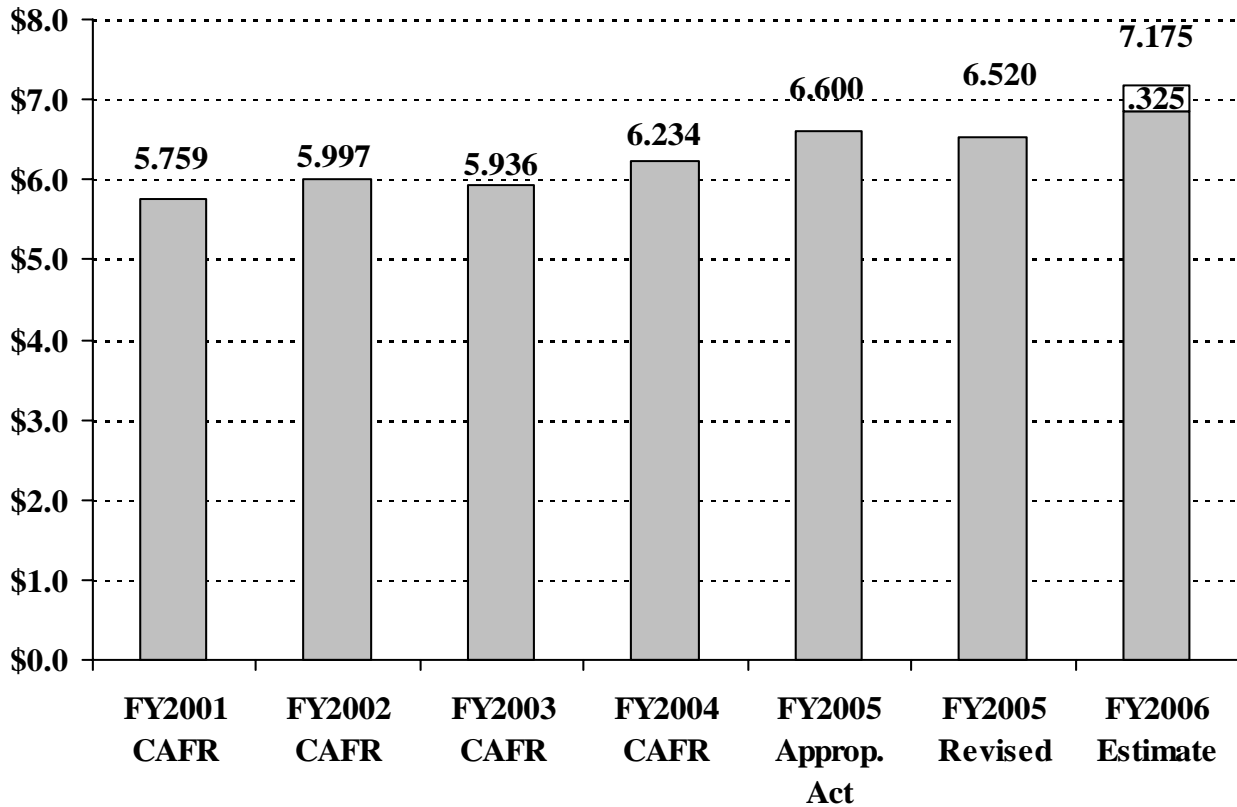
(In Billions)



FY06 includes \$130 million in initiatives.

SALES TAX

(In Billions)

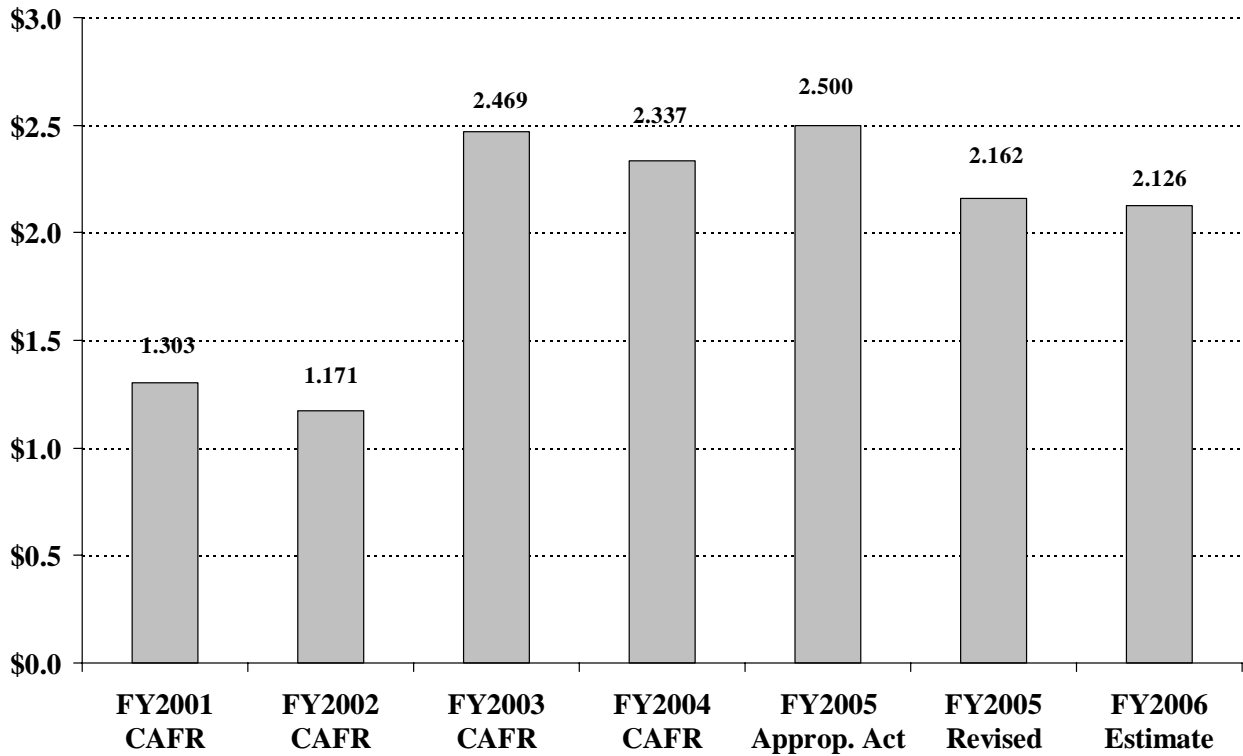


FY06 includes \$325 million in initiatives.

Sales excludes Energy

CORPORATE BUSINESS TAX

(In Billions)



CBT excludes Energy

REVENUES & EXPENDITURES***Nonrecurring Resources Down by 70%***

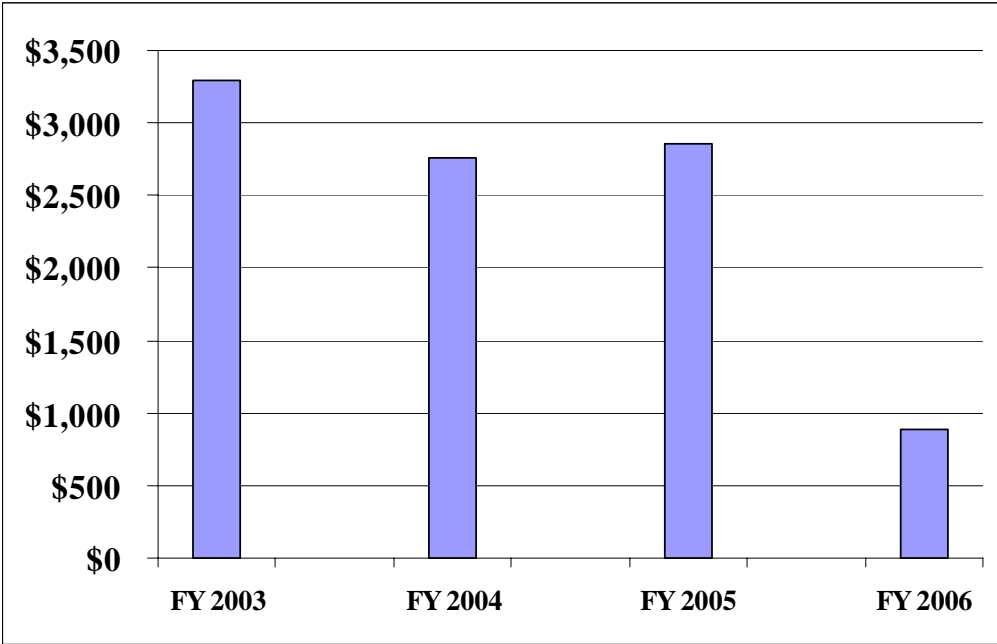
(In Millions)

	<u>FY 2003</u>	<u>FY 2004</u>	<u>FY 2005</u>	<u>FY 2006</u>
Tobacco Securitization	\$1,557	\$1,612	\$-	\$-
Cigarette/MV Surcharge Securitizations	-	-	1,930	-
General Fund Surplus	15	-	463	-
Unemployment Insurance Fund	325	325	100	250
Millionaires' Tax - Retroactive Impact	-	-	156	-
Federal Stimulus	106	433	-	-
PAAD Waiver	147	148	-	-
PAAD Rebate Receivable	-	-	-	50
CBT Revenue	651	-	-	-
HMO Tax	-	-	55	-
Car Registration Acceleration	-	-	16	22
Unclaimed Property	100	-	-	-
State Disability Fund	-	30	110	-
Securities Enforcement Collections	-	10	2	-
Real Estate Guarantee	-	1	-	-
NJ Redevelopment Authority	-	9	-	-
Hotel Revenue-State Share	-	25	-	-
Asset Sales	-	-	-	500
Fines Amnesty	-	-	-	15
AIDS Drug Distribution Program Receivable	-	-	-	6
Miscellaneous Revenue-Human Services	-	-	-	4
Economic Development Authority	-	30	2	2
Toll Road Revenue TTF	22	22	-	-
Catastrophic Illness in Children Relief Fund	-	4	-	-
Drug Enforcement Demand Reduction	4	3	1	2
Educational Facilities Authority	-	-	2	-
Federal TANF Balances	70	86	18	18
VOI/TIS Federal Funds	12	13	-	-
Cash Management Fund	20	-	-	12
Free Public Schools	25	-	-	-
Meadowlands Commission	62	-	-	-
Sanitary Landfill Contingency	6	6	-	-
Second Injury Fund	20	-	-	-
Surplus Lines	43	-	-	-
UMDNJ Self Insurance Fund	77	-	-	-
UEZ Balances	37	-	-	-
Tobacco Settlement Fund	-	-	-	10
Mutual Workers' Compensation Fund	-	-	5	-
Total	<u>\$3,299</u>	<u>\$2,757</u>	<u>\$2,860</u>	<u>\$891</u>

Based on planned revenue actions.

Nonrecurring Resources Down by 70%

(In Millions)



Based on planned revenue actions.

Surplus

(In Millions)

